

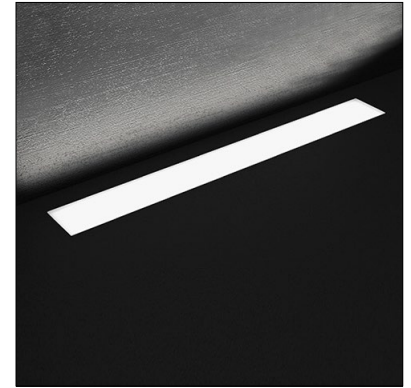
MIN / MAX - LINEA IP68



datasheet

SUITABLE FOR USE IN FOUNTAINS or POOLS

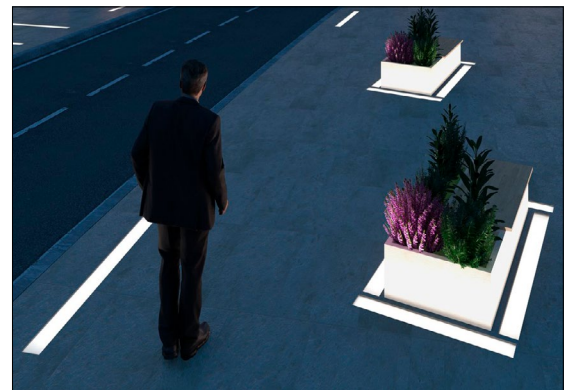
MIN / MAX Linea is a linear, IP68-rated LED luminaire for flush installation in fountains or swimming pools, both indoors or outdoors - submersible to 1 m (3.28'). It is available in 5 different sizes with sandblasted or antislip glass. Pressure switch on request. Can be ordered in aluminum IP67 version for in-grade non-fountain use.



Fixture Dimensions - See page 2

TECHNICAL DATA

Wattage / Input	5W, 10W, 15W, 20W, 25W
Power Supply	Remote, not included. Consult Factory.
Construction	Body: Stainless Steel Lens: Extra Clear Tempered Glass Cable Length: 1.64'
CCT	2700K, 3000K, 4000K (RGBW or Tunable White on request)
BUG Rating	B0-U3-G0
Delivered Lumens	415-2015 lm (3000K)
Efficacy	80- 93 lm/W (3000K)
Optics	Diffuse
Finishes	Sandblasted or Antislip Glass
Fixture Dimensions	9.8", 19.7", 29.5", 39.4", 49.2" x 3.9" w x 1.6" h
Color Consistency	3-Step MacAdam
IP Rating	IP68 - Submersible to 5 m (16.4')
Impact Resistance	IK10
Driveover Capacity	Up to 11,000 lbs



ORDERING INFORMATION

Example: LM07.103930.US.60.DI.BP. Accessories / Power Supplies ordered separately.

<input type="text"/>	<input type="text"/>	<input type="text"/>	<input type="text"/>
Model No.	Finish	Optic	CCT
LM07.103874.US (L1 - 5W)	60 - Sandblasted	DI - Diffuse	BC - 2700K
LM07.103875.US (L2 - 10W)	A1 - Antislip		BP - 3000K
LM07.103876.US (L3 - 15W)			BF - 4000K
LM07.103929.US (L4 - 20W)			
LM07.103930.US (L5 - 25W)			

Job Name/Date:

Fixture Type Designation:

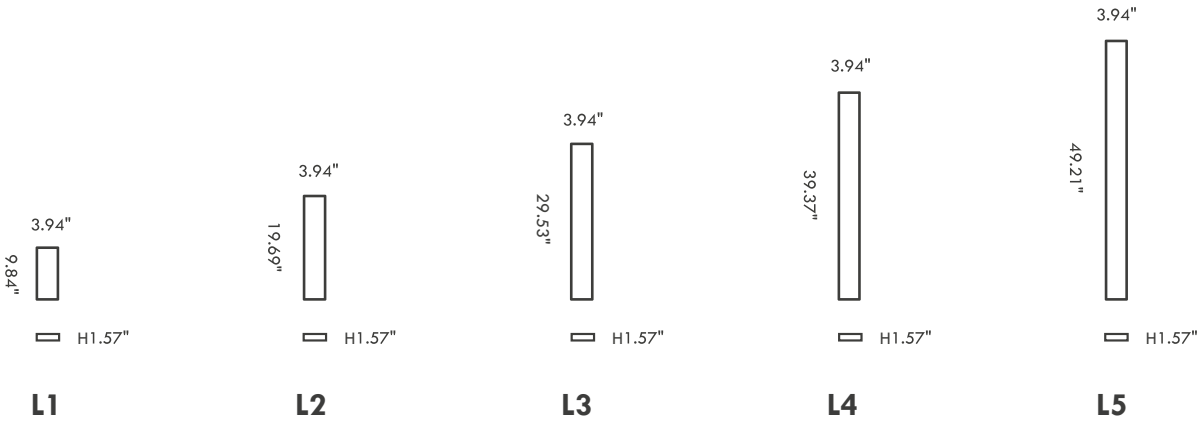
MIN / MAX - LINEA IP68



SUITABLE FOR USE IN FOUNTAINS or POOLS

datasheet

FIXTURE DIMENSIONS



SUGGESTED POWER SUPPLIES

Consult Factory

ACCESSORIES - Installation



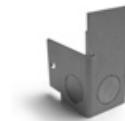
- LM20.104016** (L1 - 4.3" x 10.2" x 3.9" h)
 - LM20.104017** (L2 - 4.3" x 20.0" x 3.9" h)
 - LM20.104018** (L3 - 4.3" x 29.8" x 3.9" h)
 - LM20.104019** (L4 - 4.3" x 39.7" x 3.9" h)
 - LM20.104020** (L5 - 4.3" x 49.5" x 3.9" h)
- IP68 Housing



- LM20.104810**
Light Source Extraction Tool Kit
(for L1, L2)

- LM20.104646**
Light Source Extraction Tool Kit
(for L3, L4, L5)

REQUIRED WITH HOUSING



- LM20.103977**
Couple of closing end caps



- LM20.104813**
Coupling joint for continuous lines

Job Name/Date:

Fixture Type Designation:

MIN / MAX - LINEA IP68



SUITABLE FOR USE IN FOUNTAINS or POOLS

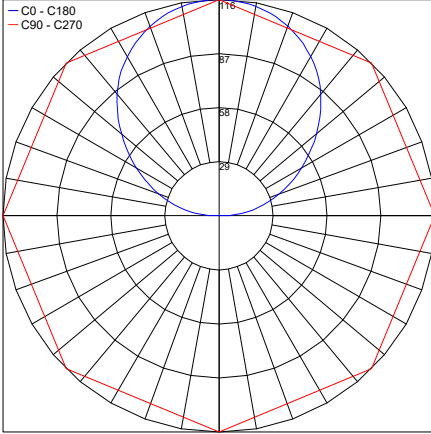
datasheet

PHOTOMETRIC DATA

L1

Maximum Candela = 115.9

— C0 - C180
— C90 - C270

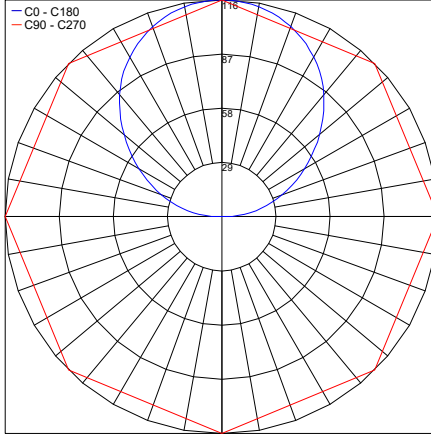


PHOTOMETRIC FILENAME : L1 LM07.103874.XX.DI.XX L250 IP68.IES

L2

Maximum Candela = 115.9

— C0 - C180
— C90 - C270

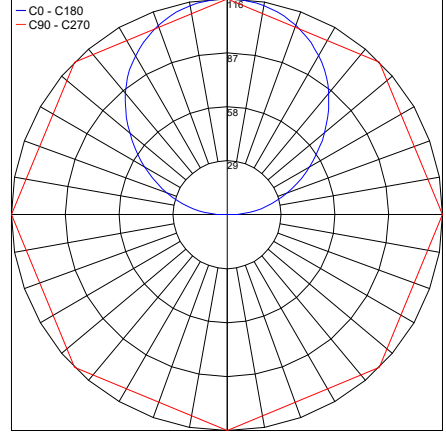


PHOTOMETRIC FILENAME : L2 LM07.103875.XX.DI.XX L500 IP68.IES

L3

Maximum Candela = 115.9

— C0 - C180
— C90 - C270

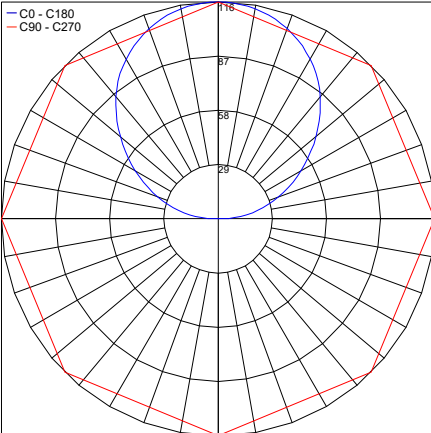


PHOTOMETRIC FILENAME : L3 LM07.103876.XX.DI.XX L750 IP68.IES

L4

Maximum Candela = 115.9

— C0 - C180
— C90 - C270

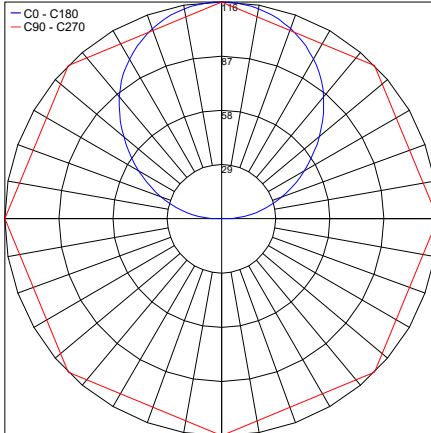


PHOTOMETRIC FILENAME : L4 LM07.103929.XX.DI.XX L1000 IP68.IES

L5

Maximum Candela = 115.9

— C0 - C180
— C90 - C270



PHOTOMETRIC FILENAME : L5 LM07.103930.XX.DI.XX L1250 IP68.IES

Job Name/Date:

Fixture Type Designation: