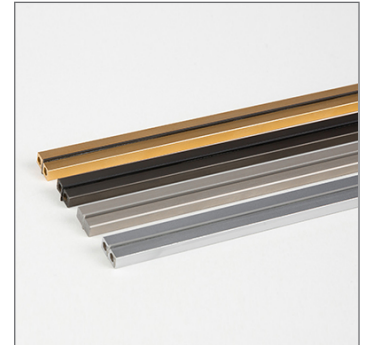




INSTRUCTIONS PERTAINING TO RISK OF FIRE OR INJURY TO PERSONS. READ ALL INSTRUCTIONS. IMPORTANT SAFETY INSTRUCTIONS. SAVE THESE INSTRUCTIONS.

DANGER - RISK OF SHOCK - DISCONNECT POWER BEFORE INSTALLATION! Please read all instructions before installation.

- Keep these instructions for future reference.
- Must be installed by a qualified electrician in accordance with national and local standards. Designplan is not responsible for fixtures installed without regard to these standards.
- Unauthorized alterations or tampering of product voids warranty.
- The main power connection must be in accordance with local electrical codes.
- Suitable for INDOOR applications.
- DO NOT INSTALL INSULATION WITHIN 3.0" (76 mm) OF ANY PART OF THE LUMINAIRE.



IP40

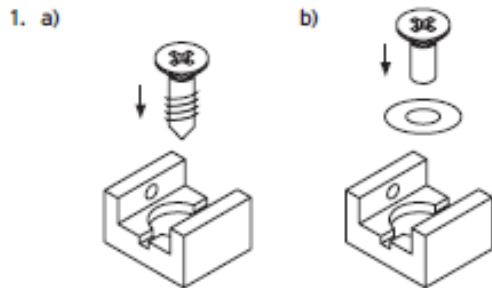
Electrical Connections:

- LED lights must be **connected in parallel** respecting polarities.
- **CHOOSE POWER SUPPLY ACCORDINGLY.** Please consider the voltage through which fixtures are fed as well as the max power consumption.
- **Connect power only if all the fixtures are connected.**
- The power supplies MUST be installed in aerated rooms, far from heat sources. Overworking or lack of air circulation will not permit natural dissipation.
- Use only Class 2 type electronic power supply.
- Never use switches on secondary circuit.

Maintenance

Scheduled maintenance must be carried out once a year on all lighting devices, regardless of appliance class and type of use. It must include the following operations:

- Periodically clean fixtures to remove dirt from gratings and screw heads.
- Check tightness of screws on various parts of the device.
- Check that all cable glands and cables are intact and tight. Check that the glass or plastic lens is intact, and replace it if broken or damaged.
- The internal components such as the ballast, driver, washers and screws must not show clear signs of oxidation or rust. Clear traces of rust and oxidation will indicate the presence of water inside the device.
- In the case of damage, the components must be replaced by original components or spare parts.

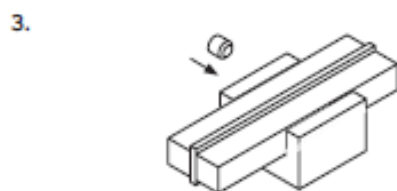
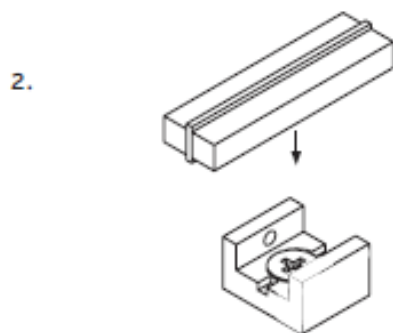


- a) Wooden surface
- b) Metal surface

Fasten the holder with a screw

(pay attention to sufficient tightening force)

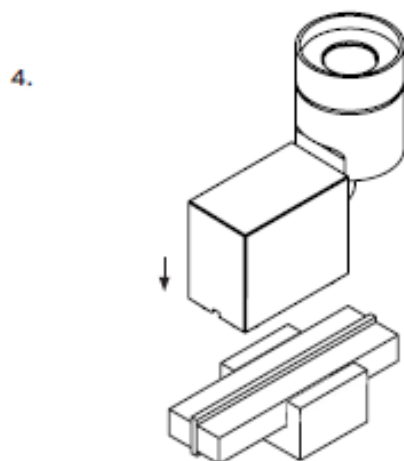
Insert the magnetic track



Fix the magnetic track with a grub screw M3x4

(pay attention to sufficient tightening force, 0.3 – 0.5Nm)

Attach the LED spotlight to the track



Note: Don't slide the spotlight on the magnetic track

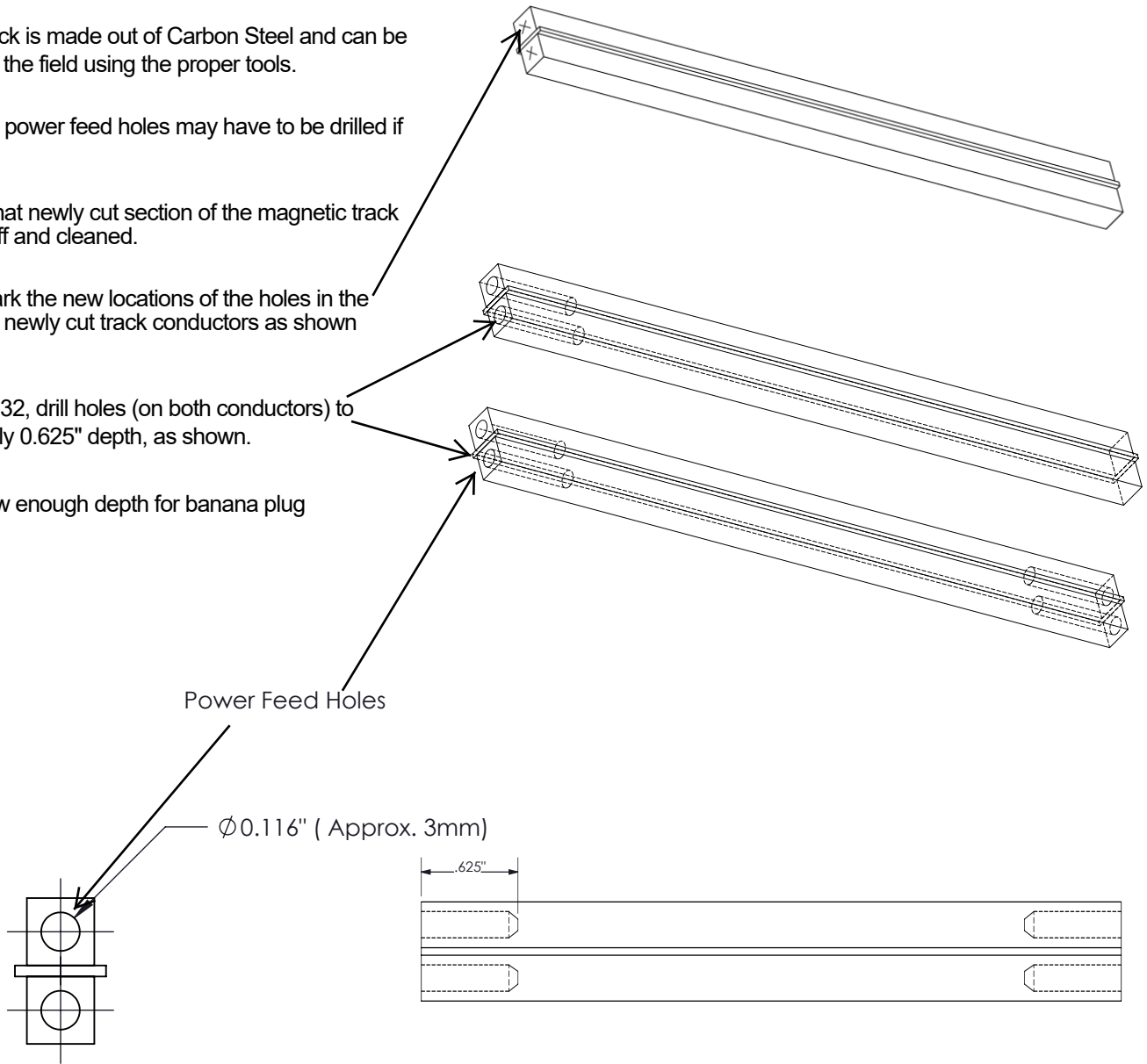
Note:

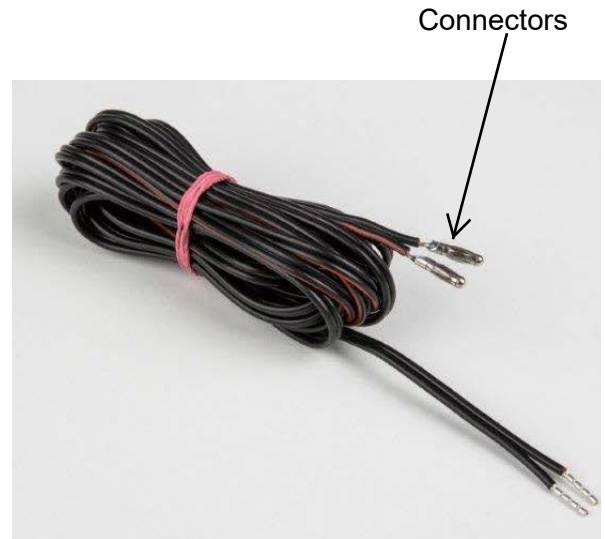
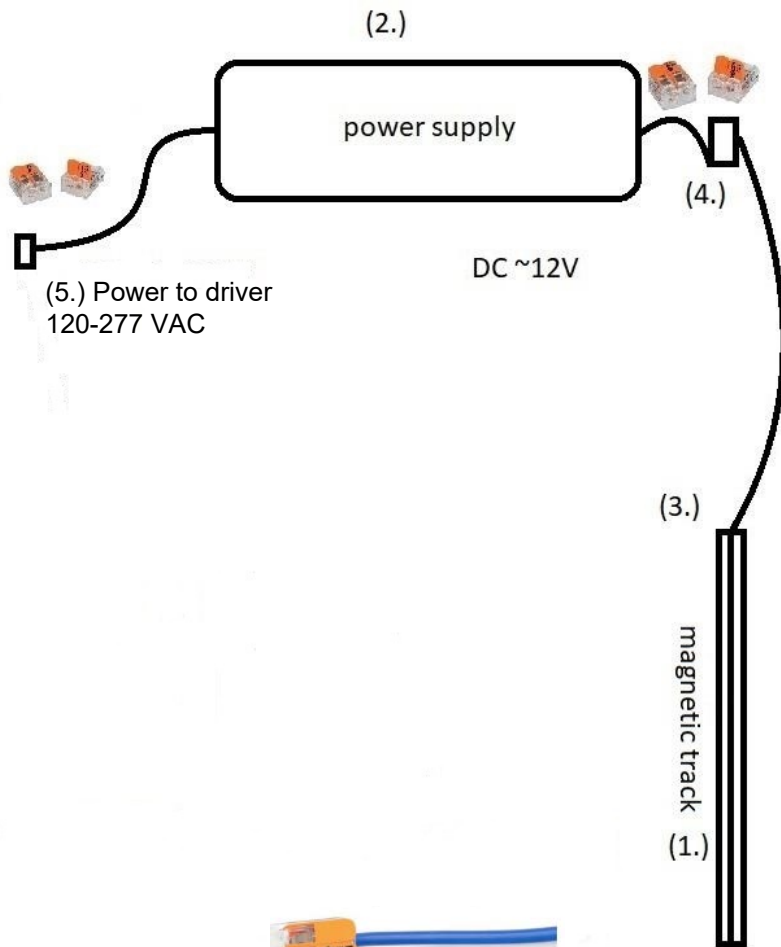
Standard magnetic track comes with factory pre-cut holes on both ends.

If track is cut to size, properly sized holes may need to be drilled on both ends in order for the track to accommodate wire plugs.

Instructions for Cutting the Track (If Applicable)

- Magnetic track is made out of Carbon Steel and can be cut to size in the field using the proper tools.
- After cutting, power feed holes may have to be drilled if necessary.
- Make sure that newly cut section of the magnetic track is squared off and cleaned.
- Precisely mark the new locations of the holes in the center of the newly cut track conductors as shown below.
- Using Drill # 32, drill holes (on both conductors) to approximately 0.625" depth, as shown.
- This will allow enough depth for banana plug connectors.





(Connection cable with connector attached provided with track)



WAGO-connector
(Provided by Others)

1. Mount the magnetic track as described
2. Mount the power supply at the desired location. It is the contractor's responsibility to install Remote Driver in a suitable electrical enclosure.
3. Connect the supplied connection cable of the magnetic track with the magnetic tracks by inserting the plugs into the holes.
4. Connect the supplied connection cable of the magnetic track with the WAGO-connector on the DC voltage level of the power supply (**black to black / red to red**)
5. Connect the open end of the supplied connection cable with the type A plug to the WAGO-connector on the AC voltage level of the power supply (**brown (L) to black / blue (N) to white**)
6. Connect the supplied connection cable with the type A plug to the socket
7. If type A plug is not needed, hard-wire the remote power supply to main connection