



INSTRUCTIONS PERTAINING TO RISK OF FIRE OR INJURY TO PERSONS. READ ALL INSTRUCTIONS. IMPORTANT SAFETY INSTRUCTIONS. SAVE THESE INSTRUCTIONS.

DANGER - RISK OF SHOCK - DISCONNECT POWER BEFORE INSTALLATION! Please read all instructions before installation.

- Keep these instructions for future reference.
- Must be installed by a qualified electrician in accordance with national and local standards. Designplan is not responsible for fixtures installed without regard to these standards.
- Unauthorized alterations or tampering of product voids warranty.
- The main power connection must be in accordance with local electrical codes.
- Suitable for OUTDOOR applications.



RECESSED



SURFACE MOUNT



**IP65, IP67
IK08**

ATTENTION: For Wall/Ceiling - It is the contractor's responsibility to caulk around all the edges between the fixture and the mounting surface to satisfy wet label requirements.

For In-Grade - It is the contractor's responsibility to seal the conduit with "Great Stuff" aerosol seal that prevents water and moisture penetration for ultimate protection. Contractor **MUST** use gel-filled wire nuts.

Maintenance

Scheduled maintenance must be carried out once a year on all lighting devices, regardless of appliance class and type of use. It must include the following operations:

- Periodically clean fixtures to remove dirt from gratings and screw heads.
- Check tightness of screws on various parts of the device.
- Check that all cable glands and cables are intact and tight. Check that the glass or plastic lens is intact, and replace it if broken or damaged.
- The internal components such as the ballast, driver, washers and screws must not show clear signs of oxidation or rust. Clear traces of rust and oxidation will indicate the presence of water inside the device.
- In the case of damage, the components must be replaced by original components or spare parts.

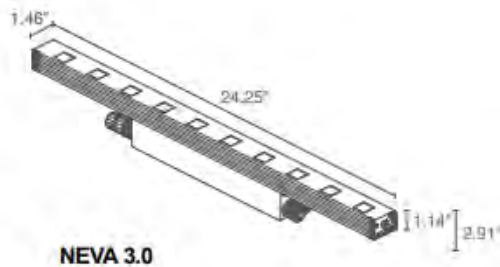
NEVA 3.0, 3.1, 3.2 RECESSED /SURFACE



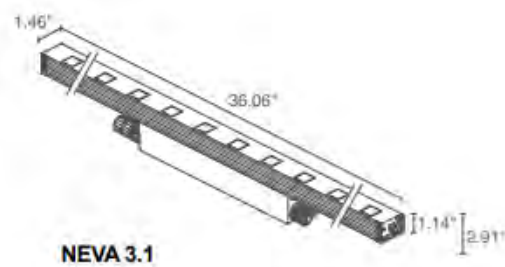
23W, 39W, 64W, INTEGRAL 120VAC

installation instructions

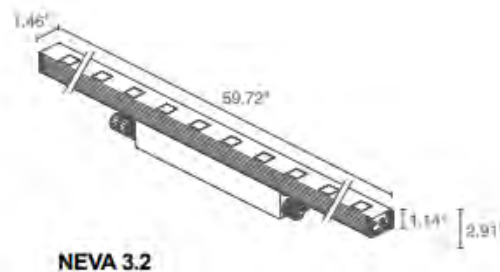
FIXTURE DIMENSIONS:



NEVA 3.0



NEVA 3.1



NEVA 3.2

ACCESSORIES - Installation



WMA01N

Pair of brackets 2.95" h



WMA02N

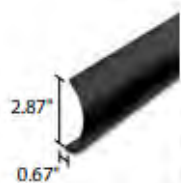
Pair of brackets 5.51" h



WFA01

4-pin male connector
for in/out connection (0/1-10V
version - 3.0 or 3.1) IP68

Anti-Glare



Anti-Glare Shield

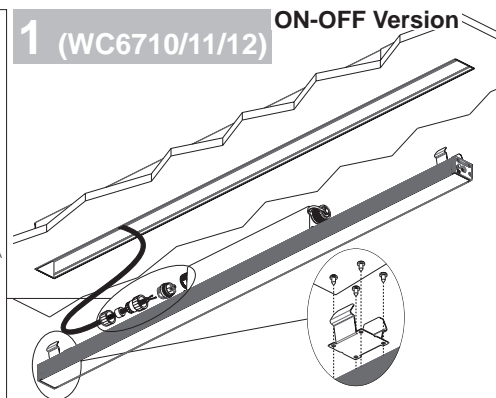
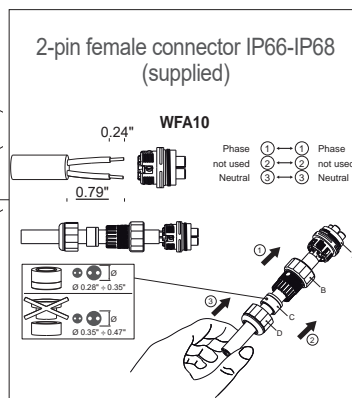
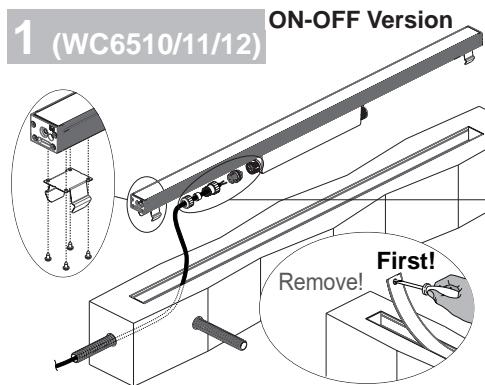
Stainless steel painted black

WB6510 - Neva 3.0 (24.09")

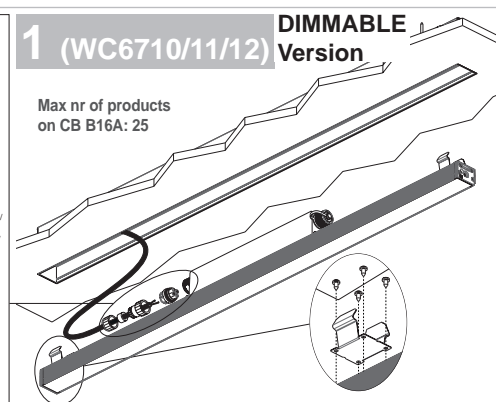
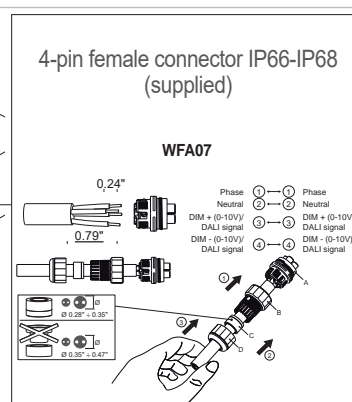
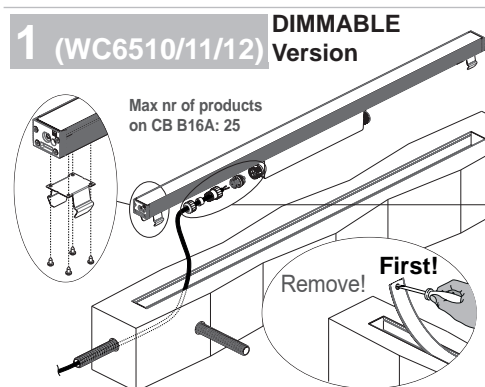
WB6511 - Neva 3.1 (35.91")

WB6512 - Neva 3.2 (59.57")

FIXTURE INSTALLATION:



After wiring, tighten cable gland "B" on trim "A", then insert grommet "C" on cable gland "B". Finally, firmly fix nut "D" on cable gland "B".



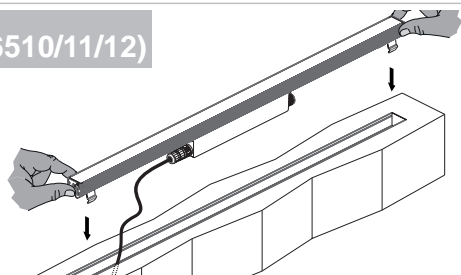
NEVA 3.0, 3.1, 3.2 RECESSED /SURFACE



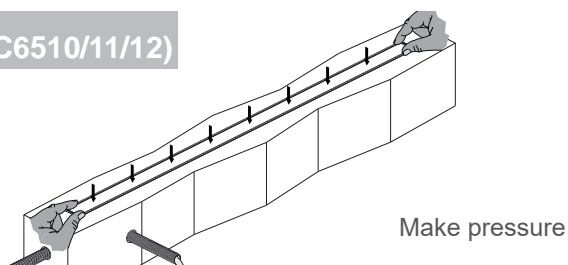
23W, 39W, 64W, INTEGRAL 120VAC

installation instructions

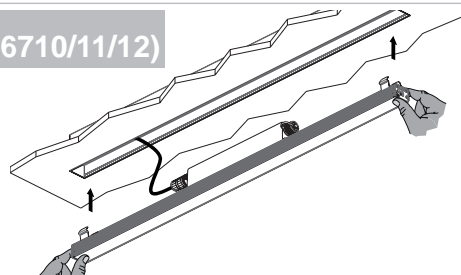
2 (WC6510/11/12)



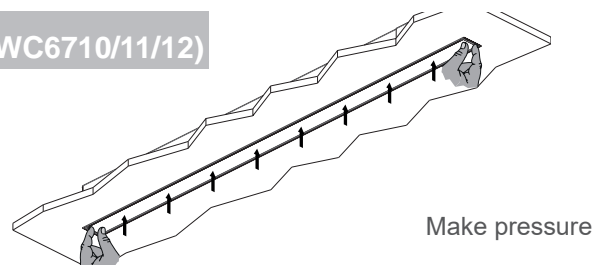
3 (WC6510/11/12)



2 (WC6710/11/12)

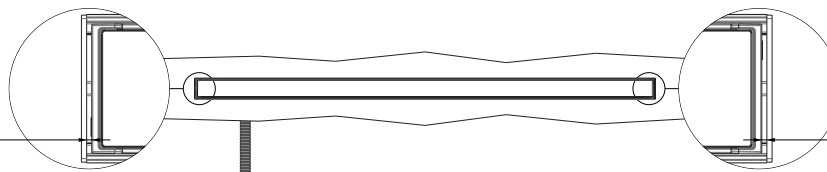


3 (WC6710/11/12)



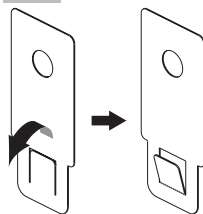
4

Gap:
Neva 3.0 - 0.05"
Neva 3.1 - 0.05"
Neva 3.2 - 0.04"

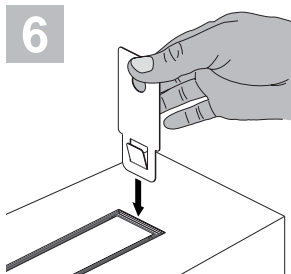


Gap:
Neva 3.0 - 0.05"
Neva 3.1 - 0.05"
Neva 3.2 - 0.04"

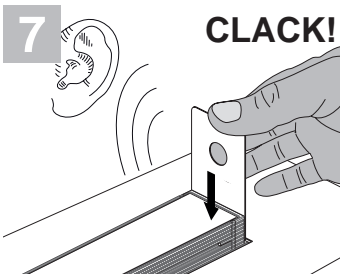
5



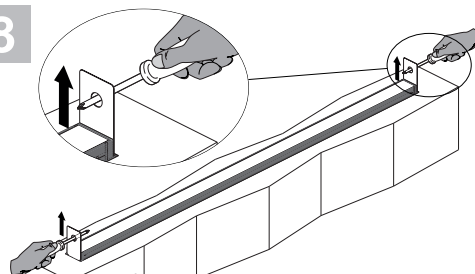
6



7



8



NEVA 3.0, 3.1, 3.2 RECESSED /SURFACE

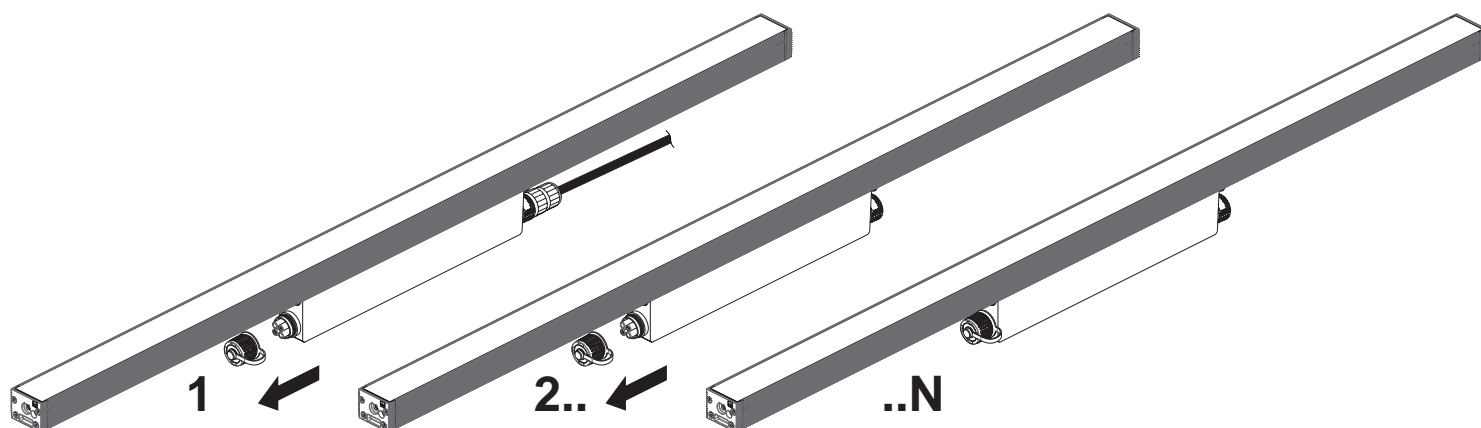
23W, 39W, 64W, INTEGRAL 120VAC

designplan®

installation instructions

IN-OUT connection

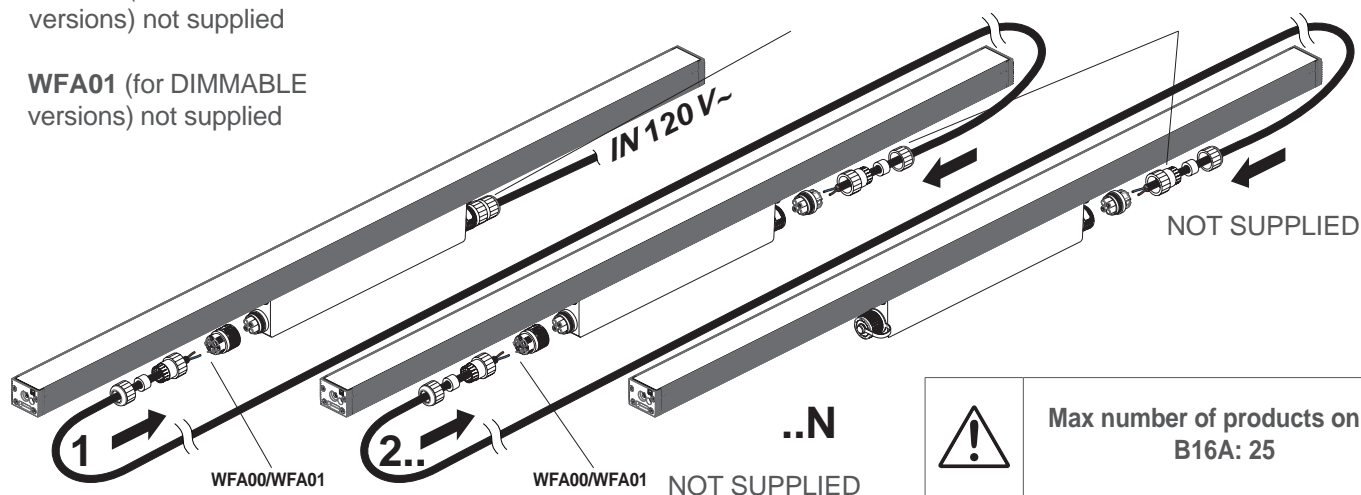
1



2

WFA00 (for ON-OFF versions) not supplied

WFA01 (for DIMMABLE versions) not supplied



Max number of products on CB
B16A: 25



Only power up the system once all the all the lamps are connected. Connecting an individual lamp to an active power supply may cause the lamp to break due to over voltage