

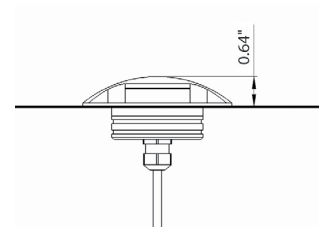
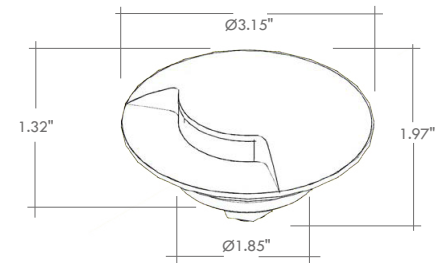
Nail Pro is an IP67-rated, in-grade uplight suitable for ground or wall installation, perfect for marking paths, transforming corridors and lighting stairs. Nail Pro comes in 3 color temperatures and 4 different directional beam options. Nail Pro 1 is the single direction beam version in a stainless steel finish.

TECHNICAL DATA

Wattage / Input	4W
Power Supply	Remote 24VDC, not included. See page 2.
Construction	Body: Anodized Anticorodal Aluminum AISI 316L Stainless Steel Cable Length: 1.64'
CCT	2700K, 3000K, 4000K
BUG Rating	B0-U3-G3 (3000K)
Delivered Lumens	475 lm (3000K)
Efficacy	118.7 lm/W (3000K)
Optics	Asymmetric
Finishes	Stainless Steel
Fixture Dimensions	Ø3.15" x 1.97" h
Cut-Out Size	Ø1.89"
Color Consistency	<3-Step MacAdam
IP Rating	IP67
Impact Resistance	IK10
Driveover Capacity	Up to 6614 lbs



Fixture Dimensions



ORDERING INFORMATION

Example: LM07.104038.US.05.AS.BP. Accessories / Power Supplies ordered separately.

LM07.104038.US	05	AS	
Model No.	Finish	Optic	CCT
LM07.104038.US	05 - Stainless	AS - Asymmetric	BC - 2700K BP - 3000K BF - 4000K

Job Name/Date:

Fixture Type Designation:

SUGGESTED POWER SUPPLIES

Remote 24VDC Driver in NEMA Enclosure - ELV / TRIAC / 0-10V

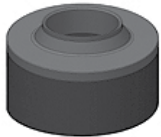


PPLT00715

Part Number	Description	Input/Output	# of Fixtures
PPLT00715	ELV / TRIAC / 0-10V Dimming to 0.1%	120-277VAC to 24VDC, 96W, Class 2, WET/DAMP	1-19

For other power supply options consult factory.

ACCESSORIES - Installation



LM20.104145

Outer Casing IP20

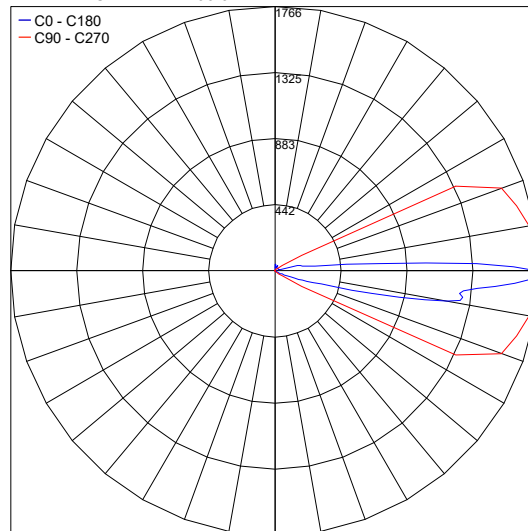
Sizes Ø3.54" x 3.35" h

For in-grade use

PHOTOMETRIC DATA

Note: All photometric data is 3000K

Maximum Candela = 1766.0



PHOTOMETRIC FILENAME : NAIL PRO 1 3000K LM07.104038.05.AS.BP.IES

Job Name/Date:

Fixture Type Designation: