

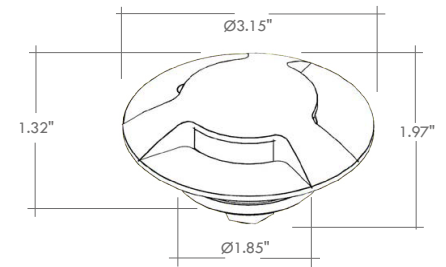
Nail Pro is an IP67-rated, in-grade upright suitable for ground or wall installation, perfect for marking paths, transforming corridors and lighting stairs. Nail Pro comes in 3 color temperatures and 4 different directional beam options. Nail Pro 3 is the triple direction beam version in a stainless steel finish.

## TECHNICAL DATA

<b>Wattage / Input</b>	4W (24VDC)
<b>Power Supply</b>	Remote, not included. See page 2.
<b>Construction</b>	Body: Anodized Anticorodal Aluminum AISI 316L Stainless Steel Cable Length: 1.64'
<b>CCT</b>	2700K, 3000K, 4000K
<b>BUG Rating</b>	B0-U3-G2 (3000K)
<b>Delivered Lumens</b>	475 lm (3000K)
<b>Efficacy</b>	118.8 lm/W (3000K)
<b>Optics</b>	Asymmetric
<b>Finishes</b>	Stainless Steel
<b>Fixture Dimensions</b>	Ø3.15" x 1.97" h
<b>Cut-Out Size</b>	Ø1.89"
<b>Color Consistency</b>	<3-Step MacAdam
<b>IP Rating</b>	IP67
<b>Impact Resistance</b>	IK10
<b>Driveover Capacity</b>	Up to 6614 lbs



Fixture Dimensions



## ORDERING INFORMATION

Example: LM07.104040.US.05.AS.BP. Accessories / Power Supplies ordered separately.

LM07.104040.US	05	AS	
<b>Model No.</b>	<b>Finish</b>	<b>Optic</b>	<b>CCT</b>
LM07.104040.US	05 - Stainless	AS - Asymmetric	BC - 2700K BP - 3000K BF - 4000K

Job Name/Date:

Fixture Type Designation:

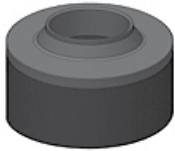
## SUGGESTED POWER SUPPLIES

24VDC

Part Number	Description	Input/Output	# of Fixtures
<a href="#">PPLT00128</a>	Non-Dim	120VAC to 24VDC, 6W, Class 2, IP65	1-1
<a href="#">PPLT00149</a>	Non-Dim	120VAC to 24VDC, 10W, Class 2, IP65	1-2
<a href="#">PPLT00632</a>	0-10V Dimming (Dim to Off)	120-277VAC to 24VDC, 12W, Class 2	1-2
<a href="#">PPLT00056</a>	Non-Dim	120V-277AC to 24VDC, 26W, Class 2, IP66	1-5
<a href="#">PPLT00155</a>	Non-Dim	120VAC to 24VDC, 30W, Class 2	1-6
<a href="#">PPLT00157</a>	Non-Dim	120VAC to 24VDC, 60W, Class 2	1-12
<a href="#">PPLT00627</a>	ELV/TRIAC & 0-10V Dimming (100-0%), IP67	120-277VAC to 24VDC, 96W, Class 2	1-19
<a href="#">PPLT00158</a>	Non-Dim	120VAC to 24VDC, 100W, Class 2	1-20
<a href="#">PPLT00543</a>	0-10V Dimming to 15% (-40°C / -40°F cold weather start)	120-277VAC to 24VDC, 100W, Class 2	3-20

For other power supply options consult factory.

## ACCESSORIES - Installation



### LM20.104145

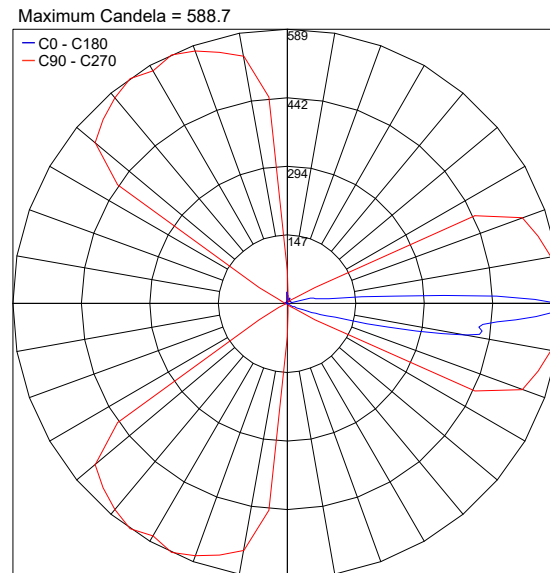
Outer Casing IP20

Sizes Ø3.54" x 3.35" h

For in-grade use

## PHOTOMETRIC DATA

Note: All photometric data is 3000K



PHOTOMETRIC FILENAME : NAIL PRO 3 3000K LM07.104040.05.AS.BP.IES

Job Name/Date:

Fixture Type Designation: