

NAIL PRO 4

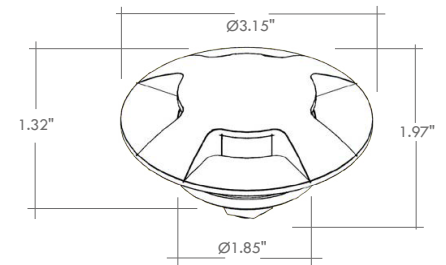
Nail Pro is an IP67-rated, in-grade upright suitable for ground or wall installation, perfect for marking paths, transforming corridors and lighting stairs. Nail Pro comes in 3 color temperatures and 4 different directional beam options. Nail Pro 4 is the four direction beam version in a stainless steel finish.

TECHNICAL DATA

Wattage / Input	4W
Power Supply	Remote, not included. Consult Factory.
Construction	Body: Anodized Anticorodal Aluminum AISI 316L Stainless Steel Cable Length: 1.64'
CCT	2700K, 3000K, 4000K
BUG Rating	B0-U3-G2 (3000K)
Delivered Lumens	475 lm (3000K)
Efficacy	118.8 lm/W (3000K)
Optics	Asymmetric
Finishes	Stainless Steel
Fixture Dimensions	Ø3.15" x 1.97" h
Cut-Out Size	Ø1.89"
Color Consistency	<3-Step MacAdam
IP Rating	IP67
Impact Resistance	IK10
Driveover Capacity	Up to 6614 lbs



Fixture Dimensions



ORDERING INFORMATION

Example: LM07.104041.US.05.AS.BP. Accessories / Power Supplies ordered separately.

LM07.104041.US	05	AS	
Model No.	Finish	Optic	CCT
LM07.104041.US	05 - Stainless	AS - Asymmetric	BC - 2700K BP - 3000K BF - 4000K

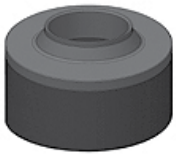
Job Name/Date:

Fixture Type Designation:

SUGGESTED POWER SUPPLIES

Consult Factory

ACCESSORIES - Installation



LM20.104145

Outer Casing IP20

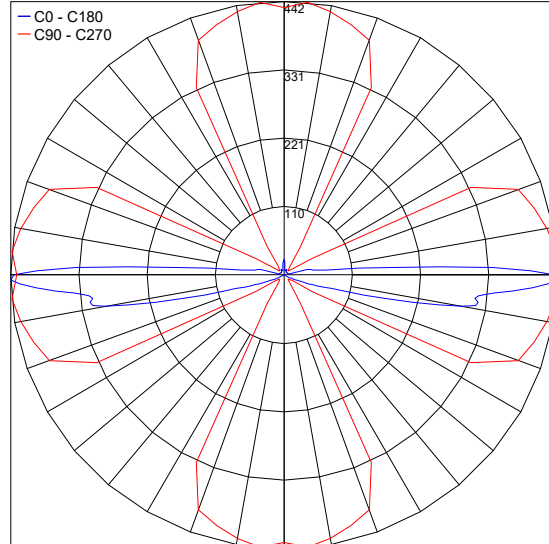
Sizes Ø3.54" x 3.35" h

For in-grade use

PHOTOMETRIC DATA

Note: All photometric data is 3000K

Maximum Candela = 441.9



PHOTOMETRIC FILENAME : NAIL PRO 4 3000K LM07.104041.05.AS.BP.IES

Job Name/Date:

Fixture Type Designation: