

# NOBODY QUATRO

Nobody Quatro is a square downlight for indoor installation on ceilings. It has an integral 120-277VAC power supply and an opal prismatic diffuser lens. Made in the U.S.A. and ADA compliant.



**MADE IN THE USA**  
ADA Compliant

## TECHNICAL DATA

<b>Wattage / Input</b>	16W (24VDC)
<b>Power Supply</b>	Remote, not included. See page 2.
<b>Construction</b>	Body: Zinc Coated Steel Lens: 0.187" Thick UV Stabilized Polycarbonate
<b>CCT</b>	3000K, 4000K, 5000K
<b>CRI</b>	-
<b>Delivered Lumens</b>	- lm (3000K)
<b>Efficacy</b>	- lm/W
<b>Finishes</b>	Semigloss White
<b>LED Source</b>	16 x 1W Cree XPE LEDs
<b>Fixture Dimensions</b>	
<b>Fixture Weight</b>	-
<b>IP Rating</b>	IP44
<b>IK Rating</b>	IK10++

## ORDERING INFORMATION

*Example: NB5-L-1Q-1-01-1-C-X-0 Power Supplies ordered separately.*

	-		-	1	-	01	-	1	-	C	-	X	-	0
Series	Wattage	Body	Finish	Grill	Ballast	Lens	Options							
NB5 - (Nom. 10" Square)	1Q - 3000K LED	1 - Surface Mount	01 - Semigloss White	1 - Std.	C - 120-277VAC Integral Elec. Driver	X - Opal Polycarbonate Lens	0 - None							
NB6 - (Nom. 13" Square)	2Q - 4000K LED	No Conduit Entries												
NB7 - (Nom. 15" Square)	3Q - 5000K LED													
L - LED														

Job Name/Date:

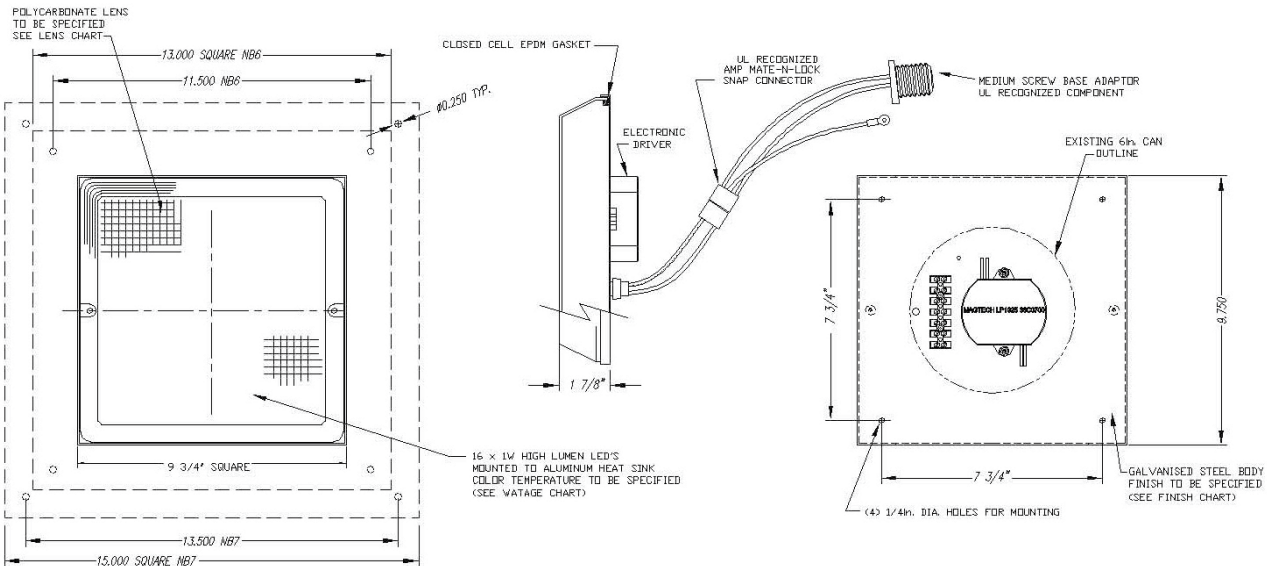
Fixture Type Designation:

## SUGGESTED POWER SUPPLIES 24VDC

Part Number	Description	Input/Output	# of Fixtures
<a href="#">PPLT00128</a>	Non-Dim	120VAC to 24VDC, 6W, Class 2, IP65	1-2
<a href="#">PPLT00275</a>	Non-Dim	120-277VAC to 24VDC, 12W, Class 2, IP66	1-4
<a href="#">PPLT00156</a>	Non-Dim	120-277VAC to 24VDC, 45W, Class 2	1-18
<a href="#">PPLT00284</a>	Non-Dim	120-277VAC to 24VDC, 100W, Class 2	1-40
<a href="#">PPLT00543</a>	0-10V Dimming to 15% (-40°C / -40°F cold weather start)	120-277VAC to 24VDC, 100W, Class 2	1-40

For other power supply options consult factory.

## FIXTURE DIMENSIONS



Job Name/Date:

Fixture Type Designation: