

NOBODY QUATRO

Nobody Quatro is a square downlight for indoor installation on ceilings. It has an integral 120-277VAC power supply and an opal prismatic diffuser lens. Made in the U.S.A. and ADA compliant.



MADE IN THE USA
ADA Compliant

TECHNICAL DATA

Wattage / Input	16W (24VDC)
Power Supply	Remote, not included. See page 2.
Construction	Body: Zinc Coated Steel Lens: 0.187" Thick UV Stabilized Polycarbonate
CCT	3000K, 4000K, 5000K
CRI	-
Delivered Lumens	- lm (3000K)
Efficacy	- lm/W
Finishes	Semigloss White
LED Source	16 x 1W Cree XPE LEDs
Fixture Dimensions	
Fixture Weight	-
IP Rating	IP44
IK Rating	IK10++

ORDERING INFORMATION

Example: NB5-L-1Q-1-01-1-C-X-0 Power Supplies ordered separately.

	-		-	1	-	01	-	1	-	C	-	X	-	0
Series	Wattage	Body	Finish	Grill	Ballast	Lens	Options							
NB5 - (Nom. 10" Square)	1Q - 3000K LED	1 - Surface Mount	01 - Semigloss White	1 - Std.	C - 120-277VAC Integral Elec. Driver	X - Opal Polycarbonate Lens	0 - None							
NB6 - (Nom. 13" Square)	2Q - 4000K LED	No Conduit Entries												
NB7 - (Nom. 15" Square)	3Q - 5000K LED													
L - LED														

Job Name/Date:

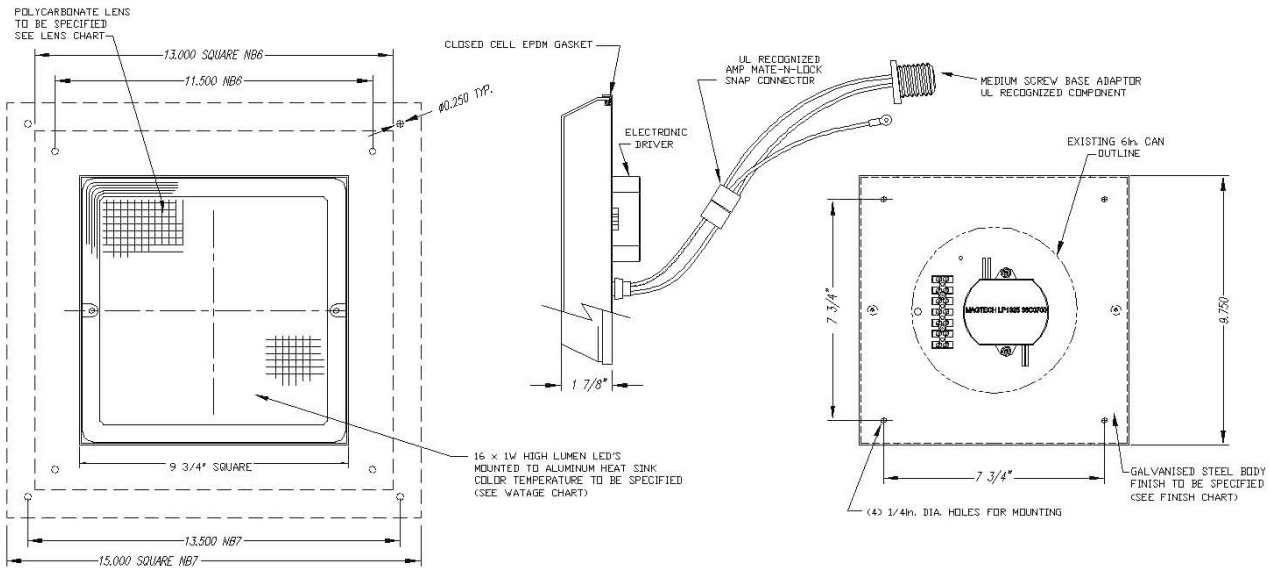
Fixture Type Designation:

SUGGESTED POWER SUPPLIES 24VDC

Part Number	Description	Input/Output	# of Fixtures
PPLT00128	Non-Dim	120VAC to 24VDC, 6W, Class 2, IP65	1-2
PPLT00275	Non-Dim	120-277VAC to 24VDC, 12W, Class 2, IP66	1-4
PPLT00056	Non-Dim	120-277VAC to 24VDC, 26W, Class 2, IP66	1-10
PPLT00156	Non-Dim	120-277VAC to 24VDC, 45W, Class 2	1-18
PPLT00284	Non-Dim	120-277VAC to 24VDC, 100W, Class 2	1-40
PPLT00543	0-10V Dimming to 15% (-40°C / -40°F cold weather start)	120-277VAC to 24VDC, 100W, Class 2	1-40

For other power supply options consult factory.

FIXTURE DIMENSIONS



Job Name/Date:

Fixture Type Designation: