

# PIXO 30, 50 RECESSED

3W, 6.5W. INTEGRAL 120 - 277VAC

designplan®

installation instructions



**INSTRUCTIONS PERTAINING TO RISK OF FIRE OR INJURY TO PERSONS. READ ALL INSTRUCTIONS. IMPORTANT SAFETY INSTRUCTIONS. SAVE THESE INSTRUCTIONS.**

**DANGER - RISK OF SHOCK - DISCONNECT POWER BEFORE INSTALLATION! Please read all instructions before installation.**

- Keep these instructions for future reference.
- Must be installed by a qualified electrician in accordance with national and local standards. Designplan is not responsible for fixtures installed without regard to these standards.
- The main power connection must be in accordance with local electrical codes.
- Unauthorized alterations or tampering of product voids warranty.
- Suitable for INDOOR applications.



**IP20 IP54**

**ATTENTION:** For Wall / Ceiling - It is the contractor's responsibility to caulk around all the edges between the fixture and the mounting surface to satisfy wet label requirements.

## Maintenance

Scheduled maintenance must be carried out once a year on all lighting devices, regardless of appliance class and type of use. It must include the following operations:

- Periodically clean fixtures to remove dirt from gratings and screw heads.
- Check tightness of screws on various parts of the device.
- Check that all cable glands and cables are intact and tight. Check that the glass or plastic lens is intact, and replace it if broken or damaged.
- The internal components such as the ballast, driver, washers and screws must not show clear signs of oxidation or rust. Clear traces of rust and oxidation will indicate the presence of water inside the device.
- In the case of damage, the components must be replaced by original components or spare parts.

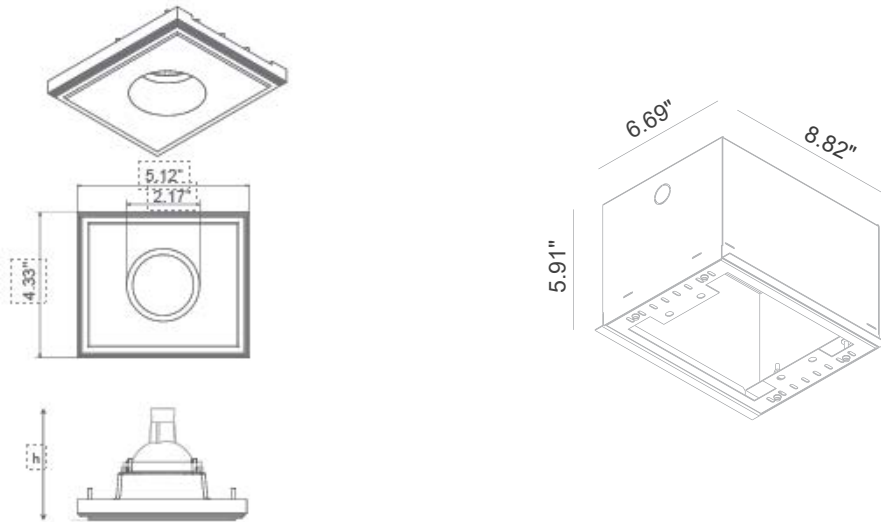
# PIXO 30, 50 RECESSED

3W, 6.5W. INTEGRAL 120 - 277VAC

designplan®

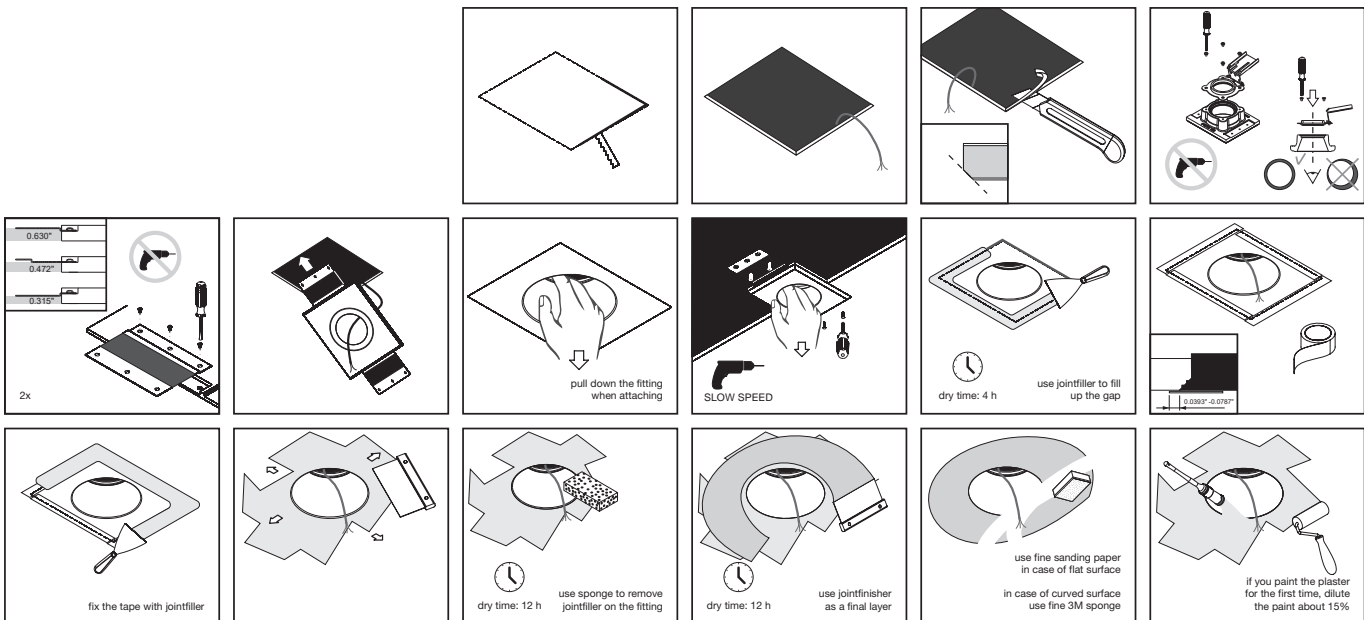
installation instructions

## FIXTURE DIMENSION:



## FIXTURE INSTALLATION

### INSTALLATION IN A GYPSUM CEILING



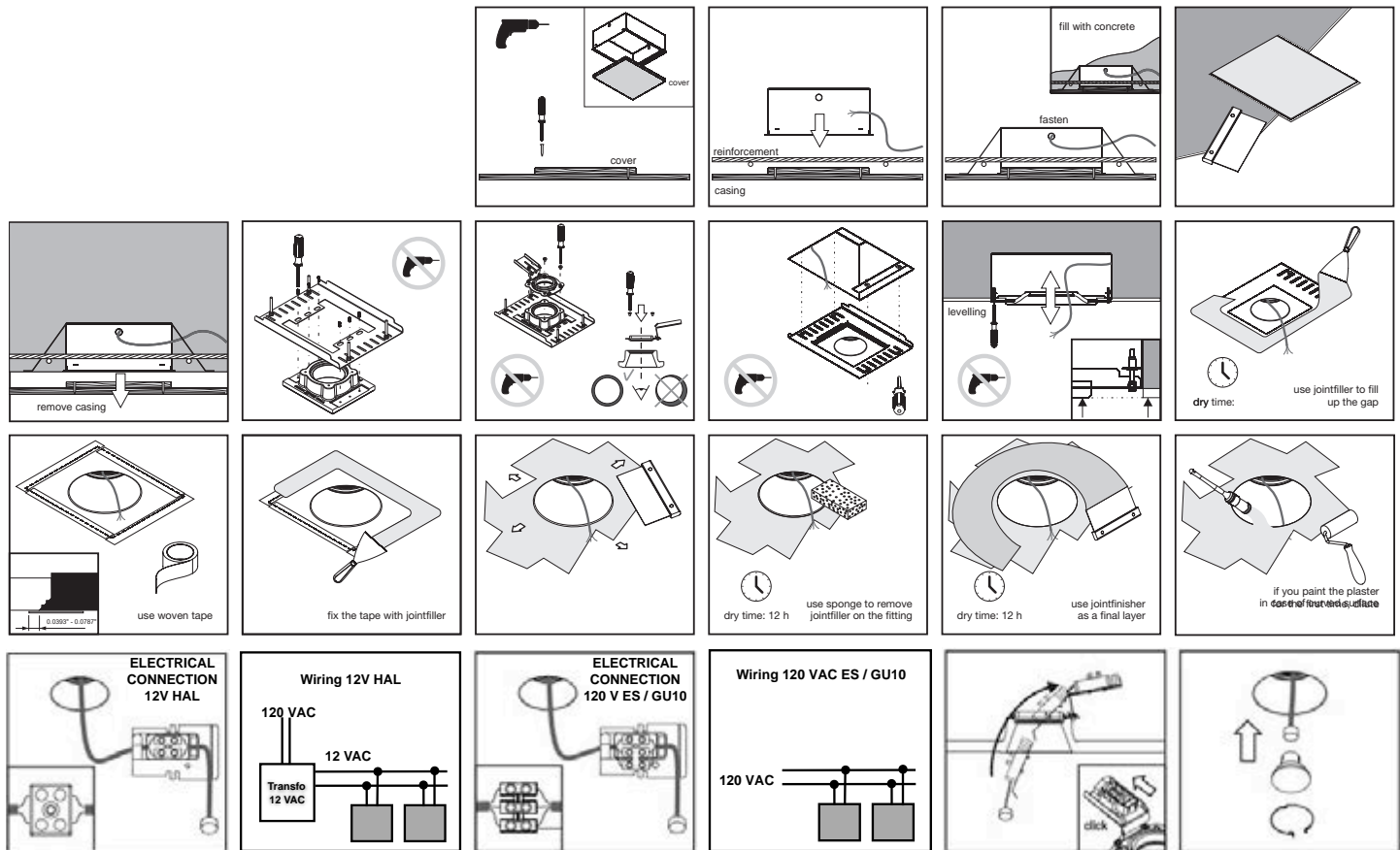
# PIXO 30, 50 RECESSED

3W, 6.5W. INTEGRAL 120 - 277VAC

designplan®

installation instructions

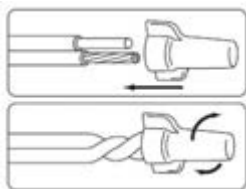
## INSTALLATION IN A CONCRETE CEILING WITH OPTIONAL CONCRETE BOX



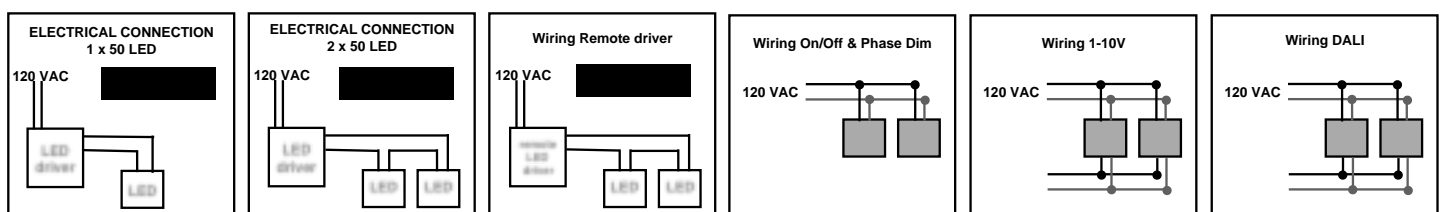
**NOT SUPPLY**

**NOT SUPPLY**

**NOT SUPPLY**



- Use gel-filled waterproof wire-nuts for wire connections.
- It is the contractor's responsibility to install Remote Driver in a suitable electrical enclosure.



**MUST ONLY BE INSTALLED BY QUALIFIED ELECTRICIANS**

**DO NOT TOUCH OR CLEAN LED ARRAYS !**

**LED DRIVERS MUST NOT EXCEED THE MAX DRIVE CURRENT AS SPECIFIED ON THE LED LABEL**