

PIVOT 1.8

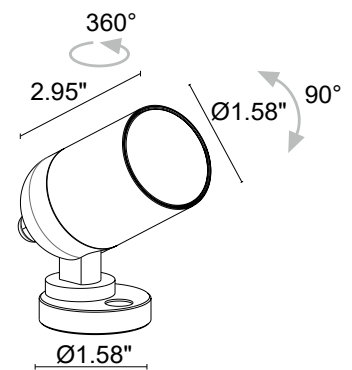
Pivot 1.8 is a compact outdoor projector in RGB with a wide range of optics that can be surface mounted, used with a fastener strap, or ground spike. Adjustable 360° on the horizontal axis and +/- 90° on the vertical axis.



TECHNICAL DATA

Wattage / Input	4.5W (500mA)
Power Supply	Remote, not included. See page 2.
Construction	Body: Anti-corrosive Aluminum Alloy EN AW 6082 Lens: Tempered Extra-clear Glass Cable: Includes 4.9' standard
CCT	RGB
Delivered Lumens	154 lm: (R) 43 lm, (G) 84 lm, (B) 27 lm (33°)
Efficacy	34.2 lm/W (33°)
Optics	6 Standard (see below)
Finishes	7 Standard, Custom RAL (see below)
Fixture Dimensions	Ø1.58" x 2.95", Ø1.58" Base
Fixture Weight	0.88 lbs
LED Source	3 Power LEDs
Lumen Maintenance	L90, B10>50,000hrs (Ta 25°C)
Operating Temp.	-4°F to +113°F
IP Rating	IP65
Impact Rating	IK07

Fixture Dimensions



ORDERING INFORMATION

Example: CP1820N00160SE or CP1820N00160SE-2. Accessories / Power Supplies ordered separately.

CP1820	N		6			-	
Model #	Wattage	Optical Accessories	CCT	Optics	Finish	Cable Length	
CP1820	N - 4.5W	000 - None 001 - Honeycomb Louvre	6 - RGB	0S - 20° 0M - 33° 0L - 45° 0K - 58° 0W - 22°x46° 0X - 46°x22°	E - White N - Anodized Black A - Anodized Aluminum H - Anthracite T - Cor-ten 5 - Jasper Green U - Copper C - Custom RAL (consult factory for "C")	4.92' standard	1 - 16.40' 2 - 32.81' 3 - 49.21' 4 - 65.62'

Job Name/Date:

Fixture Type Designation:

SUGGESTED POWER SUPPLIES

RGB - 500mA

Part Number	Description	Input/Output	# of Fixtures
PPLT00244-P	DMX/RDM (Must advise DMX address if not using RDM)	120-277VAC to 500mA, 50W, Class 2	1-6
PPLT00129-P	DMX/RDM (Field Addressable)	120-277VAC to 500mA, 100W, Class 2	1-12

For other power supply options consult factory.

ACCESSORIES - Installation



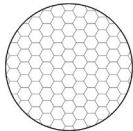
WP0100
Ground Spike
(Length 10.12")



WP1004
Fastener Strap
(Length 16.4')

Additional Cable Lengths
Consult factory

ACCESSORIES - Anti-Glare



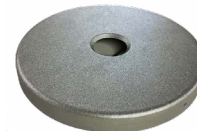
Honeycomb Louvre*
Built into the light fixture
***Order together with the light fixture**



WB0310__
Standard Snoot
For Snoots include one of the below finishes:
E - White
N - Black anodized
A - Anodized aluminum
H - Anthracite
T - Cor-ten
5 - Jasper Green
U - Copper
C - Custom RAL



WB0311__
Asymmetric Snoot



AC-0003__
Mounting Canopy for "J" Box
For Canopy include one of the below finishes:
E - White
N - Black anodized
A - Anodized aluminum
H - Anthracite
T - Cor-ten
5 - Jasper Green
U - Copper
C - Custom RAL



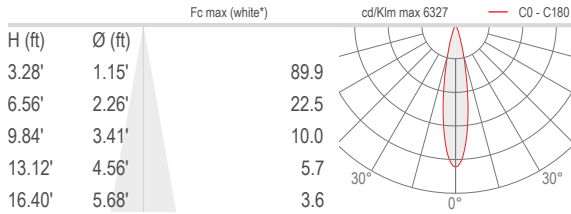
Job Name/Date:

Fixture Type Designation:

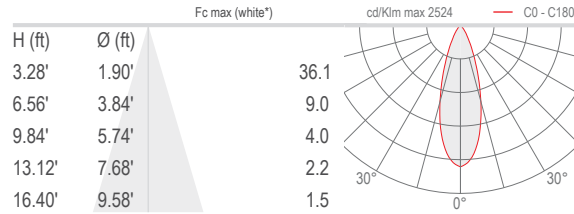
PHOTOMETRIC DATA

Note all Photometry is 3000K

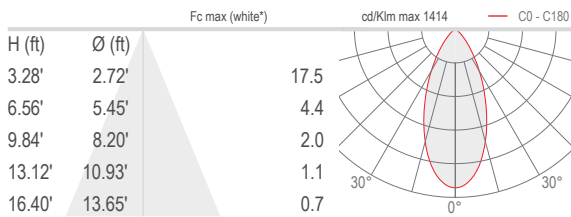
S – 20°



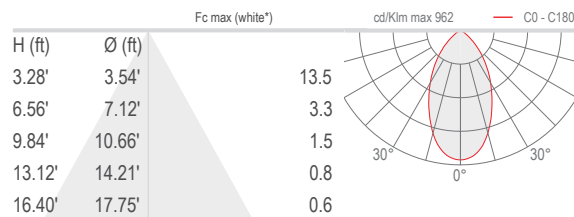
M – 33°



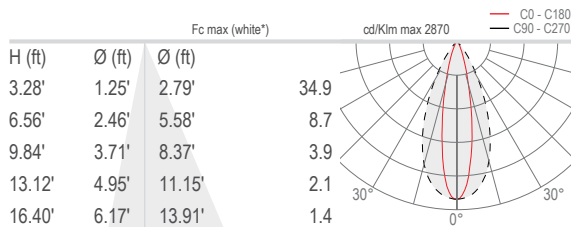
L – 45°



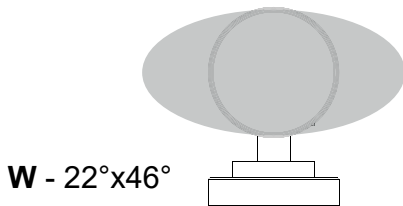
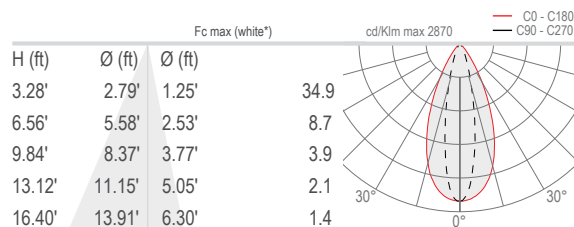
K – 58°



W – 22°x46°



X – 46°x22°



* white created by mixing the colors

Job Name/Date:

Fixture Type Designation: