

Plank is an elegant lighting solution designed for the minimalist. With a 0.625" body and wooden side panels, Plank offers linear spread upper emission and diffused lower. It has adjustable integral 120-277VAC, 0-10V dimming drivers which make for easy integration into office, residential and commercial environments.



White Oak Maple Cherry Walnut

Please note: Wood grain and colors may vary.

TECHNICAL DATA

Wattage / Input	72W (4 ft), 144W (8 ft) (120-277VAC - 347VAC available)
Power Supply	Integral (0-10V Dimming)
Construction	Body: Extruded Aluminum Side Panels: Wood - available white oak, maple, cherry or walnut (contact factory for wood options) Mounting: Aircraft Cable
CCT	2700K, 3000K, 3500K, 4000K
CRI	>90
Delivered Lumens	Up - 1848 lm, Down - 1866 lm (4 ft, 3000K)
Efficacy	Up: 25.6 lm/W, Down: 25.9 lm/W
Optics	Up: Linear Spread, Down: Diffuse
Finishes	4 Standard, See Below.
Fixture Dimensions	See page 2.
IP Rating	IP20

MADE IN THE U.S.A.

Fixture Dimensions
See Chart and Drawing on page 2.

ORDERING INFORMATION

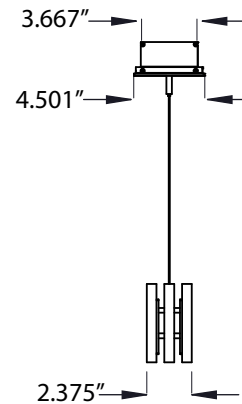
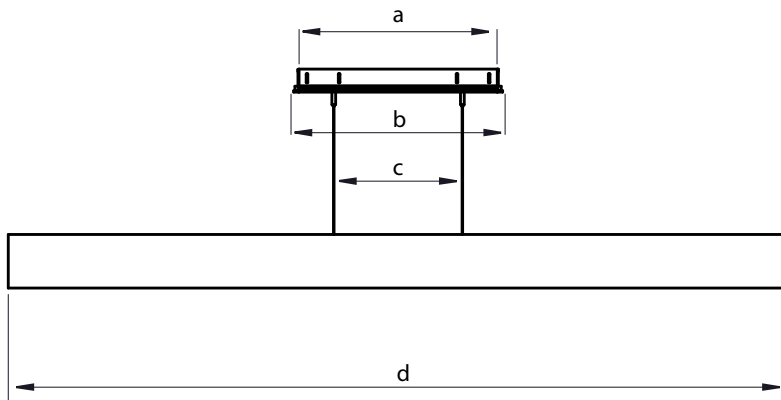
Example: P90-L-6-30-P-10-M-C-SW.

P90-L	-		-		-	P	-		-		-		-	
Model No.	Length	CCT	Body	Finish	Wood	Driver	Canopy							
P90-L	4 - 4 foot 6 - 6 foot <i>Addition for 6-foot version must be added.</i> 8 - 8 foot	27 - 2700K 30 - 3000K 35 - 3500K 40 - 4000K	P - Pendant	02 - Black Suede 18 - Tex. Bronze TS - Silver 11 - White Suede 99 - Custom	O - White Oak M - Maple C - Cherry W - Walnut	C - 120-277VAC, 0-10V Dimming 2 - 347V, 0-10V Dimming NOTE: AS & AW utilize a rosette mounting pattern to allow direct mounting to a junction box that will hold a minimum of 50 lbs.	RC - Recessed* SC - Surface* RW - Recessed, White SW - Surface, White AS - Surface Acoustical Tile* AW - Surface Acoustical Tile, White * Same finish as fixture - Other color on request							

Job Name/Date:

Fixture Type Designation:

FIXTURE DIMENSIONS

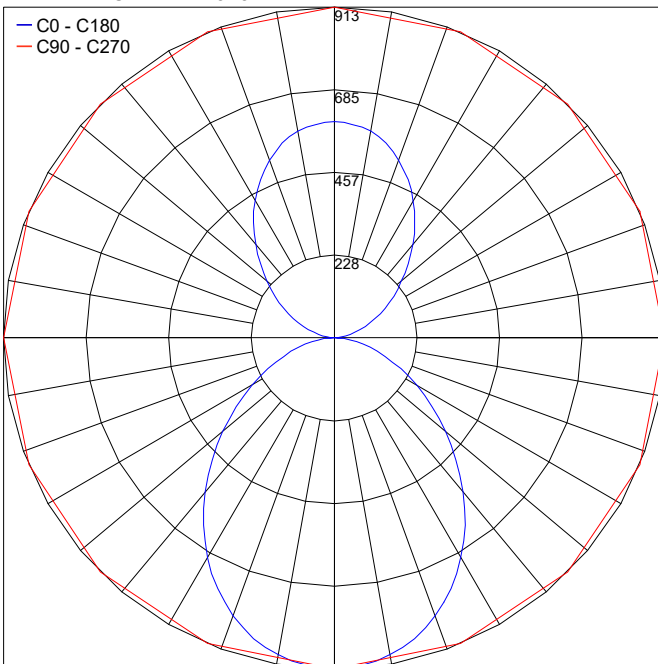


Dimensions	4 Ft.	6 Ft.
a	18.7"	18.7"
b	19.5"	19.5"
c	16"	12"
d	48.7"	72.7"

PHOTOMETRIC DATA

Note all Photometry is 3000K

Maximum Candela = 913



Job Name/Date:

Fixture Type Designation: