

# QSR DOWNLIGHT

The QSR Downlight is a vandal resistant, IP65 wet label fixture that is IC and Chicago Plenum rated. It is suitable for steam rooms available in white light and with a 25° x 25° optic.



**MADE IN THE U.S.A.**

Fixture Dimensions  
(see drawing on page 2)

## TECHNICAL DATA

<b>Wattage / Input</b>	26W (1050mA)
<b>Power Supply</b>	Remote, not included. See page 2.
<b>Construction</b>	Body: 20 Ga. Cold Rolled Steel (Powder Black Finish) Neck: Die Cast Aluminum Lens: 3/16" Thick Clear or Opal Polycarbonate
<b>CCT</b>	2700K, 3000K, 3500K, 4000K
<b>CRI</b>	>80 (>90 on request, consult factory)
<b>Delivered Lumens</b>	2342 lm (3000K)
<b>Efficacy</b>	90 lm/W
<b>Optics</b>	25° x 25°
<b>Finishes</b>	5 Standard, plus 4 Marine Grade. See Below.
<b>Fixture Dimensions</b>	5.6" x 5.6" - 12.6 l x 8.06 h (see drawing on page 2)
<b>Aperature</b>	3.6" x 3.6"
<b>LED Source</b>	Xicato XIM LED Module
<b>Lumen Maintenance</b>	L70>50,000hrs (Ta 25°C)
<b>Color Consistency</b>	1x2 MacAdam Ellipse (1x2 SDCM)
<b>IP Rating</b>	IP65
<b>Temperature Rating</b>	Tested to 60°C room ambient

## ORDERING INFORMATION

*Example: QSR-L26-40-25-4-MTS-C-RMT-0. Power Supplies ordered separately.*

QSR-L26	-		-		-		-	RMT	-	
Model #	CCT	Optics	Body	Finish	Lens	Dimming	Options			
QSR-L26	27 - 2700K 30 - 3000K 35 - 3500K 40 - 4000K	25 - 25°x25°	4 - Fully Recessed IC Rated C - Fully Recessed Chicago Plenum	11 - White Suede 02 - Black Suede 18 - Tex. Bronze TS - Silver <i>Add prefix "M" to above colors for Marine Grade Clear Overcoat</i> PN - Polished Nickel <i>Marine Grade Clear Overcoat NOT available on Polished Nickel</i>	C - Clear X - Opal R - Assym Spread	RMT - Remote Required  (See page 2 for power supply options)	0 - None 4 - One Circuit Fusing 8 - Special Screws (Please specify) H - Honeycomb Louver			

Job Name/Date:

Fixture Type Designation:

## SUGGESTED POWER SUPPLIES

1050mA

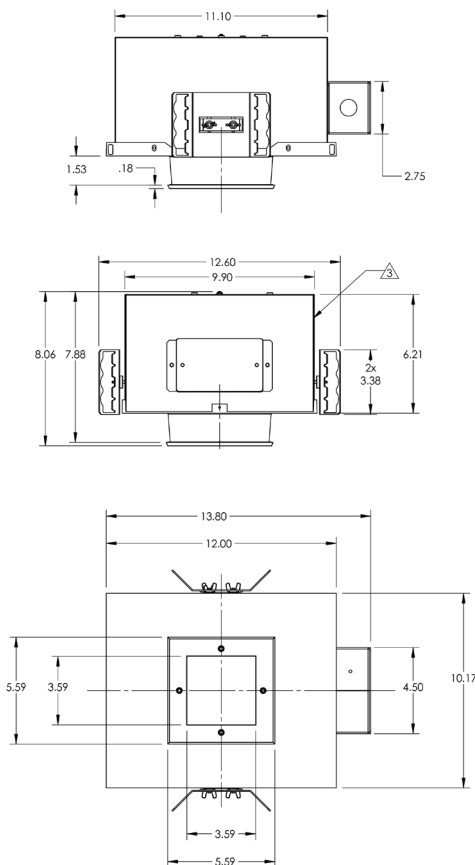
Part Number	Description	Input/Output	# of Fixtures
<a href="#">PPLT00480-P</a>	0-10V Dimming to 1.0%	120-277VAC to 1050mA, 30W, Class 2	1-1
<a href="#">PPLT00602</a>	Phase Dim (120V only)	120-277VAC to 1050mA, 34W, Class 2	1-1
<a href="#">PPLT00216</a>	0-10V Dimming to 10%	120-277VAC to 1050mA, 40W, Class 2	1-1
<a href="#">PPLT00309-P</a>	0-10V Dimming to 0.1%	120-277VAC to 1050mA, 50W, Class 2	1-1
<a href="#">PPLT00467-P</a>	0-10V Dimming to 1.0%	120-277VAC to 1050mA, 50W, Class 2	1-1
<a href="#">PPLT00587-P</a>	0-10V Dimming to 1.0%	<b>347VAC</b> to 1050mA, 55W, Class 2 ( <i>CANADA only</i> )	1-1

### Suggested Lutron Compatible

Part Number	Option	Lutron SKU	Dim Range	Description	Input/Output	# of Fixtures
<a href="#">PPLT00621</a>	L3DAE / L3DA3W	L3DA	100%-1%	Hi-Lume™ 1% EcoSystem™ or 1% 3-Wire LED Driver	120-277VAC to 1050mA, 40W, Class 2	1-1

For other power supply options consult factory.

## FIXTURE DIMENSIONS



Job Name/Date:

Fixture Type Designation: