



INSTRUCTIONS PERTAINING TO RISK OF FIRE OR INJURY TO PERSONS. READ ALL INSTRUCTIONS. IMPORTANT SAFETY INSTRUCTIONS. SAVE THESE INSTRUCTIONS.

DANGER - RISK OF SHOCK - DISCONNECT POWER BEFORE INSTALLATION! Please read all instructions before installation.

- Keep these instructions for future reference.
- Must be installed by a qualified electrician in accordance with national and local standards. Designplan is not responsible for fixtures installed without regard to these standards.
- Unauthorized alterations or tampering of product voids warranty.
- The main power connection must be in accordance with local electrical codes.
- Suitable for OUTDOOR applications.



IP65

ATTENTION: For Wall/Ceiling - It is the contractor's responsibility to caulk around all the edges between the fixture and the mounting surface to satisfy wet label requirements.

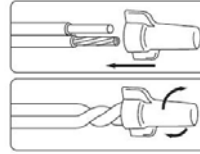
Maintenance

Scheduled maintenance must be carried out once a year on all lighting devices, regardless of appliance class and type of use. It must include the following operations:

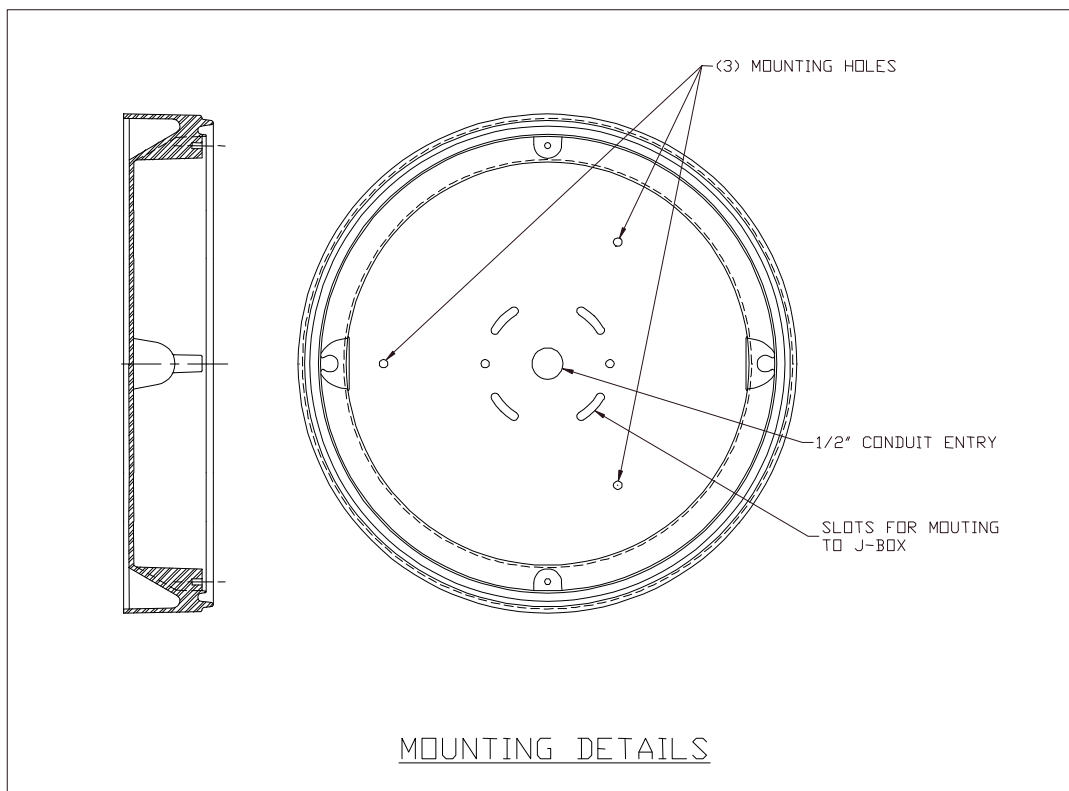
- Periodically clean fixtures to remove dirt from gratings and screw heads.
- Check tightness of screws on various parts of the device.
- Check that all cable glands and cables are intact and tight. Check that the glass or plastic lens is intact, and replace it if broken or damaged.
- The internal components such as the ballast, driver, washers and screws must not show clear signs of oxidation or rust. Clear traces of rust and oxidation will indicate the presence of water inside the device.
- In the case of damage, the components must be replaced by original components or spare parts.

Fixture Installation

Use gel-filled waterproof wire-nuts for wire connections.



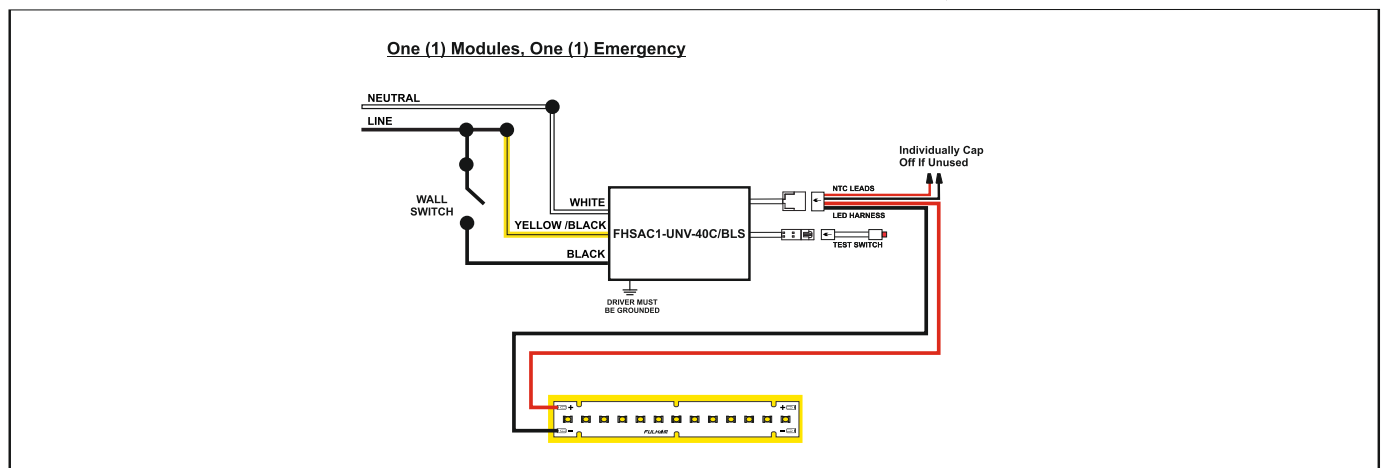
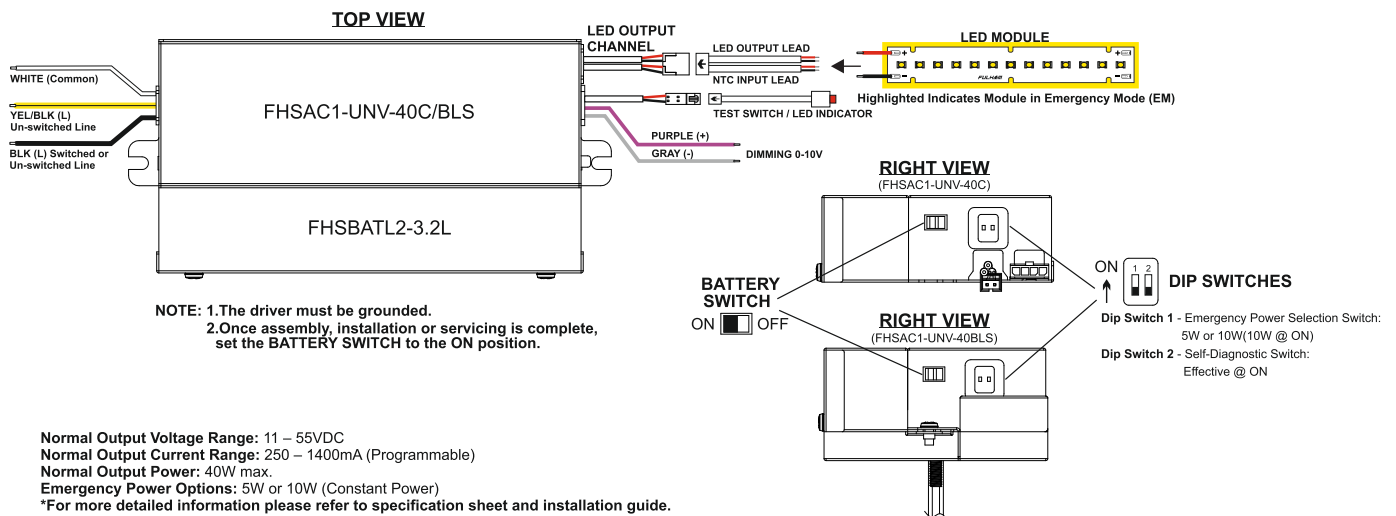
1. The lighting fixture comes fully assembled.
2. Remove grill, lens, secondary lens and tray assembly then connect the body to a standard outlet box. Designplan recommends that the contractor utilize the three mounting holes in the back of the body to mount to the structure as well. It is the contractor's responsibility to supply proper anchorage based on job conditions. It is also the contractor's responsibility to caulk all edges in between the fixture and the mounting surface in order to satisfy wet label requirements.
3. Unplug the amp connector. Make supply lead connections in the body using the female amp connector. **CONNECT GREEN WIRE TO "GROUND," CONNECT BLACK FIXTURE WIRE TO BLACK BUILDING WIRE AND CONNECT WHITE FIXTURE WIRE TO WHITE BUILDING WIRE.** The fixture is also set up for optional 0-10V dimming. If dimming is not required, please terminate each with a wire nut of similar (not supplied). Dimming: **ORANGE/GRAY** wire is negative. The **RED/PURPLE** wire is positive. Plug amp connector back together.
4. Secure the led tray inside the body.
5. Install secondary lens.
6. Affix the grill and lens over the housing.



WIRE DIAGRAMS:



FHSAC1-UNV-40C/BLS WIRING DIAGRAMS



DUE TO A PROGRAM OF CONTINUOUS IMPROVEMENT, FULHAM Co., INC RESERVES THE RIGHT TO MAKE ANY VARIATION IN DESIGN OR CONSTRUCTION TO THE EQUIPMENT DESCRIBED.
Address: 12705 South Van Ness Ave., Hawthorne, CA 90250 • Telephone: 1-323-779-2980 • Fax: 1-323-754-9060 • Website: www.fulham.com