



INSTRUCTIONS PERTAINING TO RISK OF FIRE OR INJURY TO PERSONS. READ ALL INSTRUCTIONS. IMPORTANT SAFETY INSTRUCTIONS. SAVE THESE INSTRUCTIONS.

DANGER - RISK OF SHOCK - DISCONNECT POWER BEFORE INSTALLATION! Please read all instructions before installation.

- Keep these instructions for future reference.
- Must be installed by a qualified electrician in accordance with national and local standards. Designplan is not responsible for fixtures installed without regard to these standards.
- Unauthorized alterations or tampering of product voids warranty.
- The main power connection must be in accordance with local electrical codes.
- Suitable for INDOOR applications.
- DO NOT INSTALL INSULATION WITHIN 3.0" (76 mm) OF ANY PART OF THE LUMINAIRE.



IP20 

Electrical Connections:

- LED lights must be **connected in parallel** respecting polarities.
- **CHOOSE POWER SUPPLY ACCORDINGLY.** Please consider the voltage through which fixtures are fed as well as the max power consumption.
- **Connect power only if all the fixtures are connected.**
- The power supplies MUST be installed in aerated rooms, far from heat sources. Overworking or lack of air circulation will not permit natural dissipation.
- Use only Class 2 type electronic power supply.
- Never use switches on secondary circuit.

Maintenance

Scheduled maintenance must be carried out once a year on all lighting devices, regardless of appliance class and type of use. It must include the following operations:

- Periodically clean fixtures to remove dirt from gratings and screw heads.
- Check tightness of screws on various parts of the device.
- Check that all cable glands and cables are intact and tight. Check that the glass or plastic lens is intact, and replace it if broken or damaged.
- The internal components such as the ballast, driver, washers and screws must not show clear signs of oxidation or rust. Clear traces of rust and oxidation will indicate the presence of water inside the device.
- In the case of damage, the components must be replaced by original components or spare parts.

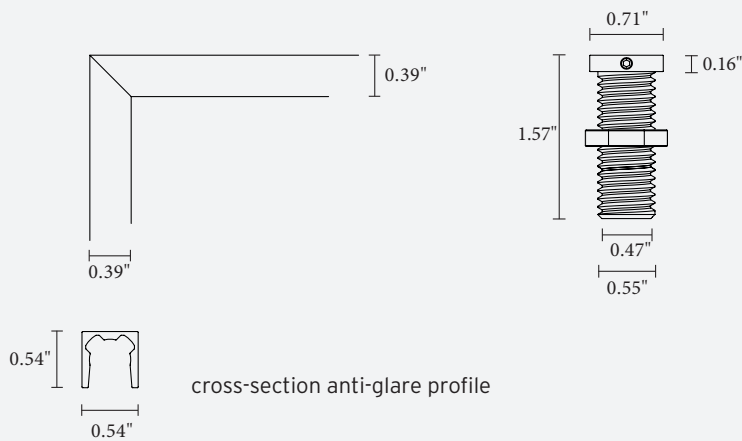
R1-T / R1-TG LIGHT BAR

15W PER 3.28", 24VDC Remote Driver

designplan®

installation instructions

dimensions



- length: individual cut from 3.94" to 118.11"
- center support recommended from 47.24" length
- standard extension max. 17.32" (max. visible length 15.75")
- can be shortened on request additional height adjustable via flange
- panel thickness 0.079" - 0.91"
- borehole \varnothing 0.57"

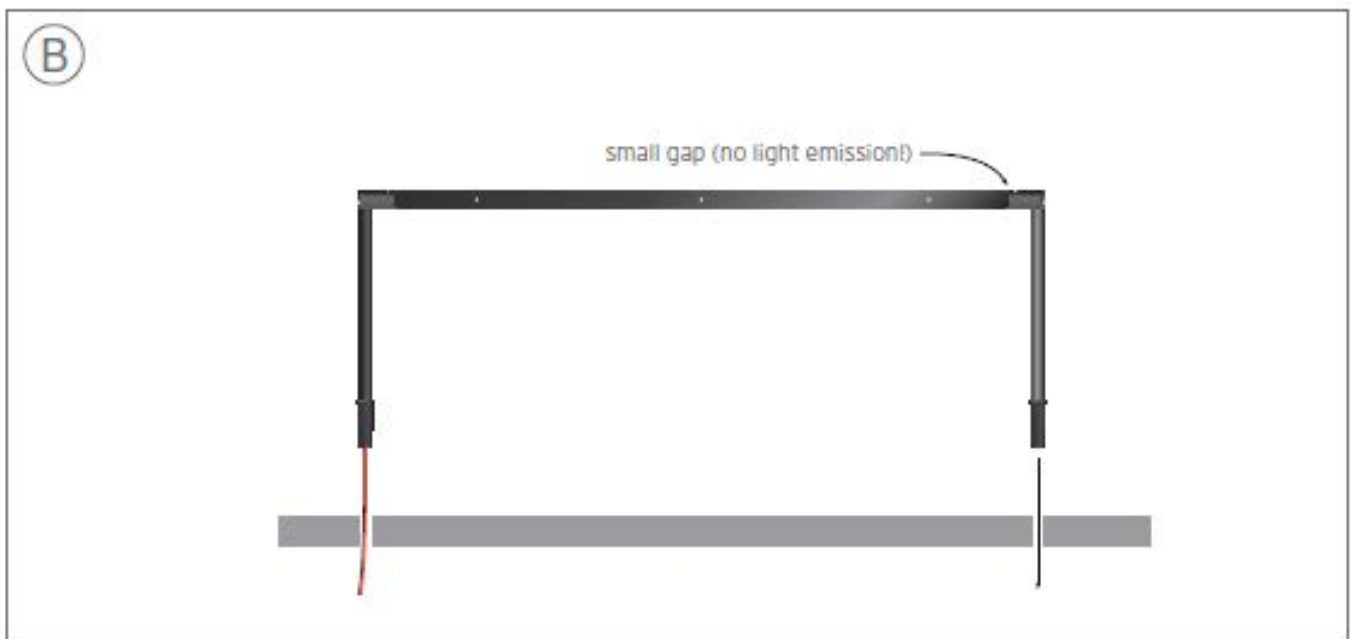


R1-T / R1-TG LIGHT BAR

15W PER 3.28", 24VDC Remote Driver

designplan®

installation instructions

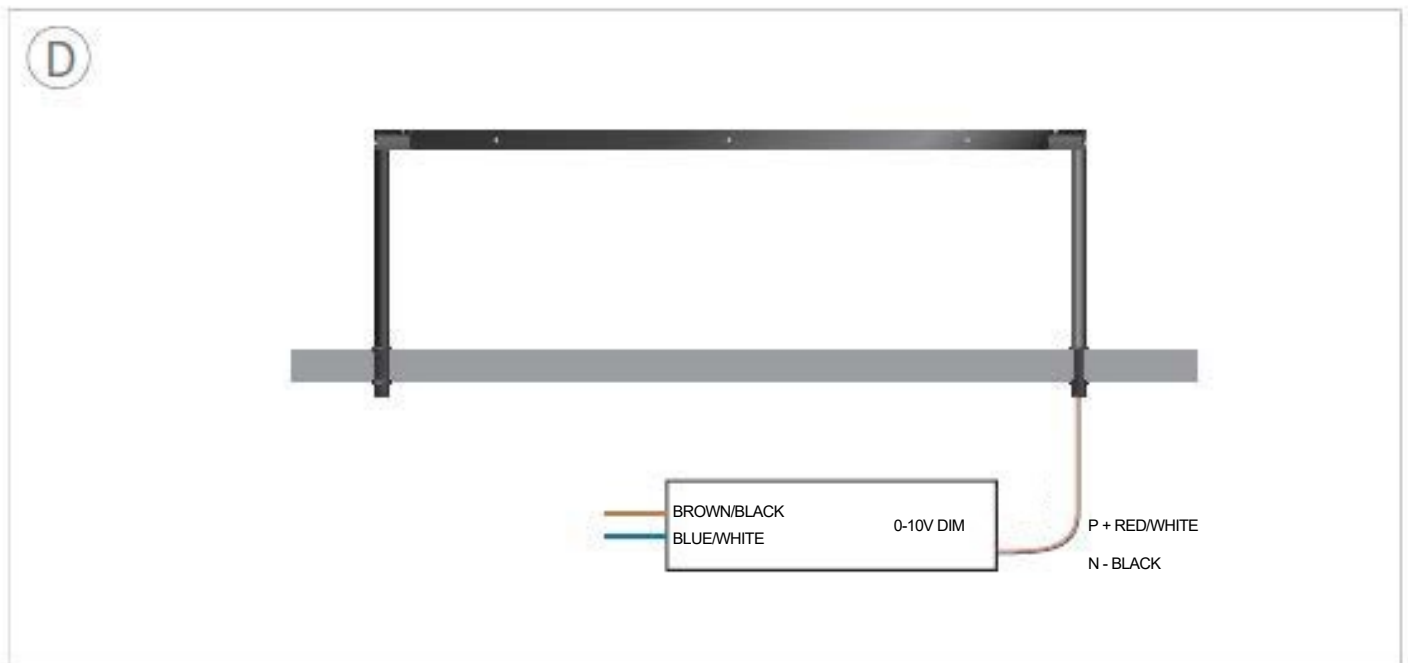


R1-T / R1-TG LIGHT BAR

15W PER 3.28", 24VDC Remote Driver

designplan®

installation instructions



R1-T / R1-TG LIGHT BAR

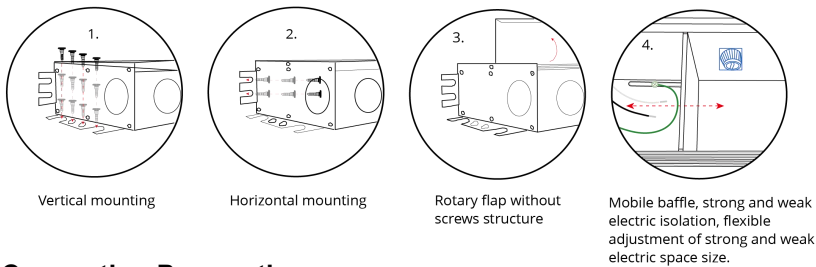
15W PER 3.28", 24VDC Remote Driver

installation instructions

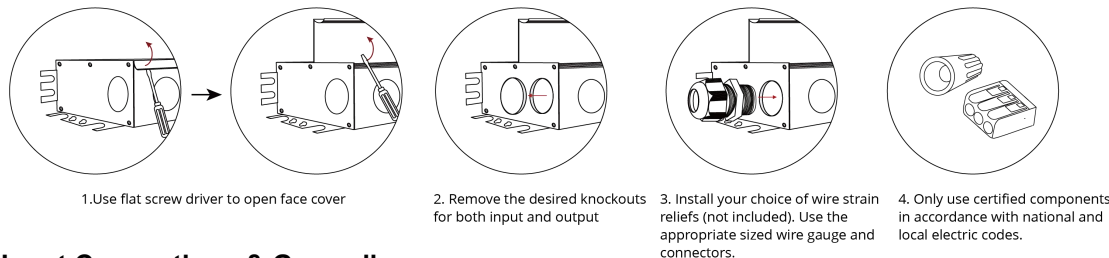
TURNABLE WHITE VERSION

Installation Mounting

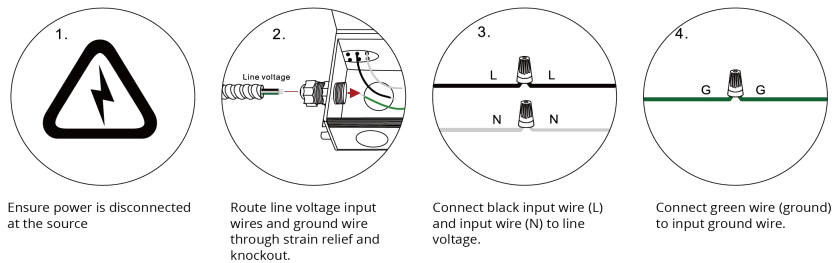
1. This driver must be installed in a well-ventilated area free from explosive gages and vapors. Airculation is essential for heat dissipation.
2. Recommended spacing between LED drivers should be a minimum of 4" (100mm).
3. Do not mount driver close to or above objects that can radiate heat. Vertical mounting is highly recommended.
4. Select an appropriate location that is able to support the weight of the product.
5. Use the mounting tabs on the left and right side of the driver to mount the product.



Connection Preparation



Input Connections & Grounding



Wire Output Connections

Dual channel CW color temperature LED strip/ tape (3 wires)

