

RDL/RHL

- 18GA Zinc coated steel housing
- Adjustable for 1/2-3/2" thick ceiling
- Concrete pour housing available
- Low copper alloy cast trim ring
- 3/16" thick UV stabilized polycarbonate lens
- Electronic ballasts for -25° cold weather start for fluorescent, HPF magnetic ballast for HID
- Zero iridescence reflector
- Triple gasketed
- Trim ring is mechanically attached to body
- Available as matching wall wash

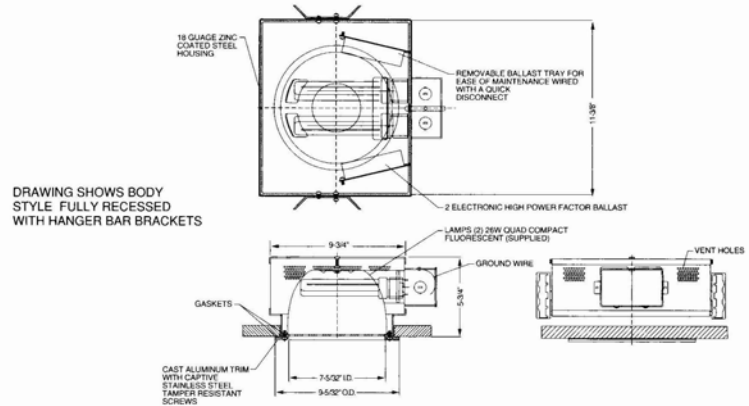


Made in the U.S.A.



US Listed; Wet Label IP65

Intertek



| Series | Lamp X | Wattage XX | Body X | Ring Finish XX | Grill X | Ballast X | Lens X | Options XX |
|-------------------|------------------------------------|--|---|--|------------|---|--|---|
| DOWNLIGHTS | 8- Fluorescent 9-HID (RHL only) | FOR RDL/RWL J3 - 2x13W QUAD 2700K J1 - 2x13W QUAD 3500K G7 - 2x18W QUAD 2700K G8 - 2x18W QUAD 3500K G2 - 2x26W QUAD 2700K E8 - 2x26W QUAD 3500K H2 - 1x32W TRIPLE 2700K H3 - 1x32W TRIPLE 3500K FOR RHL/RWH H4 - 1x42W TRIPLE 4 PIN 2700K H5 - 1x42W TRIPLE 4 PIN 3500K 10 - 2x32W TRIPLE 4 PIN 2700K J8 - 2x32W TRIPLE 4 PIN 3500K L3 - 70W MH ED17 MED CLEAR B4 - 70W MH ED17 MED COATED L6 - 70W HPS ED17 MED CLEAR B6 - 70W HPS ED17 MED COATED | 4 - Fully Recessed with Hangar Bar Brackets V - Fully Recessed for Concrete Pour | 00 - Semi Gloss Black 02 - Black Suede 03 - Grey 18 - Textured Bronze 10 - Matte Silver 11 - White Suede 17 - Granite 47 - Weathered Bronze 49 - Good Earth 80 - Weathered Copper 81 - Weathered Iron 82 - Hammered Gunmetal 83 - Metallic Silver 84 - Aluminum 87 - Chrome 89 - Zinc Grey 0M - BLK Marine Finish 1M - WH. Marine Finish 99 - Custom | 0 - None | C-120V/277V Elect. 2- 347V Elect. 9- 120V HPF MAG A- 277V HPF MAG Note: C and 2 are for fluorescent 9 and A are for HID | C- Clear X- Opal P- Clear Prismatic T- Tempered Glass F- Linear Prism Overlay Note: HID is available in T only | X- None 1- Emergency Ballast 3- 2 Circuit Wiring 8- Non Std. Screws A- DC Bayonet Socket (HID only) D- Black Oxide Screws F- Quartz Restrike (HID only) S- Spanner Head Screws |
| WALL WASH | | | | | | | | |
| RDL | | | | | | | | |
| RHL | | | | | | | | |
| RWL | | | | | | | | |
| RWH | | | | | | | | |

Job Name:

Fixture Type:

Last Modified:



© Copyright 2016 Designplan Lighting Inc.

sales@designplan.com
www.designplan.com

79 Trenton Ave
Frenchtown, NJ 08825

Tel: 908-996-7710
Fax: 908-996-7042