
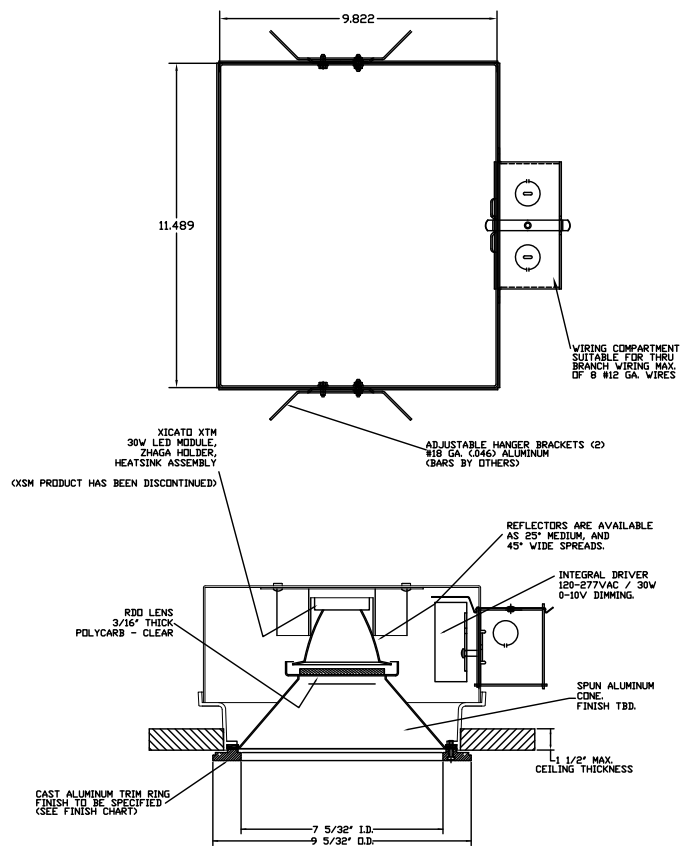


RDO

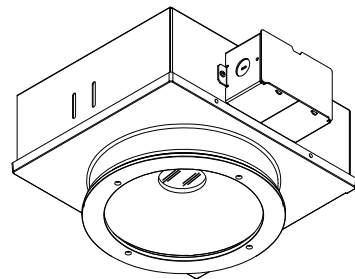
- Open bottom, sealed top of cone
- Vandal Resistant
- 3000 lm Xicato XTM LED module
- CRI > 80
- 18 Ga zinc coated steel housing
- Low copper alloy die cast trim ring
- Integral electronic power supply
- 3/16" thick polycarbonate lens
- Cone is available in white.
-  listed wet label
- Complies with LM79 and LM80



RDO



ORDERING EXAMPLE: RDO-30351V25CV0
WOULD BE AN RDO WITH 3000LUMEN, 3500K LED, CLEAR POLYCARB LENS, GLOSS WHITE CONE, WITH A MEDIUM OPTICAL REFLECTOR. TRIM FINISH IS GLOSS WHITE.



RDO

