

# RHR DOWNLIGHT

The RHR Downlight is an IP65 wet label halogen downlight suitable for steam rooms and saunas that is IC and Chicago Plenum rated. Lamp by others.



**MADE IN THE U.S.A.**

Fixture Dimensions  
(see drawing on page 2)

## TECHNICAL DATA

<b>Wattage / Input</b>	35/39W or 50W (120VAC)
<b>Power Supply</b>	None (Halogen) 120VAC E26 Medium Base Socket
<b>Construction</b>	Body: 20 Ga. Cold Rolled Steel (Powder Black Finish) Neck: Die Cast Aluminum Lens: 3/16" Thick Clear Tempered Glass
<b>CRI</b>	CRI=100
<b>Optics</b>	As per lamping (see below)
<b>Finishes</b>	5 Standard, plus 4 Marine Grade. See Below.
<b>Fixture Dimensions</b>	Ø5.58" x 13.8 l x 8.06 h (see drawing on page 2)
<b>Fixture Weight</b>	9.2 lbs
<b>IP Rating</b>	IP65
<b>Temperature Rating</b>	Tested to 90°C room ambient

## ORDERING INFORMATION

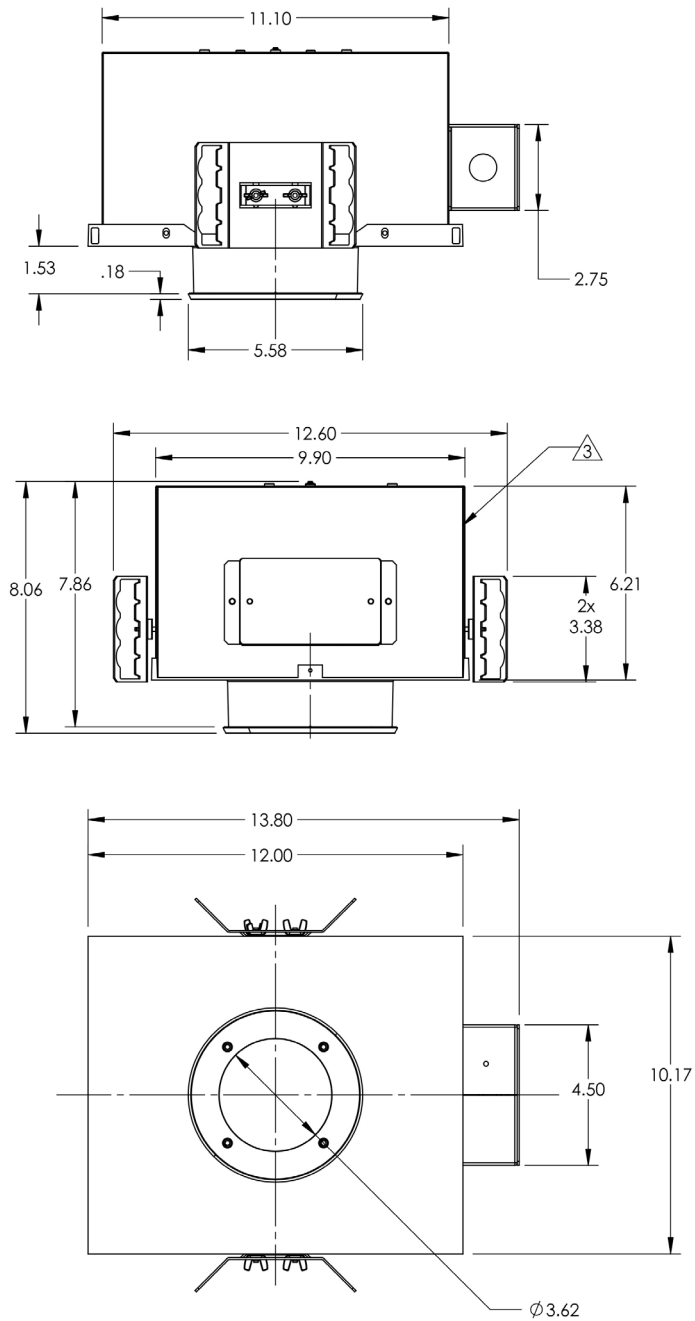
Example: RHR-6-1M-4-11-F-T-0.

RHR-6	-		-		-	F	-	T	-	
Model #	Wattage	Body	Finish	Driver	Lens	Options				
RHR-6	<b>1M</b> - 35/39W PAR20 Halogen <sup>1</sup> <b>GW</b> - 50W PAR30 Halogen <sup>1</sup> <sup>1</sup> Lamp by others.	<b>4</b> - Fully Recessed IC Rated <b>C</b> - Fully Recessed Chicago Plenum	<b>11</b> - White Suede <b>02</b> - Black Suede <b>18</b> - Tex. Bronze <b>TS</b> - Silver <i>Add prefix "M" to above colors for Marine Grade Clear Overcoat</i> <b>PN</b> - Polished Nickel <i>Marine Grade Clear Overcoat <b>NOT</b> available on Polished Nickel</i>	<b>F</b> - None <i>(Halogen)</i>	<b>T</b> - Clear Tempered Glass	<b>0</b> - None <b>8</b> - Special Screws <i>(Please specify)</i> <b>H</b> - Honeycomb Louver				

Job Name/Date:

Fixture Type Designation:

## FIXTURE DIMENSIONS



Job Name/Date:

Fixture Type Designation: