

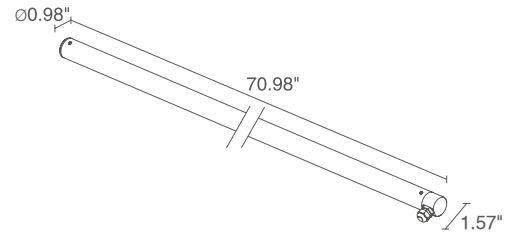
The Trevi series is a linear profile suitable for indoor, outdoor and submersible water feature installations. Available in three standard lengths as well as white or RGB light.

TECHNICAL DATA

Wattage / Input	21W (Static White - optics version) (24VDC) 32W (Static White - diffuse version) (24VDC) 37W (RGB version) (24VDC)
Power Supply	Remote, not included. See page 3.
Construction	End Caps: AISI 316L Stainless Steel Lens: Transparent Polycarbonate (Optics version) Opal Polycarbonate (Diffuse version)
CCT	2700K, 3000K, 4000K, RGB
CRI	CRI >80
BUG Rating	B1-U1-G0 (3000K, 20°x50°, 65°) B1-U1-G1 (3000K, Diffuse) B2-U1-G0 (3000K, 40°)
Delivered Lumens	1512 lm (3000K, 40°) 1728 lm (3000K, Diffuse) RGB 1197 lm: (R) 266 lm, (G) 765 lm, (B) 166 lm (Diffuse)
Efficacy	72 lm/W (3000K, 40°) 54 lm/W (3000K, Diffuse) 32 lm/W (RGB)
Optics	40°, 65°, 20°x50°, Diffuse
Finish	Stainless Steel
Fixture Dimensions	Ø0.98" x 70.98" x 1.57"
Fixture Weight	4.63 lbs.
LED Source	See LED Source Chart at Right.
Lumen Maintenance	L85, B10>50,000hrs
Color Consistency	3-Step MacAdam
Operating Temp.	-4°F to +113°F
IP Rating	IP68
Impact Rating	IK10



Fixture Dimensions



	LED SOURCE
Optics Version	18 power LEDs, o.c. spacing 3.94"
Diffuse Version	246 mid-power LEDs
RGB Version	138 low-power, full-color LEDs

ORDERING INFORMATION

Example: TR1200FMA. Accessories / Power Supplies ordered separately.

			A
Model No. TR1200 (Static White)	CCT F - 2700K 5 - 3000K 9 - 4000K	Optics M - 40° L - 65° W - 20°x50° D - Diffuse (32W only)	Finish A - Stainless Steel
Model No. TR1200 (RGB)	6 - RGB	D - Diffuse	

Job Name/Date:

Fixture Type Designation:

STATIC WHITE 21W/32W - 24VDC (FOR USE WITH FOUNTAIN / WATER FEATURES)

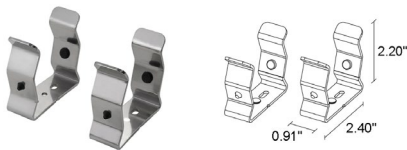
Part Number	Description	Input/Output	# of Fixtures 21W / 32W (Diffuse)	
FPV-100000024	Non-Dim	120-277VAC to 24VDC, 100W, Class 2	1-3	1-2
FPV-100100024	0-10V Dimming to 1.0%	120-277VAC to 24VDC, 100W, Class 2	1-3	1-2

RGB 37W - 24VDC (FOR USE WITH FOUNTAIN / WATER FEATURES)

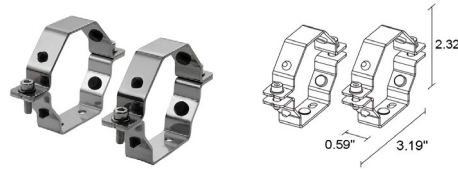
Part Number	Description	Input/Output	# of Fixtures
FPV-100EL0024	DMX / RDM (Field Addressable) / DALI	120-277VAC to 24VDC, 100W	1 - 2

For other power supply options consult factory.

ACCESSORIES - Installation (REQUIRED)



WMA04
Clips Pair



WMA05
Pair of temper-resistant clips



WMA07
Suspension Kit

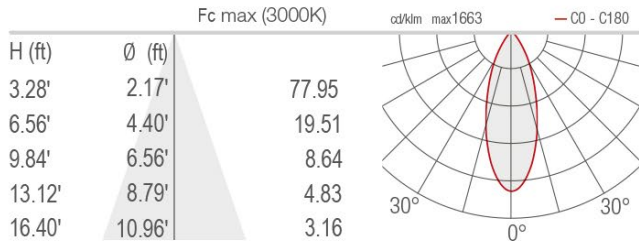
Job Name/Date:

Fixture Type Designation:

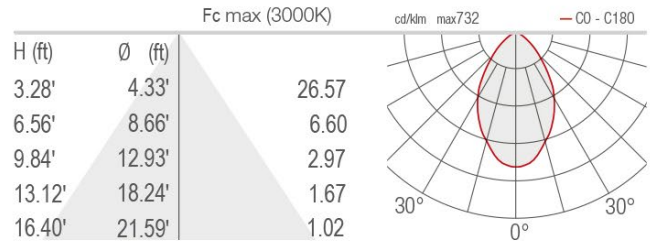
PHOTOMETRIC DATA

Note all Photometry is Trevi 1.0, 3000K

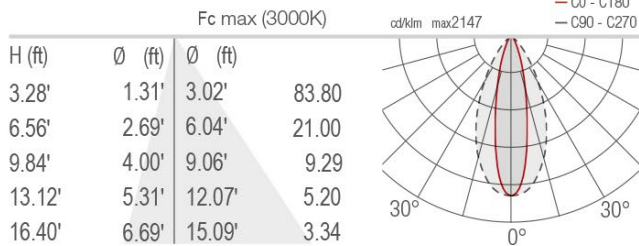
M - 40°



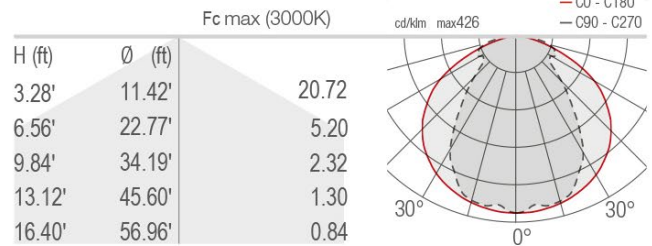
L - 65°



W - 20°x50°



D - Diffuse



Job Name/Date:

Fixture Type Designation: