

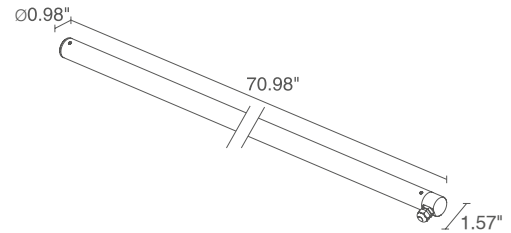
The Trevi series is a linear profile suitable for indoor, outdoor and submersible water feature installations. Available in three standard lengths as well as white or RGB light.

## TECHNICAL DATA

<b>Wattage / Input</b>	21W (Static White - optics version) (24VDC) 32W (Static White - diffuse version) (24VDC) 37W (RGB version) (24VDC)
<b>Power Supply</b>	Remote, not included. See page 3.
<b>Construction</b>	End Caps: AISI 316L Stainless Steel Lens: Transparent Polycarbonate (Optics version) Opal Polycarbonate (Diffuse version)
<b>CCT</b>	2700K, 3000K, 4000K, RGB
<b>CRI</b>	CRI >80
<b>BUG Rating</b>	B1-U1-G0 (3000K, 20°x50°, 65°) B1-U1-G1 (3000K, Diffuse) B2-U1-G0 (3000K, 40°)
<b>Delivered Lumens</b>	1512 lm (3000K, 40°) 1728 lm (3000K, Diffuse) RGB 1197 lm: (R) 266 lm, (G) 765 lm, (B) 166 lm (Diffuse)
<b>Efficacy</b>	72 lm/W (3000K, 40°) 54 lm/W (3000K, Diffuse) 32 lm/W (RGB)
<b>Optics</b>	40°, 65°, 20°x50°, Diffuse
<b>Finish</b>	Stainless Steel
<b>Fixture Dimensions</b>	Ø0.98" x 70.98" x 1.57"
<b>Fixture Weight</b>	4.63 lbs.
<b>LED Source</b>	See LED Source Chart at Right.
<b>Lumen Maintenance</b>	L85, B10>50,000hrs
<b>Color Consistency</b>	3-Step MacAdam
<b>Operating Temp.</b>	-4°F to +113°F
<b>IP Rating</b>	IP68
<b>Impact Rating</b>	IK10



Fixture Dimensions



	LED SOURCE
<b>Optics Version</b>	18 power LEDs, o.c. spacing 3.94"
<b>Diffuse Version</b>	246 mid-power LEDs
<b>RGB Version</b>	138 low-power, full-color LEDs

## ORDERING INFORMATION

*Example: TR1200FMA. Accessories / Power Supplies ordered separately.*

			<b>A</b>
<b>Model No.</b> TR1200 (Static White)	<b>CCT</b> F - 2700K 5 - 3000K 9 - 4000K	<b>Optics</b> M - 40° L - 65° W - 20°x50° D - Diffuse (32W only)	<b>Finish</b> A - Stainless Steel
<b>Model No.</b> TR1200 (RGB)	<b>6 - RGB</b>	<b>D - Diffuse</b>	

Job Name/Date:

Fixture Type Designation:

STATIC WHITE 21W/32W - 24VDC (FOR USE WITH FOUNTAIN / WATER FEATURES)

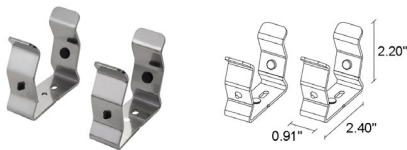
Part Number	Description	Input/Output	# of Fixtures 21W / 32W (Diffuse)	
			1-3	1-2
<a href="#">FPV-100000024</a>	Non-Dim	120-277VAC to 24VDC, 100W, Class 2	1-3	1-2
<a href="#">FPV-100100024</a>	0-10V Dimming to 1.0%	120-277VAC to 24VDC, 100W, Class 2	1-3	1-2

RGB 37W - 24VDC (FOR USE WITH FOUNTAIN / WATER FEATURES)

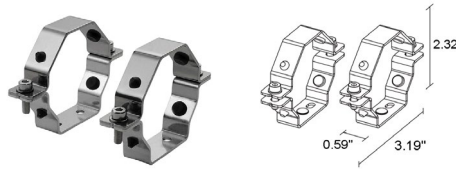
Part Number	Description	Input/Output	# of Fixtures
			1 - 2
<a href="#">FPV-100EL0024</a>	DMX / RDM (Field Addressable) / DALI	120-277VAC to 24VDC, 100W	1 - 2

For other power supply options consult factory.

**ACCESSORIES - Installation (REQUIRED)**



**WMA04**  
Clips Pair



**WMA05**  
Pair of tamper-resistant clips



**WMA07**  
Suspension Kit

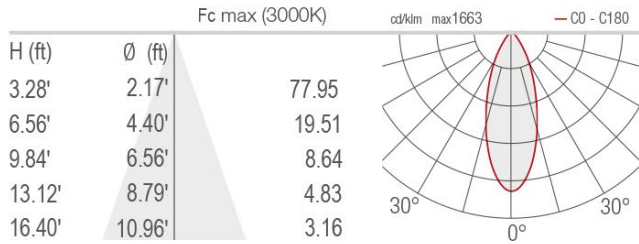
Job Name/Date:

Fixture Type Designation:

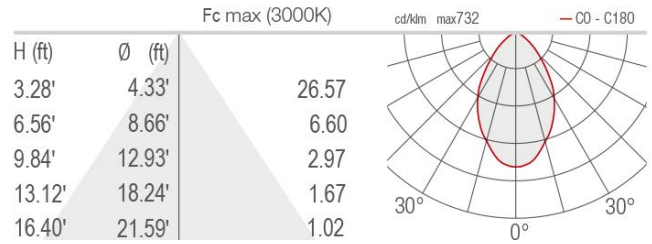
## PHOTOMETRIC DATA

Note all Photometry is Trevi 1.0, 3000K

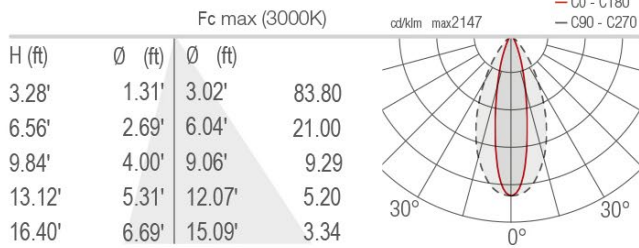
### M - 40°



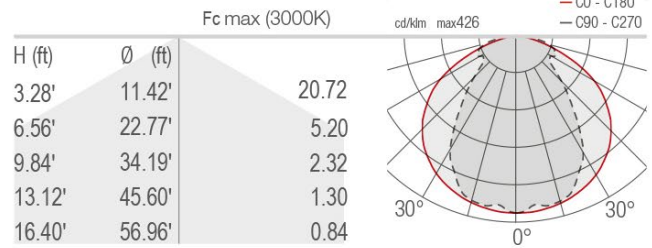
### L - 65°



### W - 20°x50°



### D - Diffuse



Job Name/Date:

Fixture Type Designation: