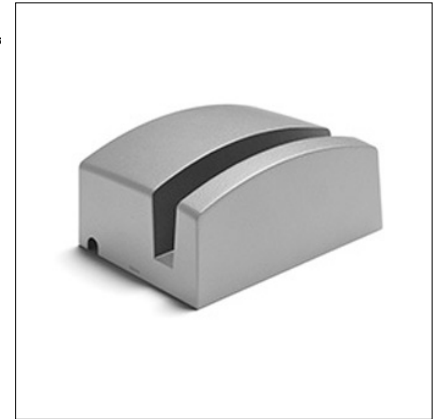


WINDOW WAVE 2.0

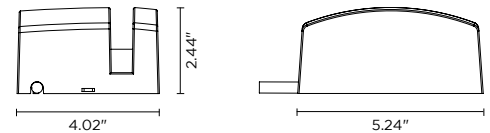
Window Wave 2.0 is a surface mounted luminaire for outdoor installation on a window sill, with asymmetric 8° x 170° “window-washer” light distribution. It is available in 2 color temperatures with 3 finish options.



TECHNICAL DATA

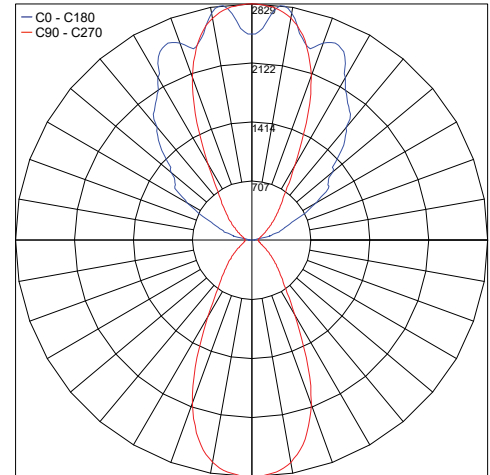
Wattage / Input	7W (120VAC)
Power Supply	Integral
Dimming	0-10V Dimming Only Available with Remote Driver - Consult Factory
Construction	Body: Die-Cast Copper-Free Aluminum Lens: Tempered Safety Glass Cable Length: 3.28'
CCT	3000K, 4000K
BUG Rating	B0-U4-G0
Delivered Lumens	582 lm (3000K)
Efficacy	83.1 lm/W
Optics	8° x 170°
Finishes	Textured Gray, Anthracite Gray (Matte Black and other colors on request)
Fixture Dimensions	4.02" l x 5.24" w x 2.44" h
LED Source	1 x CREE "XHP35" LED
Fixture Weight	2.2 lbs
IP Rating	IP65
IK Rating	IK08

Fixture Dimensions



PHOTOMETRIC DATA

Maximum Candela = 2828.8



PHOTOMETRIC FILENAME: WINDOW WAVE 2.0 401102P.IES

ORDERING INFORMATION

Example: 401102P-30K-8x170-TG

401102P	-		-	8x170	-	
Model No.		CCT		Optic		Finish
401102P		30K - 3000K 40K - 4000K		8x170 - 8°x170°		TG - Textured Gray AG - Anthracite Gray

Job Name/Date:

Fixture Type Designation: