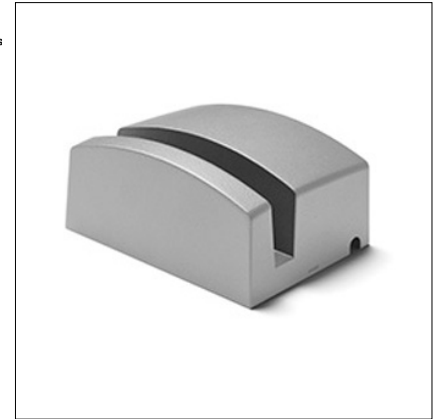


# WINDOW WAVE 2.0 RGBW

Window Wave 2.0 RGBW is an RGBW, surface mounted luminaire for outdoor installation on a window sill, with asymmetric 8° x 170° “window-washer” light distribution. It is available with 3 finish options.

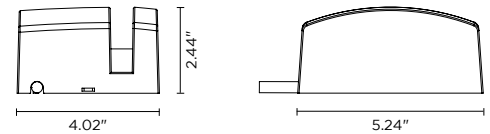
**Requires DMX controller to control color (provided by others).**



## TECHNICAL DATA

|                           |  |
|---------------------------|--|
| <b>Wattage / Input</b>    | 4.5W (24VDC)   |
| <b>Power Supply</b>       | Remote, not included. See page 2.  |
| <b>Construction</b>       | Body: Die-Cast Copper-Free Aluminum<br>Lens: Tempered Glass<br>Cable Length: 3.28' |
| <b>CCT</b>                | RGBW - DMX Decoder Built Into Fixture  |
| <b>Delivered Lumens</b>   | 160 lm (3000K)   |
| <b>Efficacy</b>           | 35.6 lm/W  |
| <b>Optics</b>             | 8° x 170°  |
| <b>Finishes</b>           | Textured Gray, Anthracite Gray<br>(Matte Black and other colors on request)        |
| <b>Fixture Dimensions</b> | 4.02" l x 5.24" w x 2.44" h  |
| <b>LED Source</b>         | 1 CREE "XML" COLOR RGBW LED  |
| <b>Fixture Weight</b>     | 2.2 lbs  |
| <b>IP Rating</b>          | IP65   |
| <b>IK Rating</b>          | IK08   |

Fixture Dimensions



## ORDERING INFORMATION

Example: 401102RGBWP-RGBW-8x170-TG

| 401102RGBWP | -           |                 | -  | 8x170 | - |  |
|-------------|-------------|-----------------|--|-------|---|--|
| Model No.   | CCT         | Optic           | Finish                                     |       |   |  |
| 401102RGBWP | RGBW - RGBW | 8x170 - 8°x170° | TG - Textured Gray<br>AG - Anthracite Gray |       |   |  |

Job Name/Date:

Fixture Type Designation:

## SUGGESTED POWER SUPPLIES

24VDC

| Part Number               | Description | Input/Output                            | # of Fixtures |
|---------------------------|-------------|---|---------------|
| <a href="#">PPLT00056</a> | Non-Dim     | 120-277VAC to 24VDC, 26W, Class 2, IP66 | 1-4           |

*For other power supply options consult factory.*

## PHOTOMETRIC DATA

*Coming Soon*

*Job Name/Date:*

*Fixture Type Designation:*