

# BEAM 2.1

The Beam 2 Series is an in-grade or wall mounted accent or pathway light. Available in a rounded dome or truncated pyramid design with single or double radial beam optics with the choice of white or blue light and 3 different finishes.

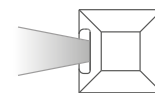
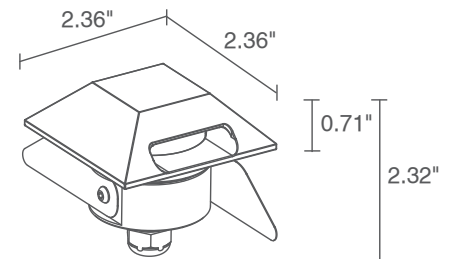
## TECHNICAL DATA

<b>Wattage / Input</b>	2W (Single Beam: 500mA, Double Beam: 350mA)
<b>Power Supply</b>	Remote, not included. See page 2.
<b>Construction</b>	Body: Stainless Steel or Anodized Aluminum Trim: Stainless Steel or Aluminum Lens: Sandblasted Plexiglass
<b>CCT</b>	2700K, 3000K, 4000K, 5000K, Blue
<b>CRI</b>	>80
<b>Delivered Lumens</b>	Single Beam: 70 lm (3000K, 500mA) Double Beam: 51 lm (3000K, 350mA) per beam
<b>Efficacy</b>	Single Beam: 35 lm/W (3000K, 500mA) Double Beam: 25.5 lm/W (3000K, 350mA) per beam
<b>Optics</b>	Radial
<b>Finishes</b>	Stainless Steel, Grey, Anthracite, Custom RAL
<b>Fixture Dimensions</b>	2.36" x 2.36" x 2.32"
<b>Cut-out Size</b>	Ø1.77" (for wall installations)
<b>Fixture Weight</b>	1.04 lbs Stainless Steel 0.55 lbs Grey Aluminum
<b>LED Source</b>	Single Beam: 1 Power LED Double Beam: 2 Power LEDs
<b>Lumen Maintenance</b>	L80, B10 >50,000hrs (Ta 25°C)
<b>Color Consistency</b>	1/4 ANSI BIN
<b>Operating Temp.</b>	-4°F to +113°F
<b>IP Rating</b>	IP67
<b>IK Rating</b>	IK09

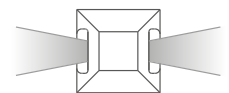


Cut-out Dimension for wall installations = Ø1.77"

Fixture Dimensions



Single Beam



Double Beam

## ORDERING INFORMATION

Example: CD20125DAI or CD20125DAI-2. Accessories and Power Supplies ordered separately.

Model No.	CCT	Optics	Finish	Cable Length
CD2112 (Single Beam)	F - 2700K	D - Radial	AI - Stainless Steel	4.92' standard
CD2121 (Double Beam)	5 - 3000K		AF - Grey	1 - 16.40'
	9 - 4000K		AH - Anthracite	2 - 32.81'
	0 - 5000K		C - Custom	3 - 49.21'
	1 - Blue		(consult factory for "C")	4 - 65.62'

Job Name/Date:

Fixture Type Designation:

## SUGGESTED POWER SUPPLIES

### 500mA - Single Beam

Part Number	Description	Input/Output	# of Fixtures
<a href="#">PPLT00469</a>	Phase Dim (120V only)	120VAC to 500mA, 14W, Class 2	4-7
<a href="#">PPLT00262</a>	Leading / Trailing-Edge Dimming to 10% (120V only)	120-277VAC to 500mA, 32W, Class 2	8-14
<a href="#">PPLT00467-P</a>	0-10V Dimming to 1.0%	120-277VAC to 500mA, 50W, Class 2	1-16
<a href="#">PPLT00538-P</a>	0-10V Dimming to 0.1%	120-277VAC to 500mA, 100W, Class 2	1-48

### Suggested Lutron Compatible - Single Beam

Part Number	Option	Lutron SKU	Dim Range	Description	Input/Output	# of Fixtures
<a href="#">PPLT00249</a>	LTEA2W	LTEA	100%-1%	Hi-Lume™ 1% 2-Wire LED Driver (120V forward phase only)	120VAC to 500mA, 10W, Class 2	4-5
<a href="#">PPLT00259</a>	L3DAE / L3DA3W	L3DA	100%-1%	Hi-Lume™ 1% EcoSystem™ OR 1% 3-Wire LED Driver	120-277VAC to 500mA, 10W, Class 2	4-5
<a href="#">PPLT00195</a>	L3DAE / L3DA3W	L3DA	100%-1%	Hi-Lume™ 1% EcoSystem™ OR 1% 3-Wire LED Driver	120-277VAC to 500mA, 19W, Class 2	6-9
<a href="#">PPLT00180</a>	L3DAE / L3DA3W	L3DA	100%-1%	Hi-Lume™ 1% EcoSystem™ OR 1% 3-Wire LED Driver	120-277VAC to 500mA, 27W, Class 2	12-13
<a href="#">PPLT00250</a>	LTEA2W	LTEA	100%-1%	Hi-Lume™ 1% 2-Wire LED Driver (120V forward phase only)	120VAC to 500mA, 27W, Class 2	12-13

### 350mA - Double Beam

Part Number	Description	Input/Output	# of Fixtures
<a href="#">PPLT00496</a>	Phase Dim (120V only)	120VAC to 350mA, 12W, Class 2	2-4
<a href="#">PPLT00263</a>	Leading / Trailing-Edge Dimming to 10% (120V only)	120-277VAC to 350mA, 32W, Class 2	4-7
<a href="#">PPLT00538-P</a>	0-10V Dimming to 0.1%	120-277VAC to 350mA, 100W, Class 2	1-32

### Lutron Compatible - Double Beam

Part Number	Option	Lutron SKU	Dim Range	Description	Input/Output	# of Fixtures
<a href="#">PPLT00252</a>	LTEA2W	LTEA	100%-1%	Hi-Lume™ 1% 2-Wire LED Driver (120V forward phase only)	120VAC to 350mA, 7W, Class 2	2-2
<a href="#">PPLT00247</a>	L3DAE / L3DA3W	L3DA	100%-1%	Hi-Lume™ 1% EcoSystem™ OR 1% 3-Wire LED Driver	120-277VAC to 350mA, 7W, Class 2	2-2
<a href="#">PPLT00516</a>	L3DAE / L3DA3W	L3DA	100%-1%	Hi-Lume™ 1% EcoSystem™ OR 1% 3-Wire LED Driver	120-277VAC to 350mA, 13W, Class 2	3-5
<a href="#">PPLT00271</a>	LTEA2W	LTEA	100%-1%	Hi-Lume™ 1% 2-Wire LED Driver (120V forward phase only)	120VAC to 350mA, 13W, Class 2	3-5
<a href="#">PPLT00179</a>	L3DAE / L3DA3W	L3DA	100%-1%	Hi-Lume™ 1% EcoSystem™ OR 1% 3-Wire LED Driver	120-277VAC to 350mA, 19W, Class 2	6-8
<a href="#">PPLT00220</a>	LTEA2W	LTEA	100%-1%	Hi-Lume™ 1% 2-Wire LED Driver (120V forward phase only)	120VAC to 350mA, 19W, Class 2	6-8

For other power supply options consult factory.

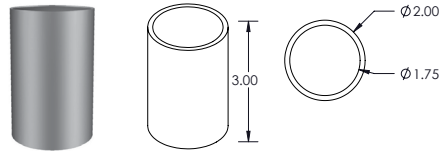
Job Name/Date:

Fixture Type Designation:

## ACCESSORIES - Installation



**WC1501**  
Outer Casing  
For in-grade use



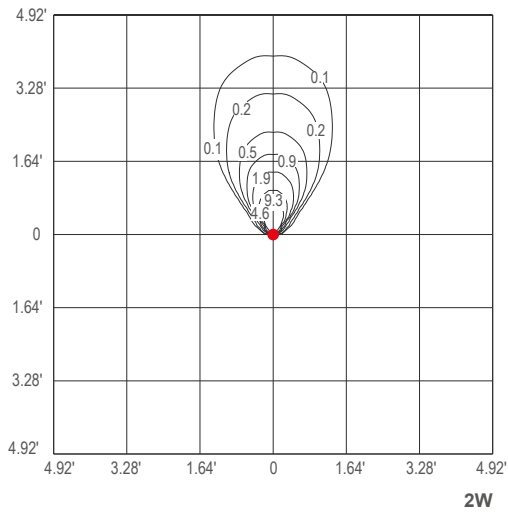
**PPMP03113**  
Core Drilled  
Application Sleeve

## PHOTOMETRIC DATA

Note all Photometry is 3000K

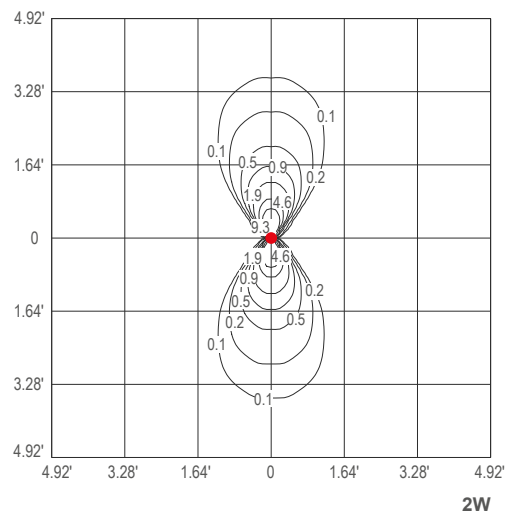
### D - Radial single beam

Isofc (3000K)



### D - Radial double beam

Isofc (3000K)



Job Name/Date:

Fixture Type Designation: