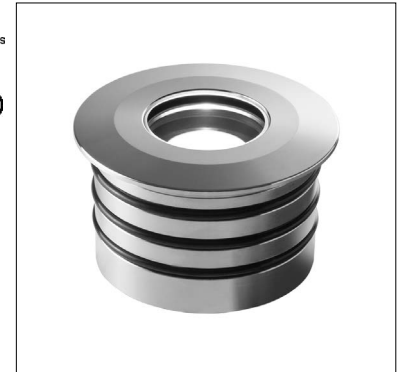


BRIGHT 3.0 316L

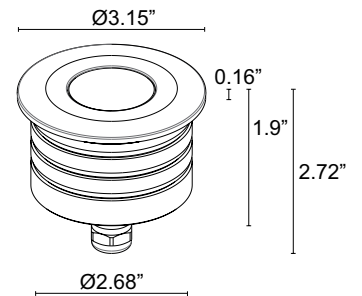
The Bright 3.0 316L recessed uplight is ideal for underwater use including salt water. The 7W and RGB versions are for use both above and below water. The 9W version is for use underwater ONLY. Available in Static White or RGB (5W only).

TECHNICAL DATA

Wattage / Input	7W, 9W (24VDC); 5W RGB (500mA)
Power Supply	Remote, not included. See page 2.
Construction	Body and Trim: AISI 316L Stainless Steel Lens: 0.39" Tempered, Transparent Extra-Clear Glass Cable Length: 16.4'
CCT	White: 2700K, 3000K, 4000K; RGB
CRI	CRI>80
Delivered Lumens	463 lm (3000K, 34°, 7W), 602 lm (3000K, 34°, 9W) RGB: 191 lm: (R) 70 lm (G) 90 lm (B) 31 lm (500mA, 34°)
Efficacy	66.1 lm/W (3000K, 34°, 7W) 66.9 lm/W (3000K, 34°, 9W) 38.2 lm/W (RGB)
Optics	White: 11°, 34°, 45°, 68°, 13°x52° RGB: 20°, 34°, 45°, 21°x42°
Fixture Dimensions	Ø3.15" x 2.72" h
Fixture Weight	2.54 lbs
LED Source	White: 1 High Intensity Power LED RGB: 3 Power LEDs
Lumen Maintenance	L90, B10 >50,000hrs (Ta 25°C)
Color Consistency	3-Step MacAdam
Operating Temp.	-4°F to +113°F (Outdoor) +32°F to +113°F (Underwater)
IP Rating	IP68
Impact Rating	IK10



Fixture Dimensions
Ø3.15" x 2.72" h



OUTER CASING REQUIRED

ORDERING INFORMATION

Example: CW300005LI. Accessories / Power Supplies ordered separately.

			I
Model No.	CCT	Optics (White)	Trim
CW30000 - 7W	F - 2700K	S - 11° K - 68°	I - Stainless Steel
CW30010 - 9W	5 - 3000K	M - 34° W - 13°x52°	
	9 - 4000K	L - 45°	
Model No.	CCT	Optics (RGB)	
CW3032 - 5W	6 - RGB	S - 20° L - 45°	
		M - 34° W - 21°x42°	

Job Name/Date:

Fixture Type Designation:

SUGGESTED POWER SUPPLIES

24VDC - FOR USE WITH FOUNTAIN / WATER FEATURES

Part Number	Description	Input/Output	# of Fixtures	
			7W	9W
FPV-100000024	Non-Dim	120-277VAC to 24VDC, 100W, Class 2	1-11	1-8
FPV-100100024	0-10V Dimming to 1.0%	120-277VAC to 24VDC, 100W, Class 2	1-11	1-8
FPV-100EL0024	DMX / RDM (Field Addressable) / DALI	120-277VAC to 24VDC, 100W, Class 2	1-11	1-8

500mA RGB - FOR USE WITH FOUNTAIN / WATER FEATURES

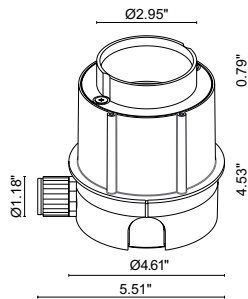
Part Number	Description	Input/Output	# of Fixtures
			5W
FPC-100EL0500	DMX / RDM (Field Addressable) / DALI	120-277VAC to 500mA, 100W, Class 2	1-6

For other power supply options consult factory.

ACCESSORIES - Installation



WC5004
Outer Casing
REQUIRED



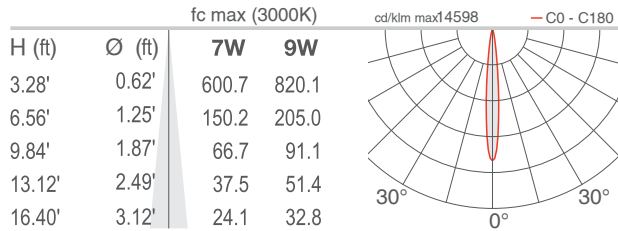
Job Name/Date:

Fixture Type Designation:

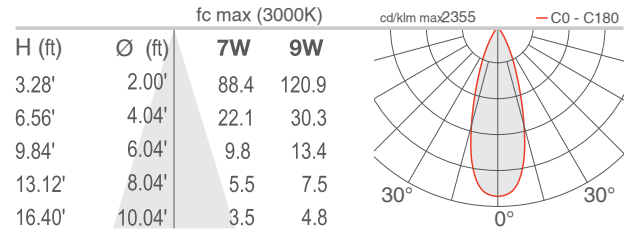
PHOTOMETRIC DATA

Note all Photometry is 3000K

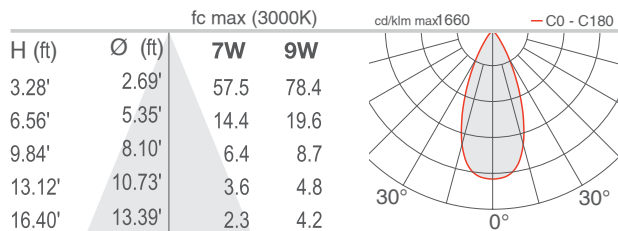
S - 11°



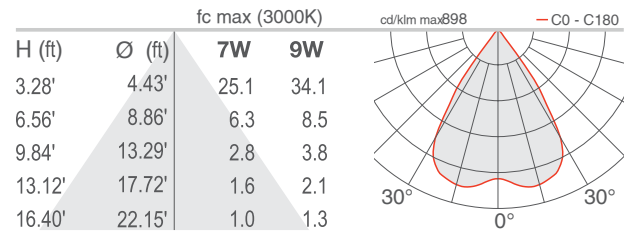
M - 34°



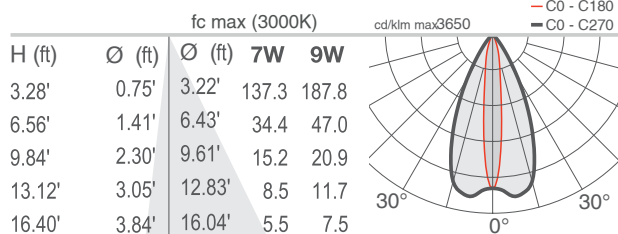
L - 45°



K - 68°



W - 13°x52°



Job Name/Date:

Fixture Type Designation: