

# CAMEO 1.1

The Cameo 1.1 is a small adjustable recessed downlight for indoor applications. With  $\pm 20^\circ$  tiltable optics and  $360^\circ$  rotation, the fixture is ideal for tight plenums, false ceilings and niches in plasterboard.

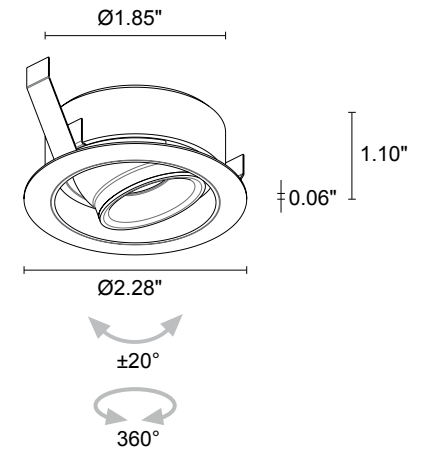


## TECHNICAL DATA

<b>Wattage / Input</b>	1.5W (500mA)
<b>Power Supply</b>	Remote, not included. See page 2.
<b>Construction</b>	Body/Trim: Aluminum Alloy EN AW 6026 Cable Length: 4.92'
<b>CCT</b>	2700K, 3000K, 4000K
<b>CRI</b>	>90
<b>Delivered Lumens</b>	144 lm (3000K, 29°)
<b>Efficacy</b>	96 lm/W (3000K, 29°)
<b>Optics</b>	5 Standard, tiltable $\pm 20^\circ$ (see below)
<b>Finishes</b>	White, Black, Custom RAL
<b>Fixture Dimensions</b>	$\varnothing 2.28"$ x 1.10" h
<b>Cut-out Size</b>	$\varnothing 2.13"$ (for ceiling installations)
<b>Fixture Weight</b>	0.15 lbs
<b>LED Source</b>	1 Power LED
<b>Lumen Maintenance</b>	L90, B10 >50,000hrs (Ta 25°C)
<b>Color Consistency</b>	1/4 ANSI BIN
<b>Operating Temp.</b>	32°F to +113°F
<b>IP Rating</b>	IP40
<b>IK Rating</b>	-

Cutout Dimensions for ceiling installations =  $\varnothing 2.13"$

Fixture Dimensions



## ORDERING INFORMATION

Example: CM1120100050ME. Power Supplies / Accessories ordered separately.

CM11201000			
Model No.	CCT	Optics	Finish
CM11201000	F0 - 2700K 50 - 3000K 90 - 4000K	S - 17° tiltable $\pm 20^\circ$ M - 29° tiltable $\pm 20^\circ$ P - 48° sharp tiltable $\pm 20^\circ$ L - 52° tiltable $\pm 20^\circ$ W - 16°x34° tiltable $\pm 20^\circ$	E - White N - Black C - Custom RAL (Consult factory for "C")

Job Name/Date:

Fixture Type Designation:

## SUGGESTED POWER SUPPLIES

500mA

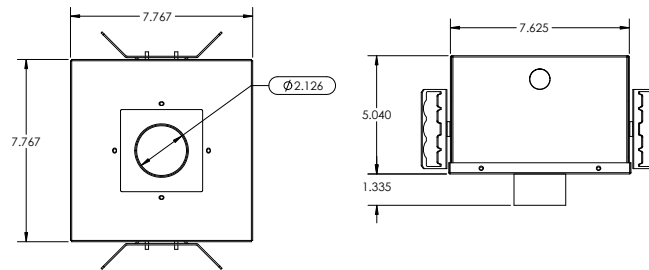
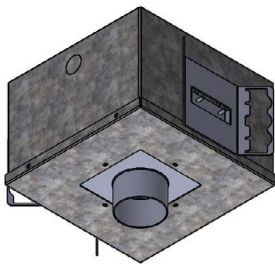
Part Number	Description	Input/Output	# of Fixtures
<a href="#">PPLT00497</a>	Phase Dim (120V only)	120VAC to 500mA, 12W, Class 2	3-6
<a href="#">PPLT00467-P</a>	0-10V Dimming to 1%	120-277VAC to 500mA, 50W, Class 2	1-15
<a href="#">PPLT00538-P</a>	0-10V Dimming to 0.1%	120-277VAC to 500mA, 100W, Class 2	1-60

## Suggested Lutron Compatible

Part Number	Option	Lutron SKU	Dim Range	Description	Input/Output	# of Fixtures
<a href="#">PPLT00249</a>	LTEA2W	LTEA	100%-1%	Hi-Lume™ 1% 2-Wire LED Driver (120V forward phase only)	120VAC to 500mA, 10W, Class 2	4-5
<a href="#">PPLT00259</a>	L3DAE / L3DA3W	L3DA	100%-1%	Hi-Lume™ 1% EcoSystem™ / 3-Wire LED Driver	120-277VAC to 500mA, 10W, Class 2	4-5
<a href="#">PPLT00195</a>	L3DAE / L3DA3W	L3DA	100%-1%	Hi-Lume™ 1% EcoSystem™ / 3-Wire LED Driver	120-277VAC to 500mA, 19W, Class 2	7-10
<a href="#">PPLT00180</a>	L3DAE / L3DA3W	L3DA	100%-1%	Hi-Lume™ 1% EcoSystem™ / 3-Wire LED Driver	120-277VAC to 500mA, 27W, Class 2	14-14
<a href="#">PPLT00250</a>	LTEA2W	LTEA	100%-1%	Hi-Lume™ 1% 2-Wire LED Driver (120V forward phase only)	120VAC to 500mA, 27W, Class 2	14-14

For other power supply options consult factory.

## ACCESSORIES - Installation



**AH-00008-IC** (IC Rated)

**AH-00008-CP** (Chicago Plenum Rated)

Housing for recessed installation in ceilings.

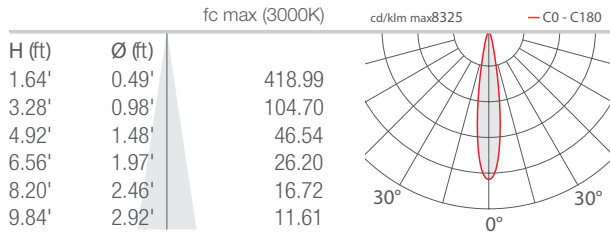
Job Name/Date:

Fixture Type Designation:

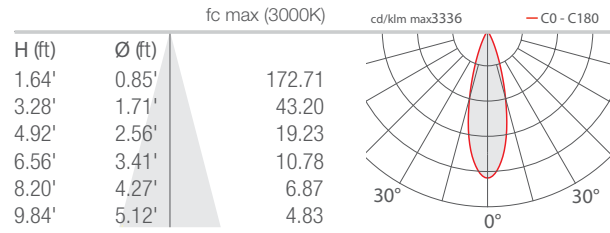
## PHOTOMETRIC DATA

Note all Photometry is 3000K

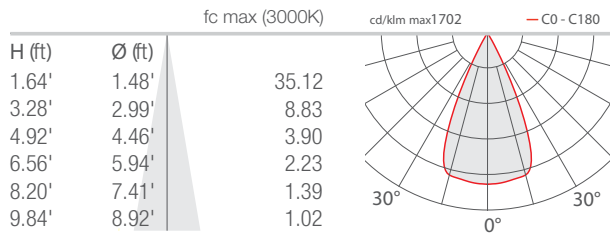
### S - 17°



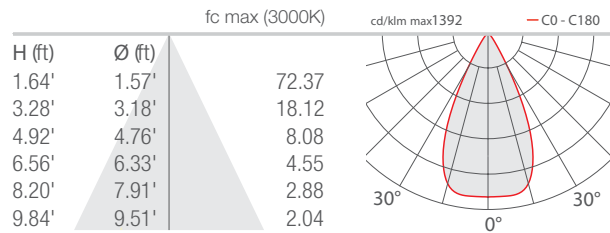
### M - 29°



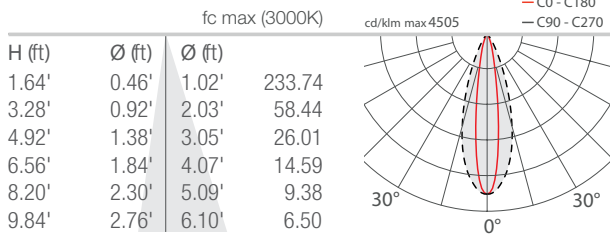
### P - 48° Sharp



### L - 52°



### W - 16°x34°



Job Name/Date:

Fixture Type Designation: