

The Cameo 2.6 is a small recessed downlight for indoor applications perfect for recessed or false ceilings and niches in plasterboard. It is offered in 3 color temperatures and 6 optical options.

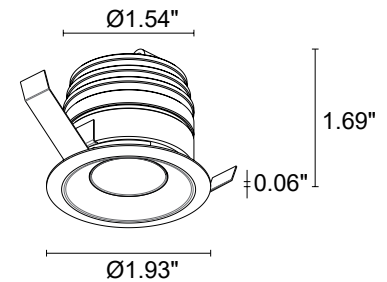


## TECHNICAL DATA

<b>Wattage / Input</b>	5W (24VDC)
<b>Power Supply</b>	Remote, not included. See page 2.
<b>Construction</b>	Body/Trim: Aluminum Alloy EN AW 6026 Cable Length: 4.92'
<b>CCT</b>	2700K, 3000K, 4000K (3500K on request, consult factory)
<b>CRI</b>	>90
<b>Delivered Lumens</b>	303 lm (3000K, 29°)
<b>Efficacy</b>	60.6 lm/W (3000K, 29°)
<b>Optics</b>	6 Standard (see below)
<b>Finishes</b>	White, Black, Custom RAL
<b>Fixture Dimensions</b>	Ø1.93" x 1.69" h
<b>Cut-out Size</b>	Ø1.77" (for ceiling installations)
<b>Fixture Weight</b>	0.33 lbs
<b>LED Source</b>	1 Power High Intensity LED
<b>Lumen Maintenance</b>	L95, B10 >50,000hrs (Ta 25°C)
<b>Color Consistency</b>	3-Step MacAdam
<b>Operating Temp.</b>	32°F to +113°F
<b>IP Rating</b>	IP40
<b>IK Rating</b>	-

Cutout Dimensions for ceiling installations = Ø1.77"

Fixture Dimensions



## ORDERING INFORMATION

Example: CM26001000F0SN. Power Supplies / Accessories ordered separately.

CM26001000			
Model No.	CCT	Optics	Finish
CM26001000	F0 - 2700K	S - 11°	E - White
	50 - 3000K	M - 17°	N - Black
	90 - 4000K	P - 19° sharp	C - Custom RAL
		L - 32°	(Consult factory for "C")
		J - 65°	
		W - 13° x 43°	

Job Name/Date:

Fixture Type Designation:

## SUGGESTED POWER SUPPLIES

24VDC

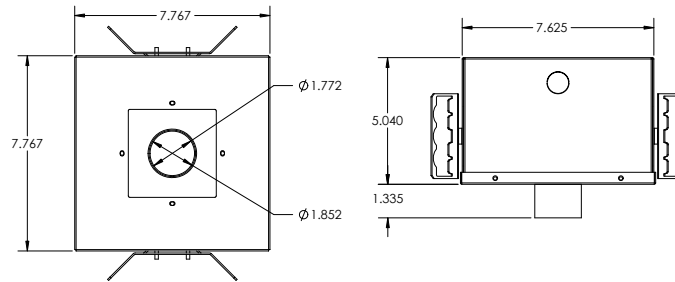
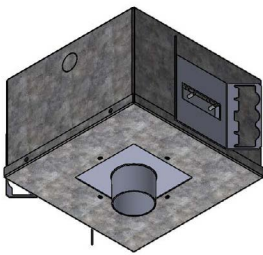
Part Number	Description	Input/Output	# of Fixtures
<a href="#">PPLT00149</a>	Non-Dim	120VAC to 24VDC, 6W, Class 2, IP65	1-1
<a href="#">PPLT00632</a>	0-10V Dimming (Dim to Off)	120-277VAC to 24VDC, 12W, Class 2	1-1
<a href="#">PPLT00481</a>	Non-Dim	120-277VAC to 24VDC, 24W, Class 2	1-3
<a href="#">PPLT00157</a>	Non-Dim	120VAC to 24VDC, 60W, Class 2	1-9
<a href="#">PPLT00599</a>	ELV / TRIAC & 0-10V Dimming (100 to 0%)	120-277VAC to 24VDC, 96W, Class 2	1-15
<a href="#">PPLT00543</a>	0-10V Dimming to 15% (-40°C / -40°F cold weather start)	120-277VAC to 24VDC, 100W, Class 2	2-16

## Suggested Lutron Compatible

Part Number	Option	Lutron SKU	Dim Range	Description	Input/Output	# of Fixtures
<a href="#">PPLT00273</a>	L3DAE / L3DA3W	L3DA	100%-1%	Hi-Lume™ 1% EcoSystem™ / 3-Wire LED Driver	120-277VAC to 24VDC, 40W, Class 2	1-6

For other power supply options consult factory.

## ACCESSORIES - Installation



**AH-00009-IC** (IC Rated)

**AH-00009-CP** (Chicago Plenum Rated)

Housing for recessed installation in ceilings.

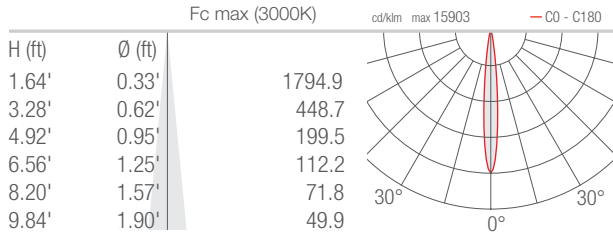
Job Name/Date:

Fixture Type Designation:

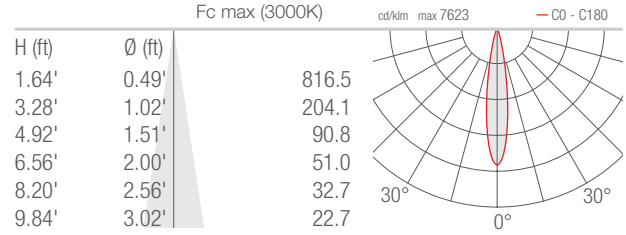
## PHOTOMETRIC DATA

Note all Photometry is 3000K

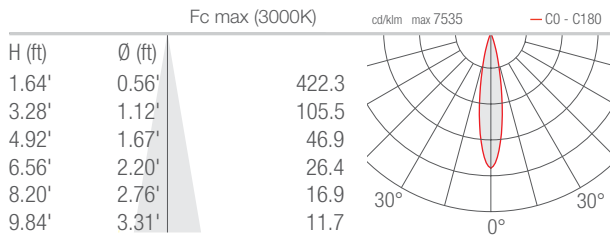
### S - 11°



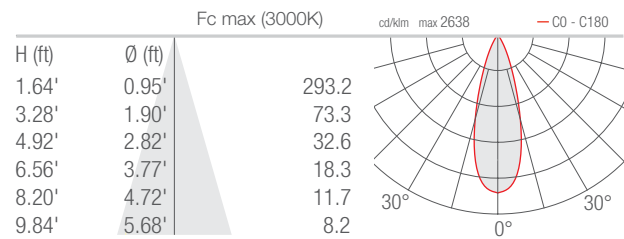
### M - 17°



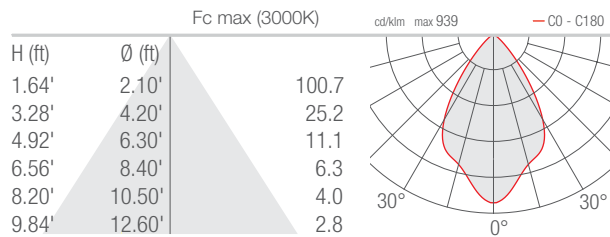
### P - 19° Sharp



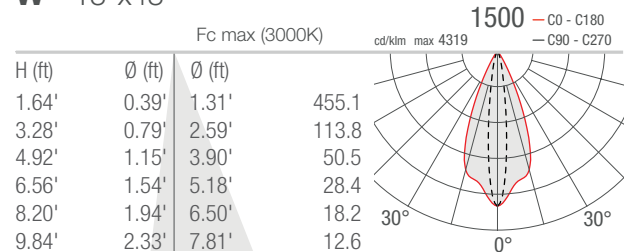
### L - 32°



### J - 65°



### W - 13°x43°



Job Name/Date:

Fixture Type Designation: