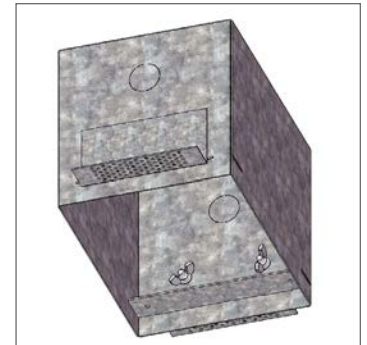




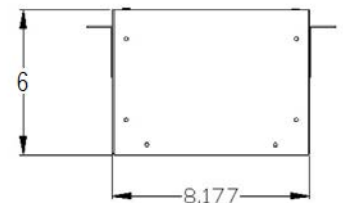
**INSTRUCTIONS PERTAINING TO RISK OF FIRE OR INJURY TO PERSONS. READ ALL INSTRUCTIONS. IMPORTANT SAFETY INSTRUCTIONS. SAVE THESE INSTRUCTIONS.**

**DANGER - RISK OF SHOCK - DISCONNECT POWER BEFORE INSTALLATION! Please read all instructions before installation.**

- Keep these instructions for future reference.
- Must be installed by a qualified electrician in accordance with national and local standards. Designplan is not responsible for fixtures installed without regard to these standards.
- Unauthorized alterations or tampering of product voids warranty.

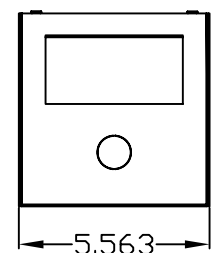


- Housing Dimensions: 8.18" L x 5.56" W x 6" H
- Housing comes with two adjustable mounting brackets secured with M4 wingnuts.
- Ceiling Cutout - 8.18" (8  $\frac{3}{16}$ ) x 5.63" (5  $\frac{5}{8}$ )
- Remove desired knockout to feed building wires through.



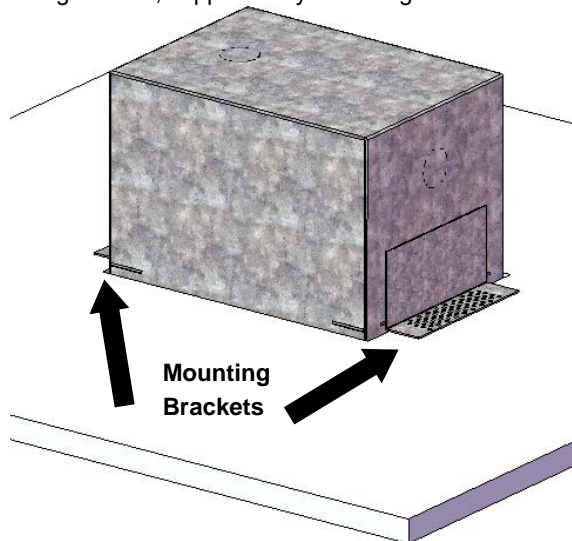
This IC Box is used for:

- Genius Square
- Genius
- Genius Dynamic white
- Genius Curve
- Genius Black
- Genius Brass



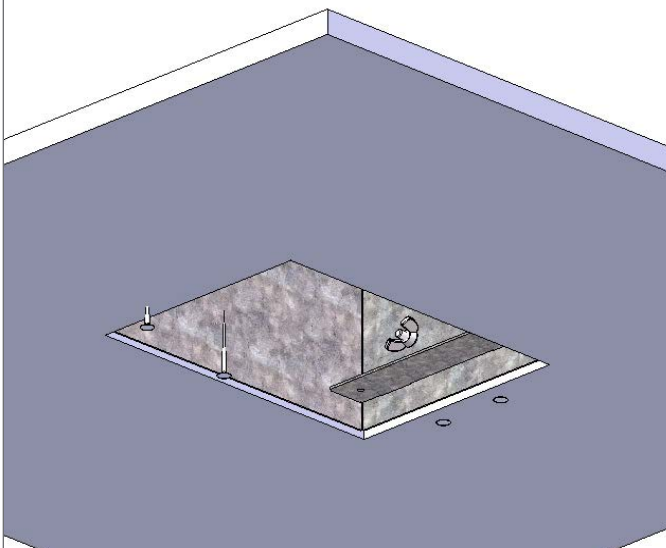
### TOP VIEW

1. Slip housing into the cutout area. Housing will sit on top of ceiling surface, supported by mounting brackets.

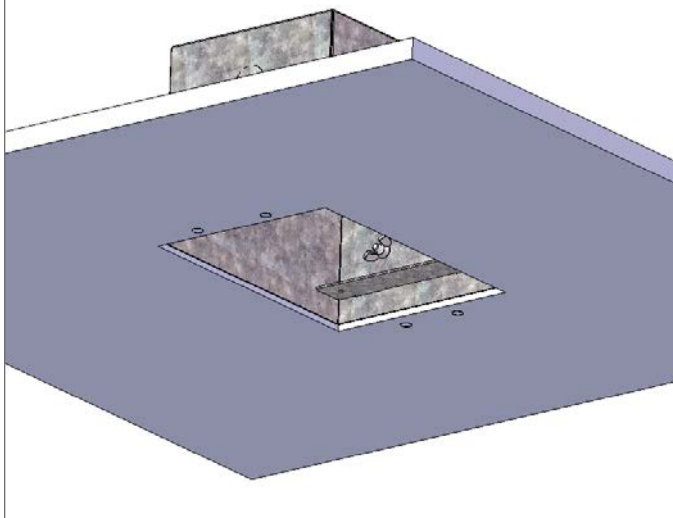


### BOTTOM VIEW

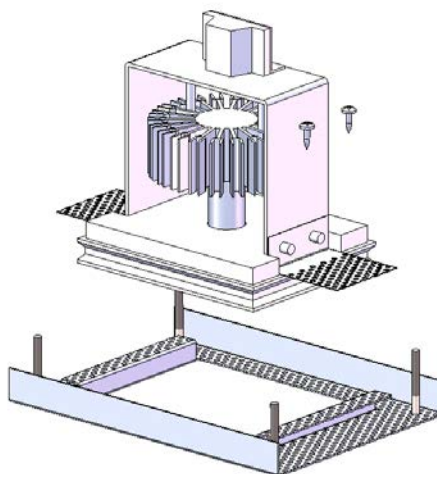
2. Once housing is in position, secure dry wall screws driven into mounting brackets.



3. Loosen all four wingnuts slightly and position the housing so that it is recessed in the opening by about  $\frac{1}{4}$ ". Tighten all wingnuts



4. Attach the fixture to the face plate as shown. Connect fixture wires to building wires, **RESPECTING POLARITY**. Mount the assembly into the back box. Adjust accordingly so the fixture face is flush with the ceiling surface.



5. Apply fiberglass tape around opening and apply plaster. Sand smooth when dry.

