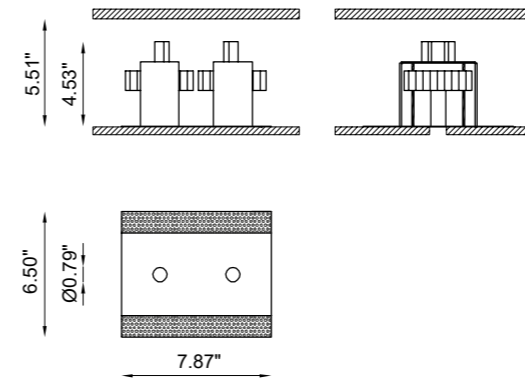
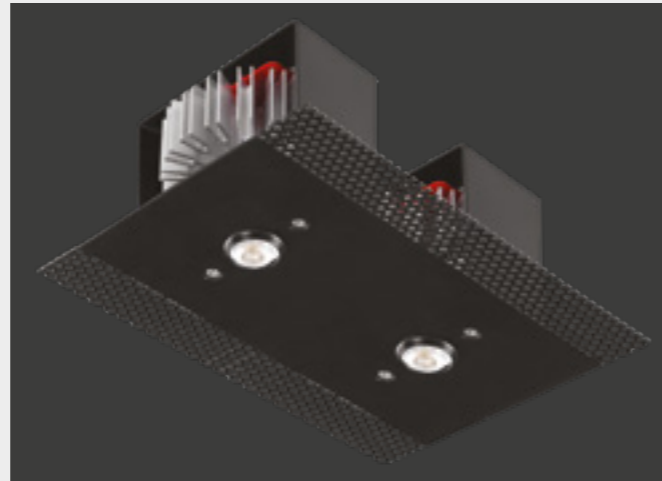


# GENIUS TWIN NAKED

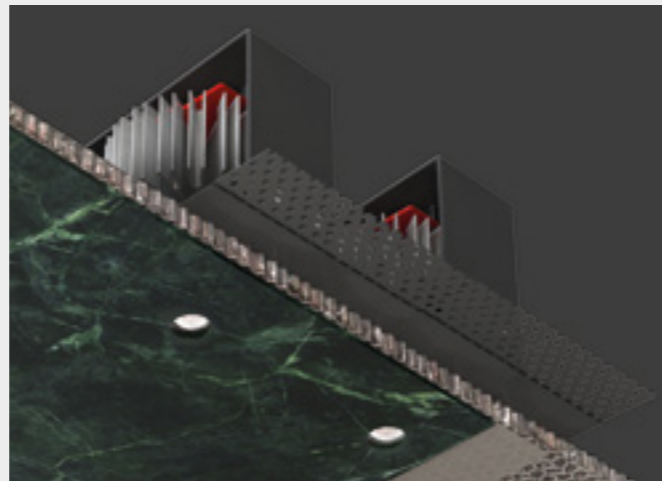
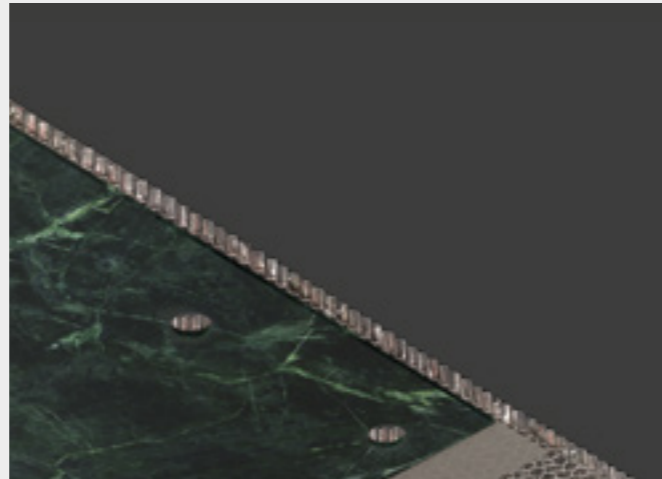


## A GENIUS FOR ANY MATERIAL.

The Genius design has been doubled: Genius Twin, a totally recessed indoor luminaire for ceiling mounting, now available in its "Naked" version, extending the total surface integration concept to any material and surface.

Fitted with two light emission holes measuring only 0.79" (20 mm), the luminaire disappears completely when it is switched off, thanks to its total integration with the surfaces on which **it is installed from above the ceiling panel**: wood, cement, mirror, marble and industrial modules with a thickness from 0.2" (5 mm) to a maximum of 0.79" (20 mm).

The electronics retain the performances of the Genius, with the electrical part which can be removed through the light hole, thanks to a push-pull mechanism making it easy to pull the LED light source out and replace it, so there is no need for any inspection hatch, nor for invasive maintenance operations.



## CODE COMPOSITION

BU1065 BL 4 R 40 E WD

*light color*

27	2700K
30	3000K
40	4000K

example of code composition

BU1065 BL 4 R 40 E 30 WD

## TECHNICAL FEATURES

Code	<b>BU1065 XX</b>
Type	Downlight 90° ▲
Material	Aluminum I Steel
Finishing	Black
Weight	2.87 lbs
Mounting	Ceiling recessed
IP rating	IP20
Control gear	Remote constant current electronic driver (not included)
Lamp type	LED 700mA ⚡ Vf: 2 x 11.5 VDC
Lamp wattage	8.5W
Luminous efficacy	130 lm/W - 3000K
Light distribution	Wide beam 40°
Fitting	-
Light colour	White 3000K White 2700K I 4000K (on request)
Light hole	Ø 0.79"
Voltage connection	By driver (optional)
CRI	>90
Note	Suitable for installation on surfaces max 0.79" deep.



79 Trenton Avenue  
Frenchtown, NJ 08825

www.designplan.com

Tel: (908) 996-7710  
Fax: (908) 996-7042