

I-Lantern (Wall)

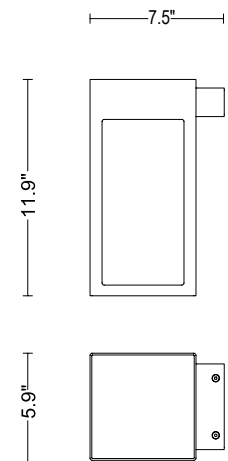
I-Lantern is an IP65-rated luminaire that can be used as a bollard, a garden lamp, wall-mounted. The i-Lantern wall-mounted version is suitable for outdoor installation in residential and commercial areas. It is available in 2 color temperatures and 5 standard finishes.



TECHNICAL DATA

Wattage	12.5W
Power Supply	Integral 120-277VAC - 0-10V Dimming
Construction	Body: Die-Cast and Extruded Aluminum Lens: Opal Polycarbonate
CCT	2700K, 3000K
BUG Rating	B0-U1-G0
CRI	>90
Delivered Lumens	700 lm (3000K)
Efficacy	56 lm/W
Optics	Diffuse
Finishes	5 Standard, See Below
Fixture Dimensions	5.91" x 7.50" x 11.9" h
Lumen Maintenance	L80, B15 >60,000hrs (Ta 40°C)
Color Consistency	3-Step MacAdam
IP Rating	IP65
Impact Resistance	IK08

Fixture Dimensions



ORDERING INFORMATION

Example: LN70PARDHBBZV.US.

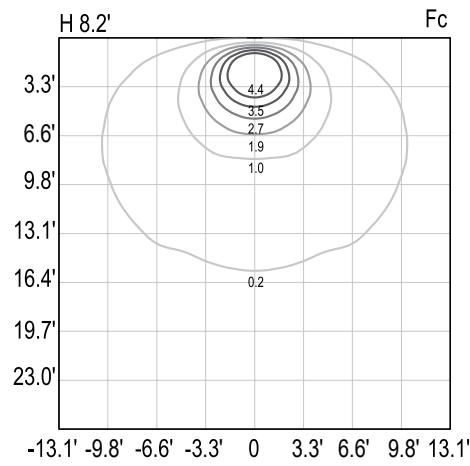
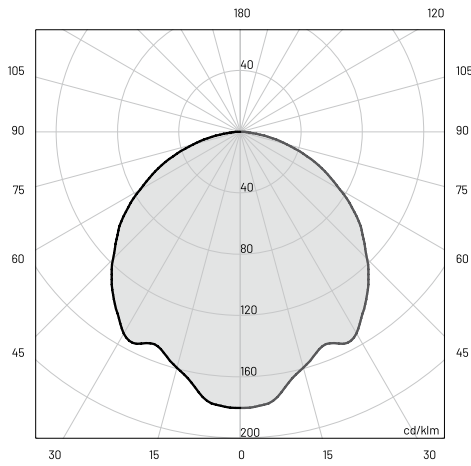
LN70PAR	D		BBZ		US
Model No.	Optics	CCT	Power	Finish	
LN70PAR - Wall Version	D - Diffuse	Y - 2700K H - 3000K	BBZ - Integral	L - Graphite V - Oxide U - White G - Black H - Gray	US

Job Name/Date:

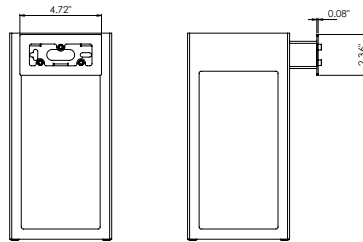
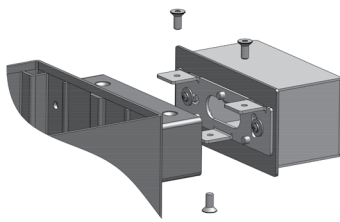
Fixture Type Designation:

PHOTOMETRIC DATA

Note: All photometric data is 3000K



MOUNTING - Included



Job Name/Date:

Fixture Type Designation: