

LYSS



designplan™ 


Luce & Light

LYSS FRAMED IN LIGHT

OUTDOOR PROJECTORS



designplan 

79 Trenton Avenue
Frenchtown, NJ 08825

www.designplan.com

Tel: (908) 996-7710
Fax: (908) 996-7042



LYSS

REFERENCES

^ LYSS 1.0

2700K, 5W, satin 20°x180°, gray

Project by / Studios Architecture

Light planning by / Aartill

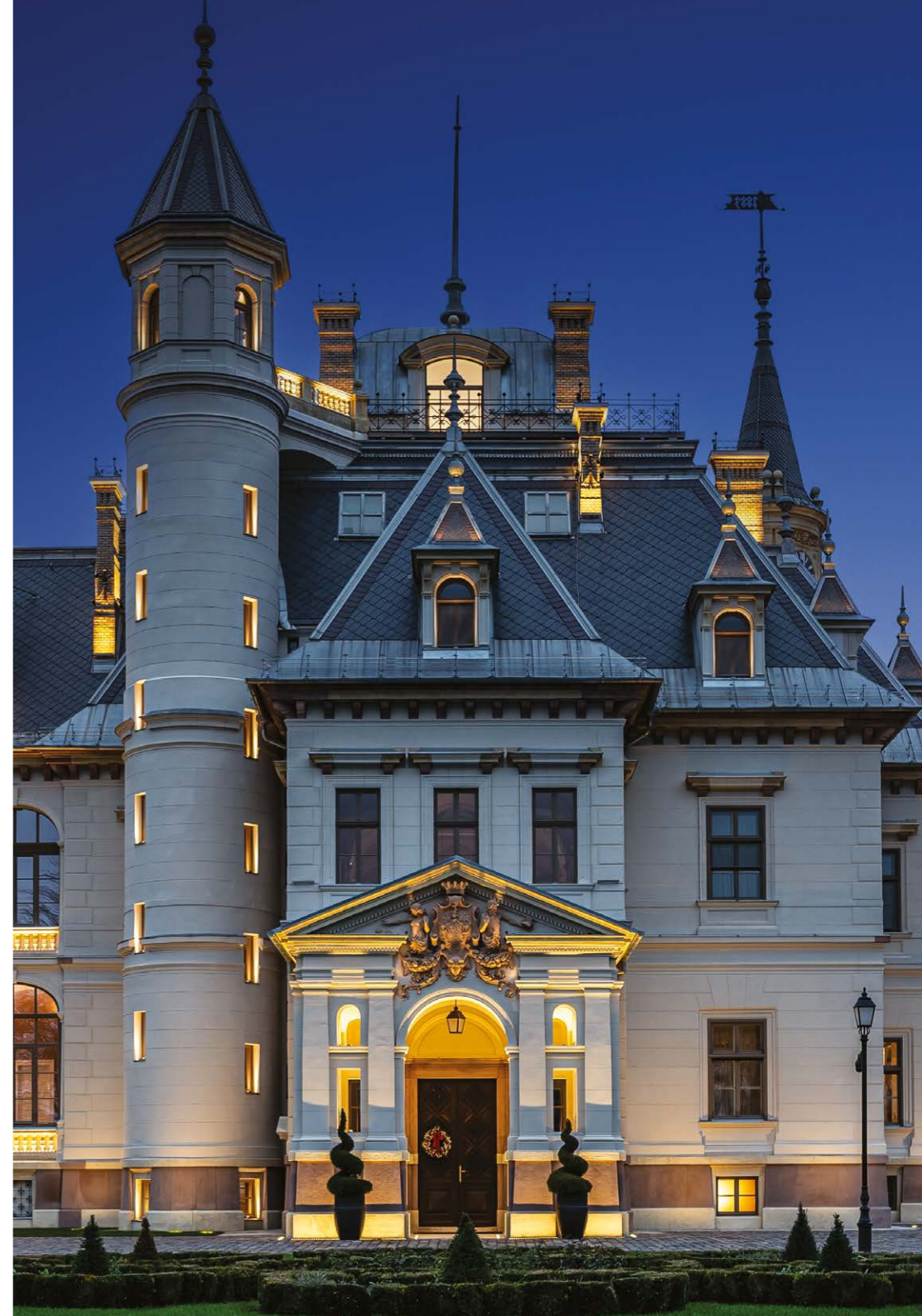
Photo / Courtesy of Oreima Services

Facade on Rue du Louvre, Paris, France



^ LYSS 1.0
3000K, 7W, satin 20°x180°, gray
SIRI 2.0
3000K, 16W, 40°, gray,
customized DALI version
TREVI 1.0 / 1.1 / 1.2
3000K, 7W-14W-21W, 40°

> LYSS 1.0
3000K, 7W, satin 20°x180°, gray
Light planning by / 3F Project
Photo by / Hlinka Zsolt
Botaniq Castle of Tura, Tura, Hungary





^ LYSS MINI 1.0
2700K, 3W, satin 9°x160°, cor-ten
BEAM 1.0
2700K, 3W, 8°, stainless steel
Project by / STOA architectura
Light planning by / Light2Life
Photo by / Alexander Bogorodskiy,
BessaHotel Baixa, Porto, Portugal



< **LYSS 1.0**
3000K, 7W, clear 10°x180°, white
Project by / arch. Pino Casolaro
Photo by / Alessio Tamborini
Giardino pubblico, Foggia, Italy

^ **LYSS 1.0**
4000K, 7W, clear 10°x180°, white
NEVA 5.0
RGB, DMX, 20W, 15°
SIRI 3.2
RGBW, 33W, 30°x60°, white

Space Made Light
traverso-vighy: adventures in light and architecture
Order of Architects, Planners, Landscapers and Conservationists
of the Province of Barletta-Andria-Trani
Palazzo Covelli, Trani, Italy



✓ **LYSS 1.0**
4000K, 7W, satin 20°x180°, white
SPOT 1.0
4000K, 2W, 10°-40°
TREVI 1.1
4000K, 21W, diffuse

Light planning by / Emanuele Scaringi, Garofoli
Photo by / Alessio Tamborini
Chiesa Matrice dell'Assunzione della Beata Vergine Maria, Foggia, Italy



^ LYSS MINI 1.0
3000K, 3W, satin 9°x160°, anthracite

Light planning by / Ida Hågensen (SML Lighting)
Delivered by / SML Lighting
Photo by / Tomasz Majewski
Hotel Bristol, Oslo, Norway





^ **LYSS 1.0**
2700K, 5W, clear 10°x180°, white
PASITO 1.1
2700K, 8W, asymmetrical 150°x90° customized
version on a 600-mm-high column

Project by / Thiénot Architecture
Light planning by / Lumensens
Photo by / François Guillemin
Caves Champagne Joseph Perrier,
Châlons-en-Champagne, France

Lyss 1.0 is installed on the facade of the historic Champagne House Joseph Perrier. The outdoor projectors were strategically positioned on the outermost edges of the windowsills, where they create a luminous frame around the windows and around the entire facade, including the cornice.

^ LYSS 1.0
3000K, 5W, clear 10°x180°, white

Project by / arch. Daniela Giandomenico
Chiesa di San Michele Arcangelo
and Santuario di San Pantaleone
Miglianico, Chieti, Italy

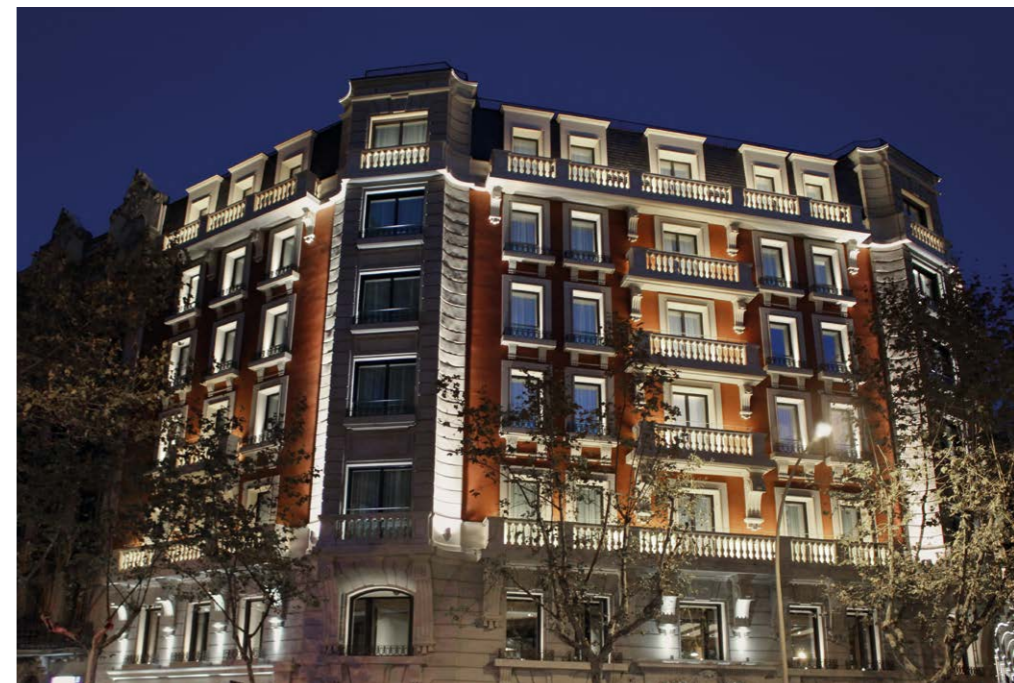





^ **LYSS 1.0**
3000K, 5W, clear 10°x180°, white
Project by / arch. Fernanda Cantone
Light planning by / Light Style
Castello Tafuri Charming Suites
Portopalo di Capo Passero, Syracuse, Italy

> **LYSS 1.0**
3000K, 5W-7W, clear 10°x180°, white
LITUS 2.4
3000K, 7W, 13°x52°
Project by / arch. Daniela Giandomenico
Chiesa di San Michele Arcangelo
and Santuario di San Pantaleone
Miglianico, Chieti, Italy





< LYSS 1.0
2700K - 4000K, 7W, satin 20°x180°, customized
version with finish in RAL Oyster white
Light planning by / BMLD Architectural Lighting Design
The Corner Hotel, Barcelona, Spain



^ LYSS 1.0
3000K, 7W, clear 10°x180°, white
NEVA 2.1
3000K, 16W, 45°
SIRI 2.0
3000K, 16W, 40°, white

Project by / Amatori Architettura d'Interni
Architecture by / arch. Gino Valle
Light planning by / Litek
Banca Alto Vicentino-Schio,
head office, Schio, Vicenza, Italy



< **LYSS 1.0**
3000K, 7W, clear 10°x180°, anthracite

Project by / rollimarchini
Light planning by / Sommerlatte & Sommerlatte
Photo by / Severin Jakob
Jakob AG, Trubschachen, Switzerland

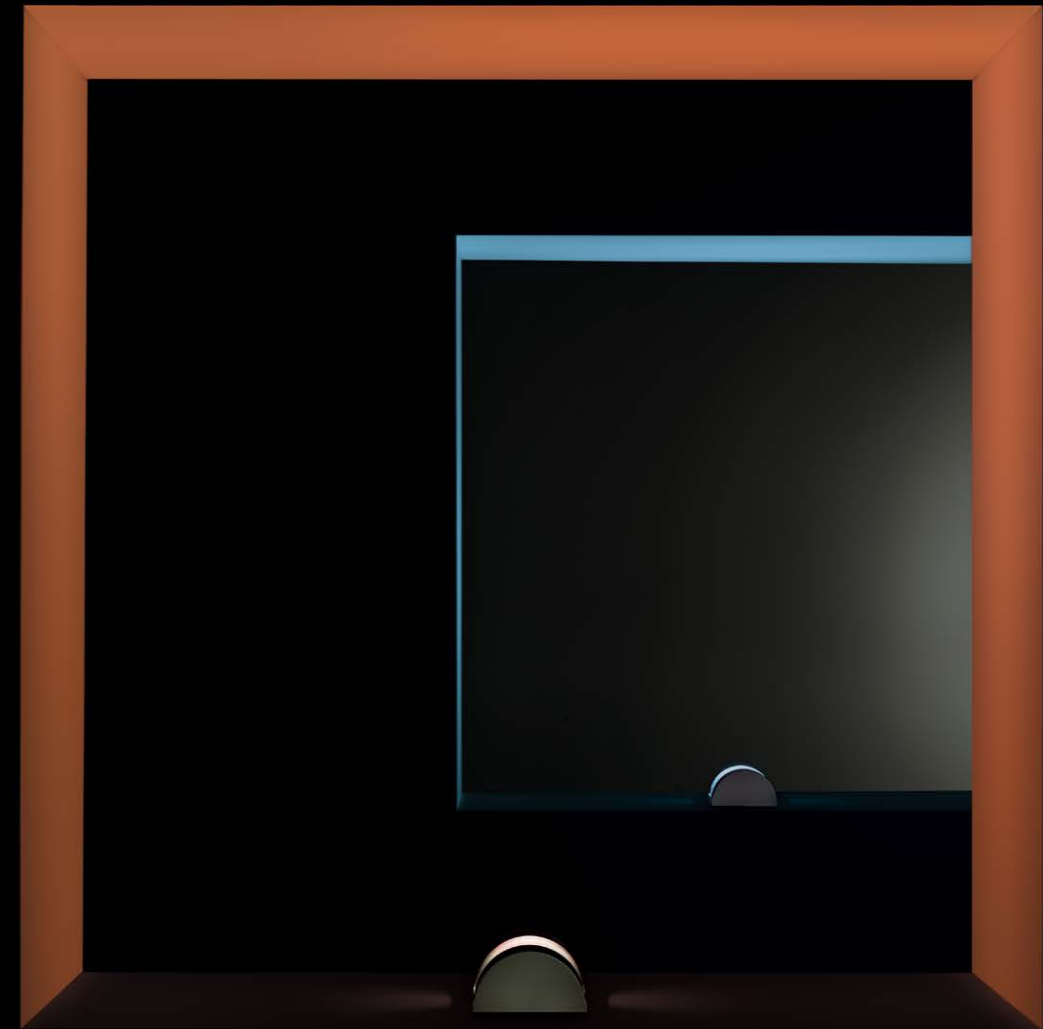
^ **LYSS 1.0**
customized version with green LED color, 7W clear
10°x180°, gray

Project by / Christiansen Ges. Projektentwicklung
Light planning by / VIA MODULAR
Architecture by / Bernd Fritz
Insel Hotel, Heilbronn, Germany

LYSS

COLORSENSE (LYSS 2.0)

COLORSENSE technology chromatically
blends and shapes RGBW light,
producing a 12°x160° beam



LYSS 2.0
RGBW, 19W, white

LYSS 2.0

IK06

LENS MADE OF POLYCARBONATE WITH ANTI-UV COATING, CHARACTERISED BY EXCELLENT IMPACT RESISTANCE

LYSS MINI 1.0

IK07

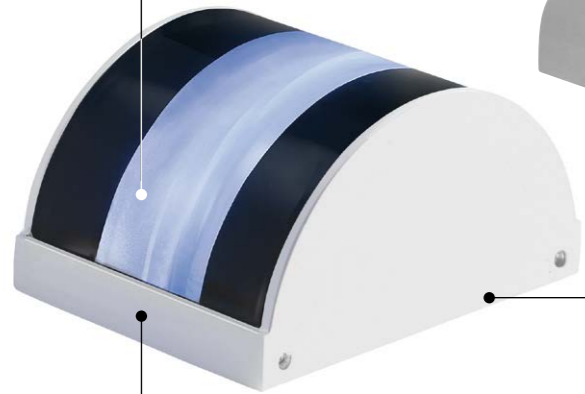
BODY IN THERMALLY CONDUCTIVE PLASTIC, PROVIDING EXCELLENT CORROSION RESISTANCE, EVEN IN HARSH (SALINE) ENVIRONMENTS

LYSS 1.0

IK05

LENS IN SERIGRAPHED GLASS WITH EXCELLENT SCRATCH RESISTANCE

BUILT-IN POWER SUPPLY UNIT



BODY IN LOW-COPPER-CONTENT DIE-CAST ALUMINUM ALLOY EN AB 47100 FOR EXCELLENT CORROSION RESISTANCE

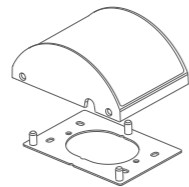


PLATE ADJUSTABLE BY 5° TO ALIGN LIGHT BEAM WITH INSTALLATION SURFACE

BODY IN LOW-COPPER-CONTENT DIE-CAST ALUMINUM ALLOY EN AB 47100 FOR EXCELLENT CORROSION RESISTANCE

LYSS

MATERIALS



Lyss 1.0 / 2.0

6-STEP MATERIAL PROTECTION, AND OXIDATION AND CORROSION RESISTANCE
Low-copper-content aluminum alloy EN AB 47100
Preparation for painting with ALODINE NT-E® coating
Epoxy paint
Polyester paint
Paints compliant with Qualicoat automotive coating standard
Salt spray tested (over 1000 hours)

Lyss Mini 1.0

Salt spray tested (over 2000 hours)



RAL FINISH ON REQUEST



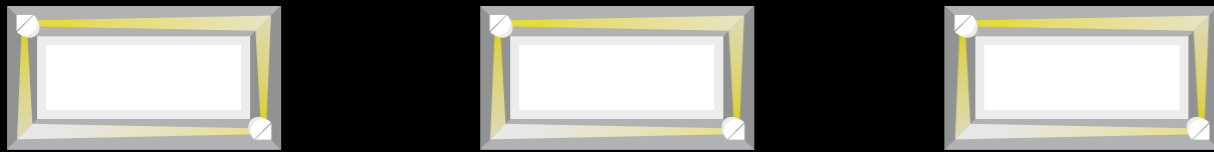
BUILT-IN PROTECTION SYSTEMS:

IPS INTELLIGENT PROTECTION SYSTEM (Lyss Mini 1.0)
PID PROTECTIVE IMPEDANCE DEVICE (Lyss 1.0 / 2.0)

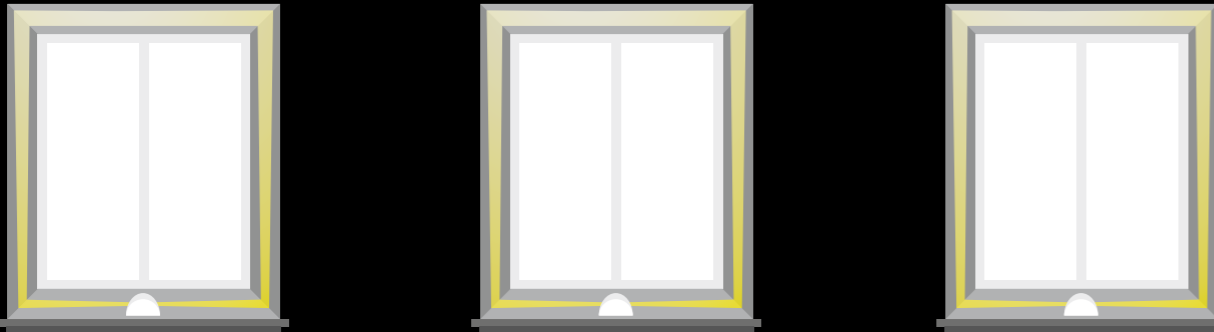


SUITABLE FOR OUTDOOR INSTALLATIONS ON FACADES THANKS TO ITS SMALL DIMENSIONS THAT MAKE IT BARELY VISIBLE

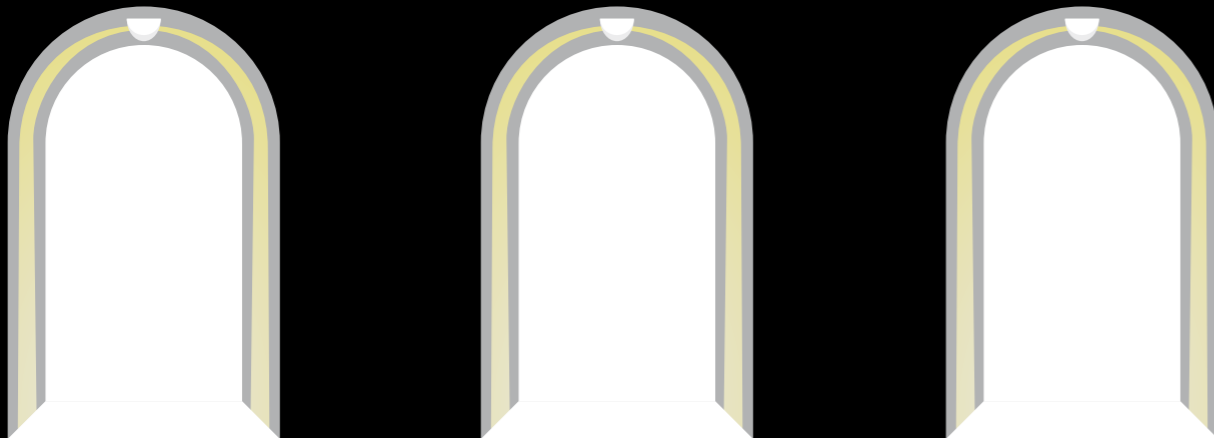
CORNERS (LYSS MINI 1.0)



WINDOWSILLS



ARCHWAYS



LYSS

OPTICS AND APPLICATIONS



SEMICIRCULAR UNIFORM BLADE OF LIGHT:
SHARP, TRANSPARENT OPTICS, 10°X180°



SEMICIRCULAR UNIFORM BLADE OF LIGHT:
SOFT, FROSTED OPTICS, 20°X180°



LYSS

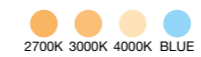
OUTDOOR PROJECTORS



LYSS MINI 1.0

3W 24VDC

clear optics 8°x160°
satin optics 9°x160°



LYSS 1.0

5W 24VDC
7W 24VDC

clear optics 10°x180°
satin optics 20°x180°



LYSS 2.0

19W 24VDC

optics
12°x160°



LYSS 1.0
3000K, 7W, clear 10°x180°, gray

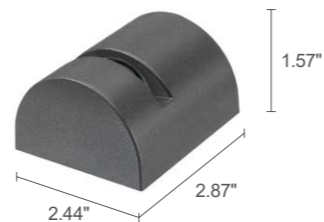
Light planning by / Cristian Turra
Photo by / Alessio Tamborini
Private residence, Brescia, Italy



^
 LYSS 1.0
 3000K, 5W, clear 10°x180°, white
 BRIGHT 2.5
 3000K, 5W, customized version 24°

Light planning by / Cristian Turra
 Private residence, Iseo, Brescia, Italy

LYSS MINI 1.0



LED TECH 0.33 lbs IP65 IK07
 A++ IPS

POWER / POWER SUPPLY 3W 24VDC
MODEL NO.
 LM10000 ■ E White
 LM10000 ■ F Gray
 LM10000 ■ H Anthracite
 LM10000 ■ T Cor-ten

LED COLOR	F - 2700K 5 - 3000K 9 - 4000K 1 - blue
OPTICS	Z - clear 8°x160° Y - satin 9°x160°
LUMEN OUTPUT AT SOURCE	246 lm (3000K)
DELIVERED LUMEN OUTPUT	67 lm (3000K, 8°x160°)
NO. AND TYPE OF LED	1 power LED, 1/4 ANSI BIN (white LED color) 50,000h L95 B10 (Ta 25°C)

LYSS 1.0



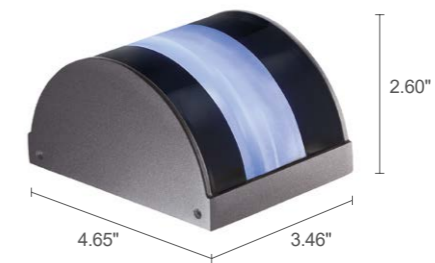
LED TECH 1.87 lbs IP65 IK05
 A++ PID

POWER / POWER SUPPLY 5W 24VDC
MODEL NO.
 LY1010 ■ E White
 LY1010 ■ F Gray
 LY1010 ■ H Anthracite
 LY1010 ■ T Cor-ten

POWER / POWER SUPPLY 7W 24VDC
MODEL NO.
 LY1011 ■ E White
 LY1011 ■ F Gray
 LY1011 ■ H Anthracite
 LY1011 ■ T Cor-ten

LED COLOR	F - 2700K 5 - 3000K 9 - 4000K 1 - blue
OPTICS	Z - clear 10°x180° Y - satin 20°x180°
LUMEN OUTPUT AT SOURCE	347 lm (3000K, 5W) 530 lm (3000K, 7W)
DELIVERED LUMEN OUTPUT	109 lm (3000K, 20°x180°, 5W) 170 lm (3000K, 20°x180°, 7W)
NO. AND TYPE OF LED	2 power LEDs, 1/4 ANSI BIN (white LED color) 50,000h L95 B10 (Ta 25°C)

LYSS 2.0



LED TECH 1.54 lbs IP65 IK06
 A++ PID

POWER / POWER SUPPLY 19W 24VDC
MODEL NO.
 LY2000 7 U E White
 LY2000 7 U F Gray
 LY2000 7 U H Anthracite
 LY2000 7 U T Cor-ten

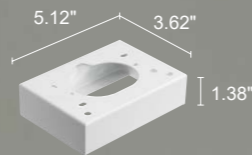
LED COLOR	RGBW
OPTICS	12°x160°
LUMEN OUTPUT AT SOURCE	1024 lm, R: 124 lm G: 340 lm B: 120 lm W: 440 lm (4000K)
DELIVERED LUMEN OUTPUT	256 lm, R: 31 lm G: 85 lm B: 30 lm W: 110 lm (4000K)
NO. AND TYPE OF LED	4 RGBW LED groups 50,000h L80 B10 (Ta 25°C)

LYSS

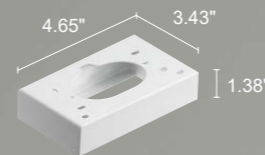
ACCESSORIES FOR INSTALLATION



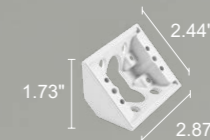
Optional outer casing
WC0301
(Lyss 1.0 / 2.0)



Connection housing
WD0500E - White
WD0500F - Gray
WD0500H - Anthracite
WD0500T - Cor-ten
(Lyss 1.0)



Connection housing
WD0600E - White
WD0600F - Gray
WD0600H - Anthracite
WD0600T - Cor-ten
(Lyss 2.0)



Base for corners
WD0800E - White
WD0800F - Gray
WD0800H - Anthracite
WD0800T - Cor-ten
(Lyss Mini 1.0)



^
LYSS MINI 1.0
3000K, 3W, clear 8"x160", white

WINDOW
5.91" x 5.91"
LYSS 1.0
5W



satin 20°x180°



clear 10°x180°

WINDOW
7.87" x 7.87"
LYSS 1.0
7W



satin 20°x180°



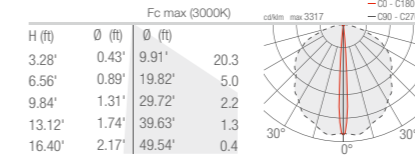
clear 10°x180°

LYSS

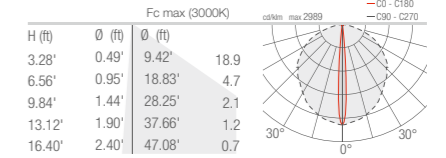
PHOTOMETRIC DATA

LYSS MINI 1.0

Z- Clear 8°x160°

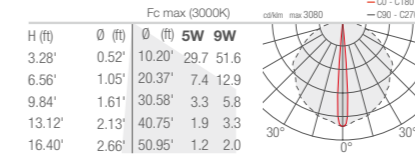


Y- Satin 9°x160°

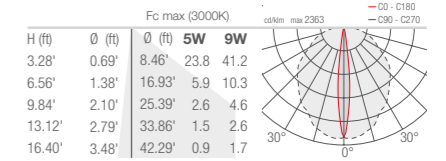


LYSS 1.0

Z- Clear 10°x180°

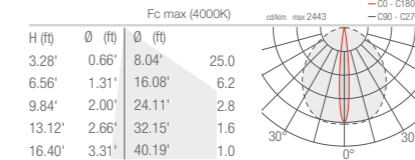


Y- Satin 20°x180°



LYSS 2.0

U - 12°x160°





designplan 

The 'designplan' logo consists of the word 'designplan' in a bold, white, lowercase sans-serif font. To the right of the text is a circular icon containing the letters 'dp' in a stylized, white, lowercase font.

79 Trenton Avenue
Frenchtown, NJ 08825

www.designplan.com

Tel: (908) 996-7710
Fax: (908) 996-7042