



INSTRUCTIONS PERTAINING TO RISK OF FIRE OR INJURY TO PERSONS. READ ALL INSTRUCTIONS. IMPORTANT SAFETY INSTRUCTIONS. SAVE THESE INSTRUCTIONS.

DANGER - RISK OF SHOCK - DISCONNECT POWER BEFORE INSTALLATION! Please read all instructions before installation.

- Keep these instructions for future reference.
- Must be installed by a qualified electrician in accordance with national and local standards. Designplan is not responsible for fixtures installed without regard to these standards.
- Unauthorized alterations or tampering of product voids warranty.
- The main power connection must be in accordance with local electrical codes.
- Suitable for INDOOR applications.
- DO NOT INSTALL INSULATION WITHIN 3.0" (76 mm) OF ANY PART OF THE LUMINAIRE.



Electrical Connections:

- LED lights must be **connected in series** respecting polarities.
- **CHOOSE POWER SUPPLY ACCORDINGLY.** Please consider the voltage through which fixtures are fed as well as the max power consumption.
- **Connect power only if all fixtures are connected.**
- The power supplies MUST be installed in aerated rooms, far from heat sources. Overworking or lack of air circulation will not permit natural dissipation.
- The electronic power supply is current-stable, therefore it partially compensates the voltage-drop problems related to the cable length; we suggest not to exceed 100 ft.
- Use only Class 2 type electronic power supply.
- Never use switches on secondary circuit.

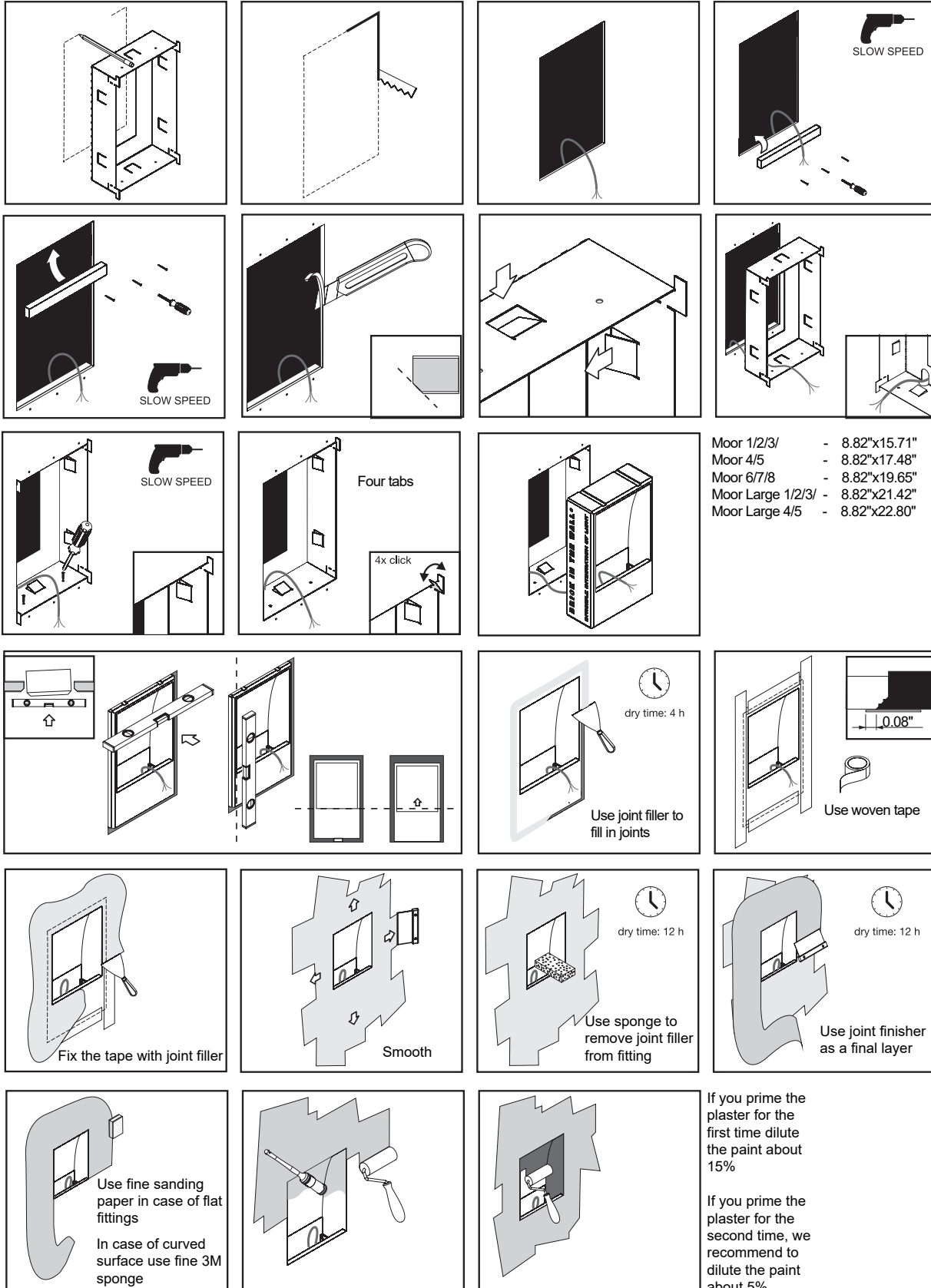
Maintenance

Scheduled maintenance must be carried out once a year on all lighting devices, regardless of appliance class and type of use. It must include the following operations:

- Periodically clean fixtures to remove dirt from gratings and screw heads.
- Check tightness of screws on various parts of the device.
- Check that all cable glands and cables are intact and tight. Check that the glass or plastic lens is intact, and replace it if broken or damaged.
- The internal components such as the ballast, driver, washers and screws must not show clear signs of oxidation or rust. Clear traces of rust and oxidation will indicate the presence of water inside the device.
- In the case of damage, the components must be replaced by original components or spare parts.

Fixture Installation (In a Gypsum Wall With Optional Plasterkit)

installation instructions



Step 1: Assemble the fixture components.

Step 2: Prepare the wall by marking and cutting the opening.

Step 3: Attach the mounting plate to the wall using screws. **SLOW SPEED**

Step 4: Attach the mounting plate to the wall using screws. **SLOW SPEED**

Step 5: Attach the mounting plate to the wall using screws. **SLOW SPEED**

Step 6: Attach the mounting plate to the wall using screws. **SLOW SPEED**

Step 7: Attach the mounting plate to the wall using screws. **SLOW SPEED**

Step 8: Attach the mounting plate to the wall using screws. **SLOW SPEED**

Step 9: Attach the mounting plate to the wall using screws. **SLOW SPEED**

Step 10: Attach the mounting plate to the wall using screws. **SLOW SPEED**

Step 11: Attach the mounting plate to the wall using screws. **SLOW SPEED**

Step 12: Attach the mounting plate to the wall using screws. **SLOW SPEED**

Step 13: Attach the mounting plate to the wall using screws. **SLOW SPEED**

Step 14: Attach the mounting plate to the wall using screws. **SLOW SPEED**

Step 15: Attach the mounting plate to the wall using screws. **SLOW SPEED**

Step 16: Attach the mounting plate to the wall using screws. **SLOW SPEED**

Step 17: Attach the mounting plate to the wall using screws. **SLOW SPEED**

Step 18: Attach the mounting plate to the wall using screws. **SLOW SPEED**

Step 19: Attach the mounting plate to the wall using screws. **SLOW SPEED**

Step 20: Attach the mounting plate to the wall using screws. **SLOW SPEED**

Step 21: Attach the mounting plate to the wall using screws. **SLOW SPEED**

Step 22: Attach the mounting plate to the wall using screws. **SLOW SPEED**

Step 23: Attach the mounting plate to the wall using screws. **SLOW SPEED**

Step 24: Attach the mounting plate to the wall using screws. **SLOW SPEED**

Step 25: Attach the mounting plate to the wall using screws. **SLOW SPEED**

Step 26: Attach the mounting plate to the wall using screws. **SLOW SPEED**

Step 27: Attach the mounting plate to the wall using screws. **SLOW SPEED**

Step 28: Attach the mounting plate to the wall using screws. **SLOW SPEED**

Step 29: Attach the mounting plate to the wall using screws. **SLOW SPEED**

Step 30: Attach the mounting plate to the wall using screws. **SLOW SPEED**

Dimensions:

- Moor 1/2/3/ - 8.82"x15.71"
- Moor 4/5 - 8.82"x17.48"
- Moor 6/7/8 - 8.82"x19.65"
- Moor Large 1/2/3/ - 8.82"x21.42"
- Moor Large 4/5 - 8.82"x22.80"

Step 31: Use joint filler to fill in joints. **dry time: 4 h**

Step 32: Use woven tape. **0.08"**

Step 33: Fix the tape with joint filler.

Step 34: Smooth. **dry time: 12 h**

Step 35: Use sponge to remove joint filler from fitting. **dry time: 12 h**

Step 36: Use joint finisher as a final layer. **dry time: 12 h**

Step 37: Use fine sanding paper in case of flat fittings. In case of curved surface use fine 3M sponge.

Step 38: Use fine sanding paper in case of flat fittings. In case of curved surface use fine 3M sponge.

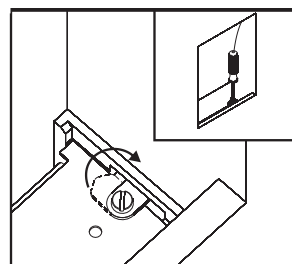
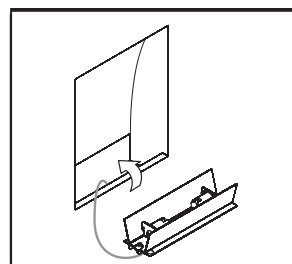
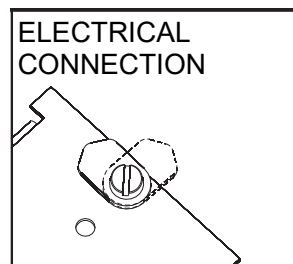
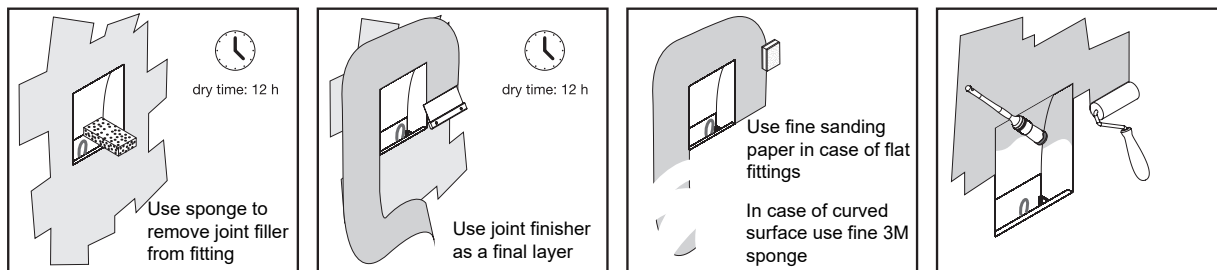
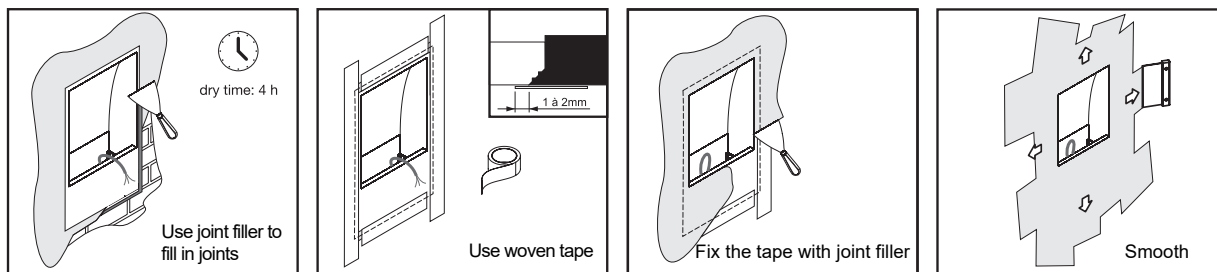
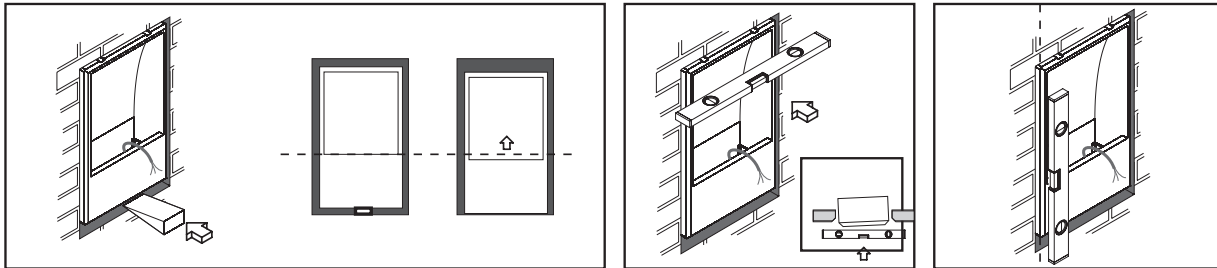
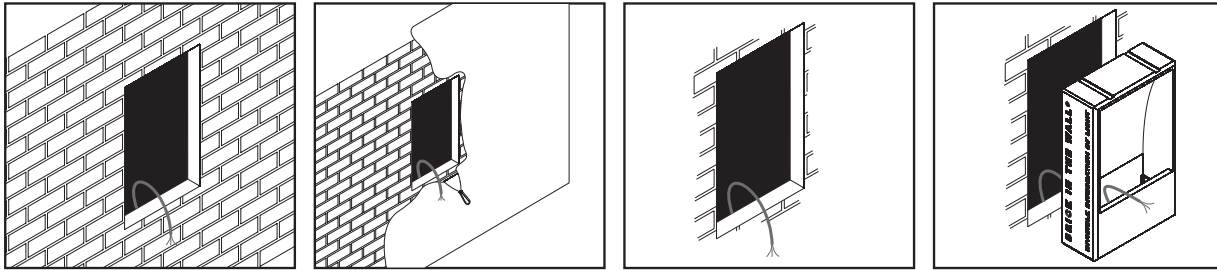
Step 39: Use fine sanding paper in case of flat fittings. In case of curved surface use fine 3M sponge.

Notes:

- If you prime the plaster for the first time dilute the paint about 15%
- If you prime the plaster for the second time, we recommend to dilute the paint about 5%

Wall Installation (In a Solid Wall)

installation instructions



If you prime the plaster for the first time dilute the paint about 15%

If you prime the plaster for the second time, we recommend to dilute the paint about 5%

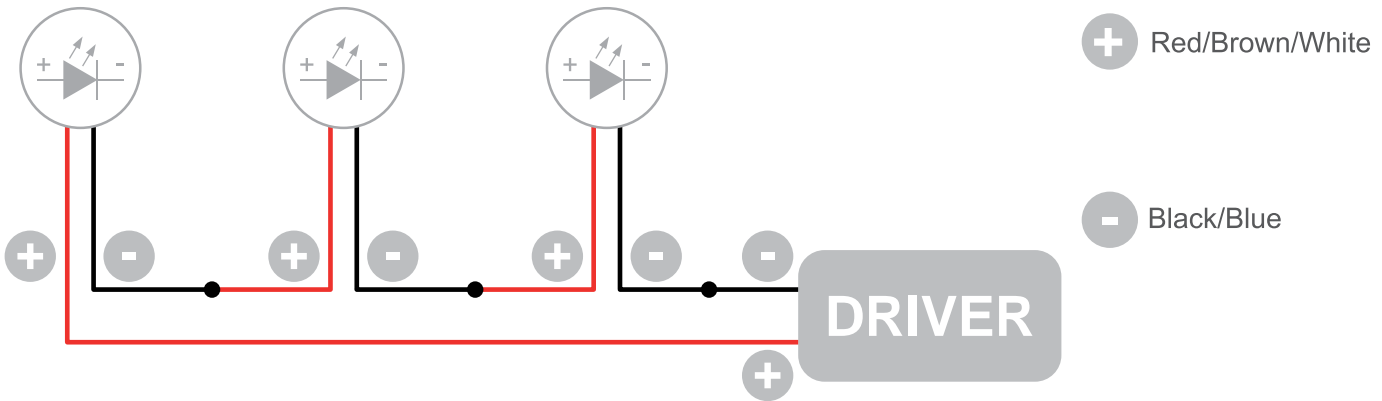
Moor 1/2/3/	- 8.82"x15.71"
Moor 4/5	- 8.82"x17.48"
Moor 6/7/8	- 8.82"x19.65"
Moor Large 1/2/3/	- 8.82"x21.42"
Moor Large 4/5	- 8.82"x22.80"


350mA DC from remote driver

- It is the contractor's responsibility to install Remote Driver in a suitable electrical enclosure!!!

Wiring Diagram

250mA, 350mA, 500mA
(Static White Series Connection)



 The individual lamps must be connected in series.
Only power up the system once all the lamps have been connected.

- LED lights work at constant current. When choosing a power supply unit, you need to consider the current by which the LEDs are driven and their maximum power consumption.
- Only power up the system once all the lamps are connected. Connecting an individual lamp to an active power supply may cause the lamp to break due to over-voltage.
- The electronic power supply is constant current, so to a certain extent it automatically compensates the voltage drop associated with cable length; however, we advise not exceeding 100 feet.
- Lamps and power supply units must be installed in well-ventilated boxes or locations to allow a natural heat diffusion and avoid the devices overheating.
- On the power system, install a surge protection device to reduce the intensity of any voltage spikes to protect the lighting fixtures from the risk of damage.
- Fixture NOT suitable for covering with thermally insulating material.