



INSTRUCTIONS PERTAINING TO RISK OF FIRE OR INJURY TO PERSONS. READ ALL INSTRUCTIONS. IMPORTANT SAFETY INSTRUCTIONS. SAVE THESE INSTRUCTIONS.

DANGER - RISK OF SHOCK - DISCONNECT POWER BEFORE INSTALLATION! Please read all instructions before installation.

- Keep these instructions for future reference.
- Must be installed by a qualified electrician in accordance with national and local standards. Designplan is not responsible for fixtures installed without regard to these standards.
- Unauthorized alterations or tampering of product voids warranty.
- The main power connection must be in accordance with local electrical codes.
- Suitable for INDOOR applications.
- DO NOT INSTALL INSULATION WITHIN 76 mm (3") OF ANY PART OF THE LUMINAIRE.



Electrical Connections:

- LED lights must be **connected in series** respecting polarities.
- **CHOOSE POWER SUPPLY ACCORDINGLY.** Please consider the voltage through which fixtures are fed as well as the max power consumption.
- **Connect power only if all fixtures are connected.**
- The power supplies **MUST** be installed in aerated rooms, far from heat sources. Overworking or lack of air circulation will not permit natural dissipation.
- The electronic power supply is current-stable, therefore it partially compensates the voltage-drop problems related to the cable length; we suggest not to exceed 100 ft.
- Use only Class 2 type electronic power supply.
- Never use switches on secondary circuit.

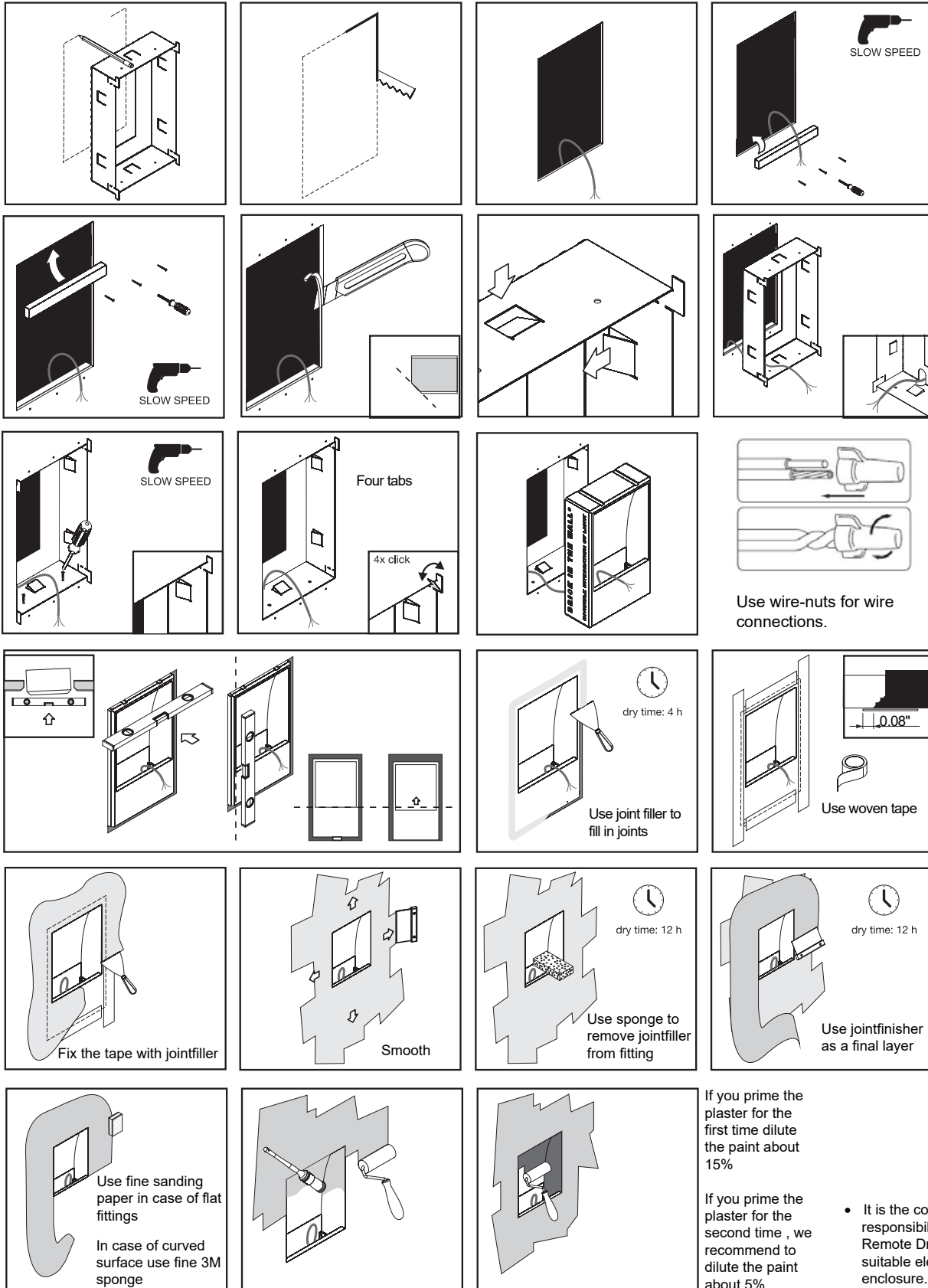
Maintenance

Scheduled maintenance must be carried out once a year on all lighting devices, regardless of appliance class and type of use. It must include the following operations:

- Periodically clean fixtures to remove dirt from gratings and screw heads.
- Check tightness of screws on various parts of the device.
- Check that all cable glands and cables are intact and tight. Check that the glass or plastic lens is intact, and replace it if broken or damaged.
- The internal components such as the ballast, driver, washers and screws must not show clear signs of oxidation or rust. Clear traces of rust and oxidation will indicate the presence of water inside the device.
- In the case of damage, the components must be replaced by original components or spare parts.

Fixture Installation (In a Gypsum Wall With Optional Plasterkit)

installation instructions



Step 1: Prepare the wall opening.

Step 2: Mount the fixture to the wall.

Step 3: Secure the fixture with screws. **SLOW SPEED**

Step 4: Connect the wiring using wire-nuts. **Use wire-nuts for wire connections.**

Step 5: Apply joint filler to the joints. **dry time: 4 h**

Step 6: Apply woven tape. **Use woven tape**

Step 7: Smooth the surface. **dry time: 12 h**

Step 8: Use sponge to remove jointfiller from fitting. **dry time: 12 h**

Step 9: Use jointfinisher as a final layer. **dry time: 12 h**

Step 10: Fix the tape with jointfiller.

Step 11: Smooth the surface.

Step 12: Use sponge to remove jointfiller from fitting.

Step 13: Use jointfinisher as a final layer.

Step 14: Use fine sanding paper in case of flat fittings.

Step 15: In case of curved surface use fine 3M sponge.

Step 16: Smooth the surface.

Step 17: Smooth the surface.

Step 18: Smooth the surface.

Step 19: Smooth the surface.

Step 20: Smooth the surface.

Step 21: Smooth the surface.

Step 22: Smooth the surface.

Step 23: Smooth the surface.

Step 24: Smooth the surface.

Step 25: Smooth the surface.

Step 26: Smooth the surface.

Step 27: Smooth the surface.

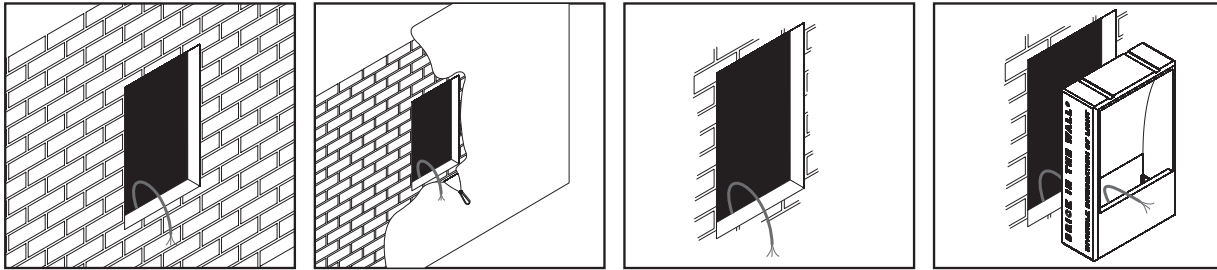
Step 28: Smooth the surface.

Step 29: Smooth the surface.

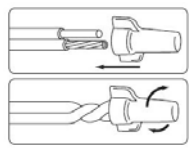
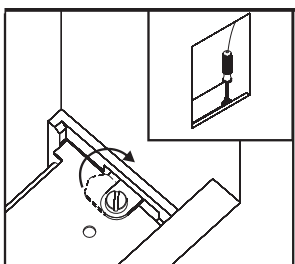
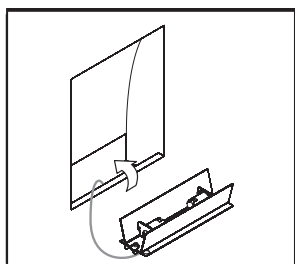
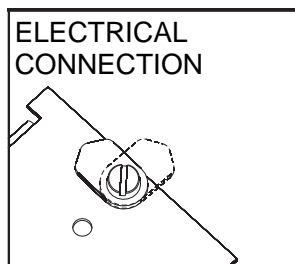
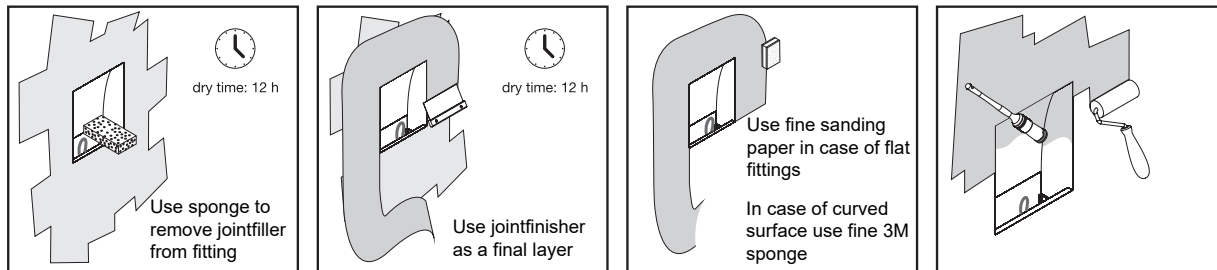
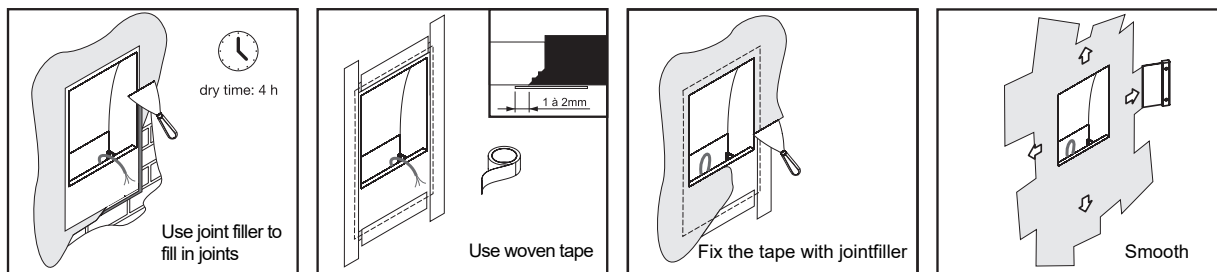
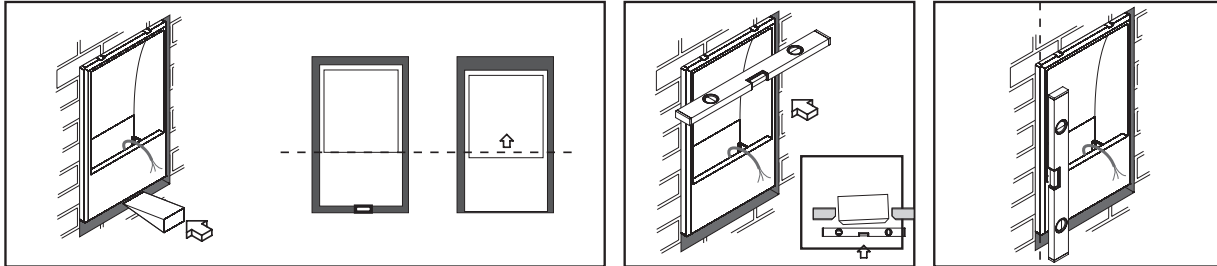
Step 30: Smooth the surface.

Additional Notes:

- If you prime the plaster for the first time dilute the paint about 15%
- If you prime the plaster for the second time, we recommend to dilute the paint about 5%
- It is the contractor's responsibility to install Remote Driver in a suitable electrical enclosure.



M



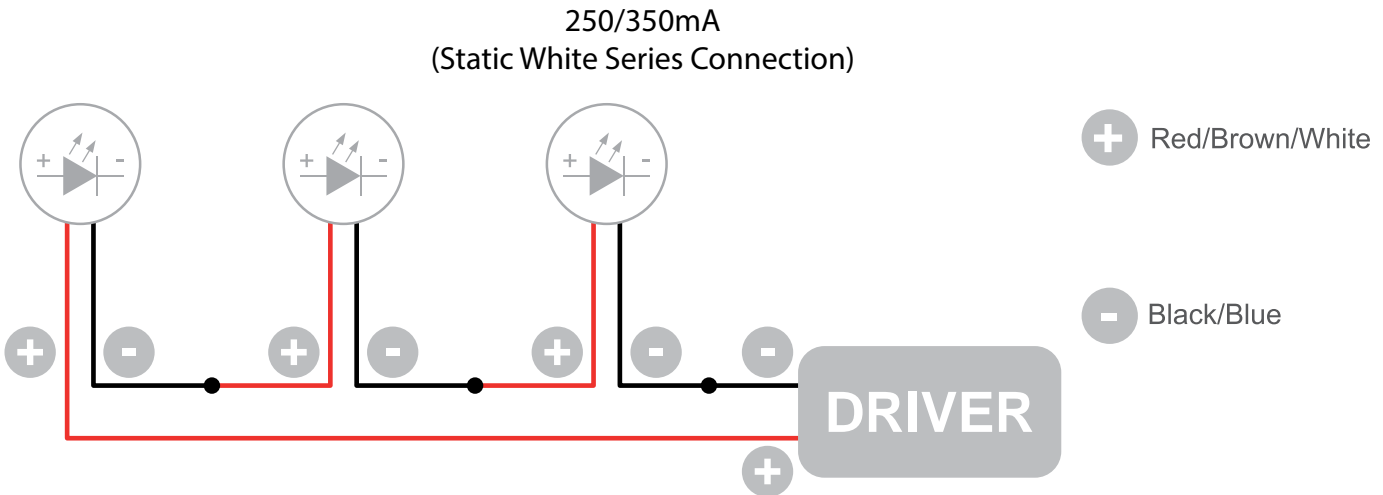
Use wire-nuts for wire connections.


If you prime the plaster for the first time dilute the paint about 15%

If you prime the plaster for the second time, we recommend to dilute the paint about 5%

- It is the contractor's responsibility to install Remote Driver in a suitable electrical enclosure.

Wiring Diagram



 The individual lamps must be connected in series.
Only power up the system once all the lamps have been connected.

- LED lights work at constant current. When choosing a power supply unit, you need to consider the current! by which the LEDs are driven and their maximum power consumption.
- Only power up the system once all the lamps are connected. Connecting an individual lamp to an active power supply may cause the lamp to break due to over-voltage.
- The electronic power supply is constant current, so to a certain extent it automatically compensates the! voltage drop associated with cable length; however, we advise not exceeding 100 feet.
- Lamps and power supply units must be installed in well-ventilated boxes or locations to allow a natural heat diffusion and avoid the devices overheating.
- On the power system, install a surge protection device to reduce the intensity of any voltage spikes, to! protect the lighting fixtures from the risk of damage.
- Fixture NOT suitable for covering with thermally insulating material.