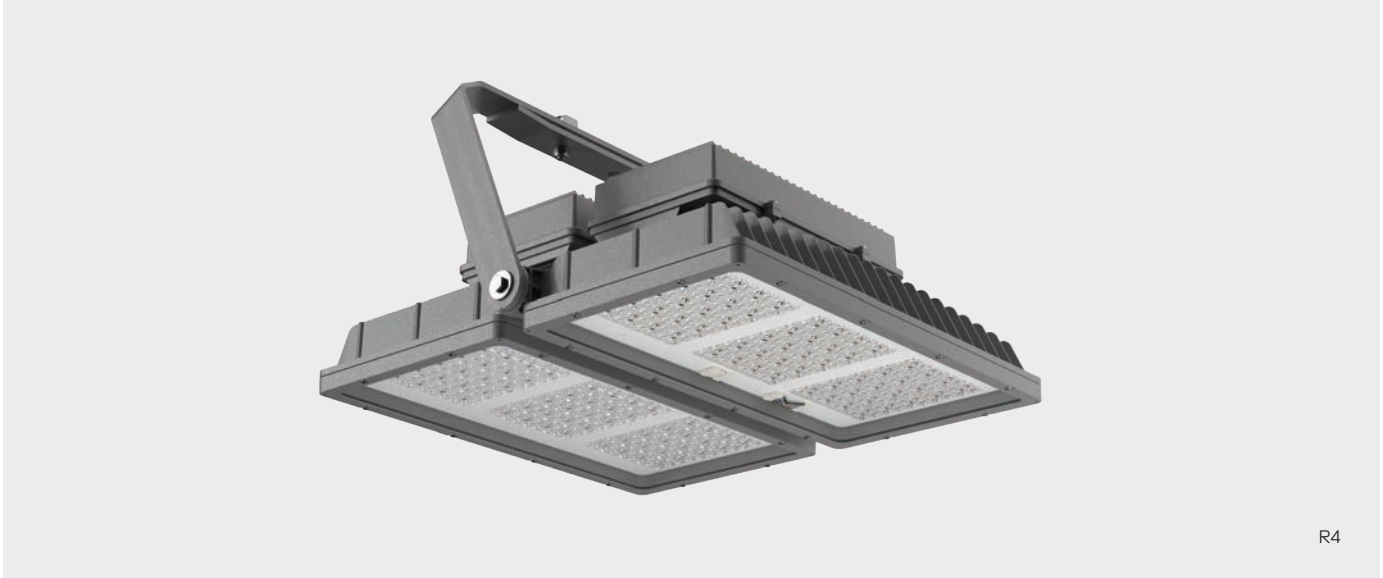
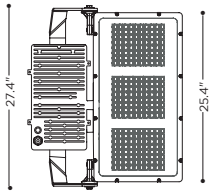
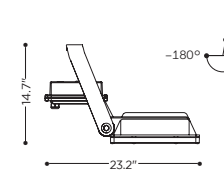
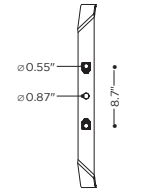
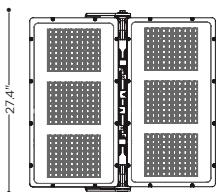
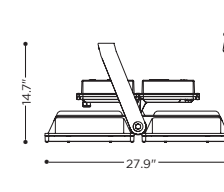
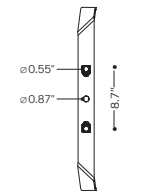
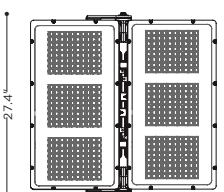
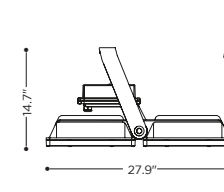
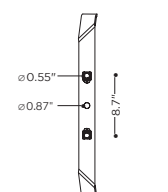


R-System gen3

A-Series



R4

<p>R2</p> <p>52.91 lbs (incl. bracket 7.05 lbs) + 4.41 lbs driver (optional, internal or external)</p> <p>↓^① = 3.55 →^② = 1.18° / 1.29° / 1.61°***</p>			
<p>R4 (two driver boxes)</p> <p>89.29 lbs (incl. bracket 7.05 lbs) + 9.92 lbs driver (internal)</p> <p>↓^① = 4.84 →^② = 1.40° / 1.72° / 3.34°***</p>			
<p>R4 (a driver box)</p> <p>81.6 lbs (incl. bracket 7.05 lbs) + 9.92 lbs driver (external)</p> <p>↓^① = 4.84 →^② = 1.29° / 1.61° / 3.01°***</p>			

Model	Luminous Flux [lm]	Max. Power [W]	Current Feed [mA]	LEDs
R2 (A-Series)	96,000	748	1,000	240
R4 (A-Series)	193,000	1,496	1,000	480

① Projected windage area [ft²] ② Lateral windage area [ft²] *Tilt 0° **Tilt 5° ***Tilt 30°

Models



R2 (Driver installed)



R4 (two driver installed)



R2 (one external driver, with optional driver box)



R4 (two external drivers, with optional driver boxes)

- Current feed: up to 1,000 mA, depending on ambient temperature
- Allowed ambient temperature range: -40 to +45 °C
- Lifetime: L80B10 > 100,000 h
- Electronic operating device with DALI2 or Push-Dimm, built into the floodlight or mounted externally
- Constant lumen output (CLO) available upon request
- Smart Lighting: control modules for different communication standards available upon request
- Various light distributions for large-area, high bay, halls and streets
- Lens made with UV-stabilised polycarbonate (AG), oder PMMA (AP, AS, AH)
- Cover in single-pane safety glass (ESG)
- Luminaire housing in die-cast aluminum
- Bracket made of hot-dip galvanised steel, stepless adjustment
- On request with a 360° swivelling bracket for floor, wall and ceiling mounting
- Finish: polyester powder coating, white aluminium (RAL 9006 / DB 701)

IP66 RoHS IK08 277VAC 50 / 60 Hz



Accessory



360° Swivel-mounted bracket



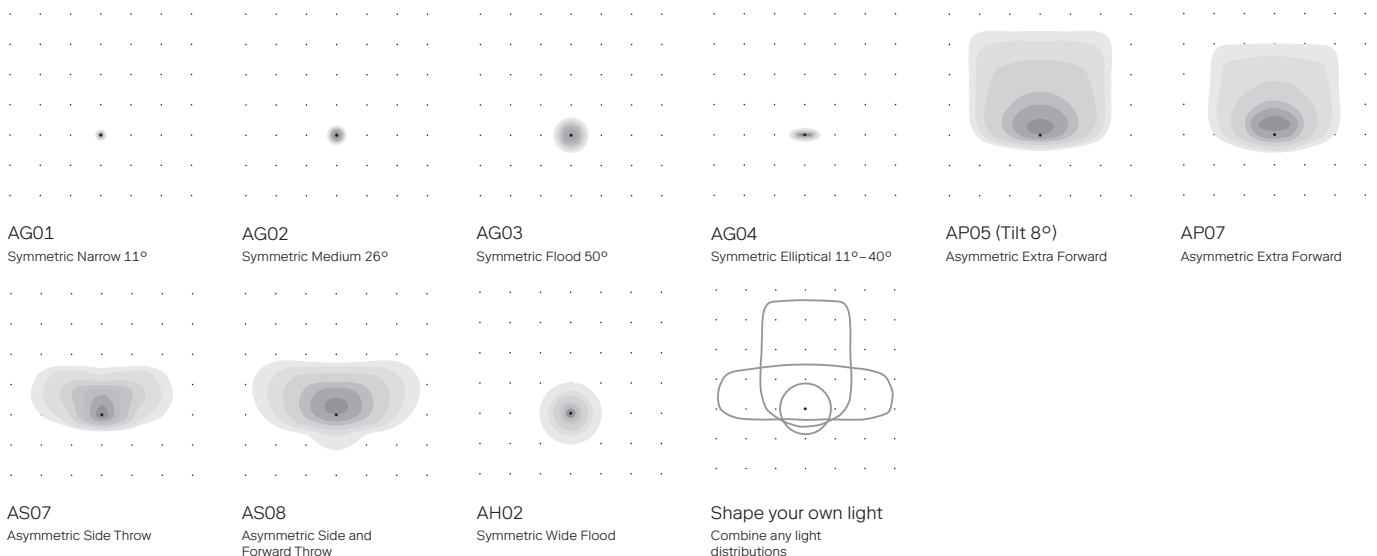
Driver box

Color Temperatures



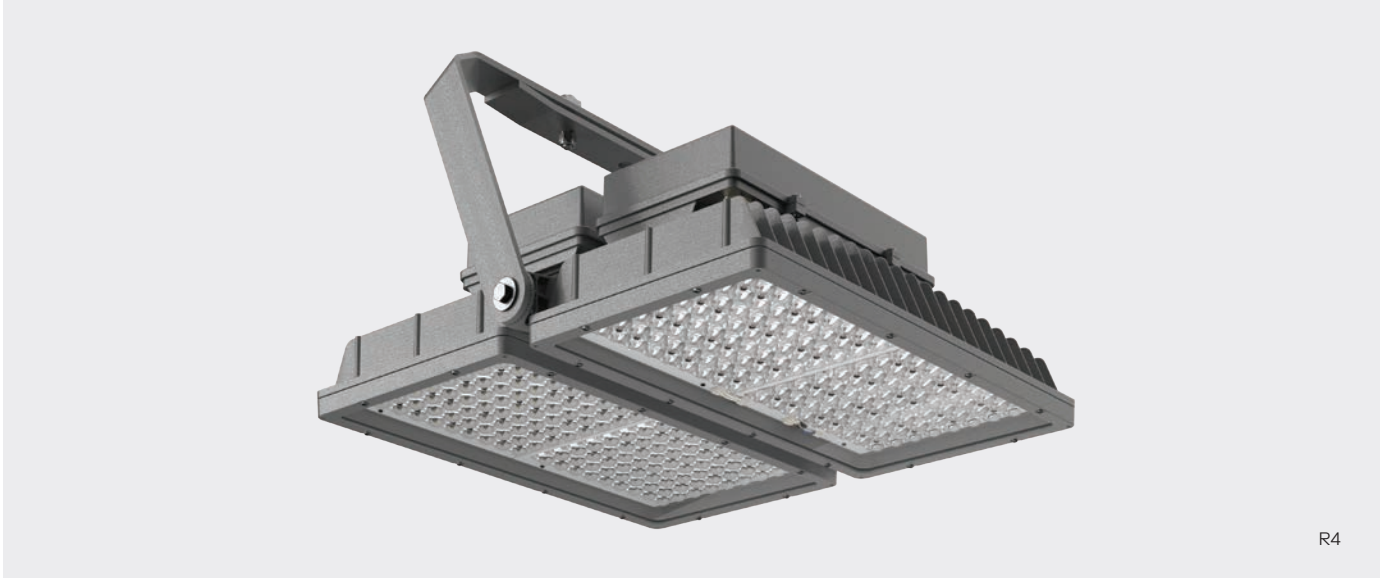
Standard CRI ≥ 70, CRI ≥ 80 upon request

Light Distributions



R-System gen3

E-Series

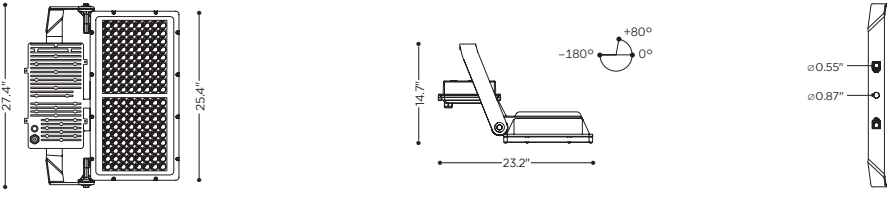


R4

R2

52.91 lbs (incl. bracket 7.05 lbs)
 + 4.41 lbs driver (optional, internal or external)
 + 3.31 lbs full-cut-off visor

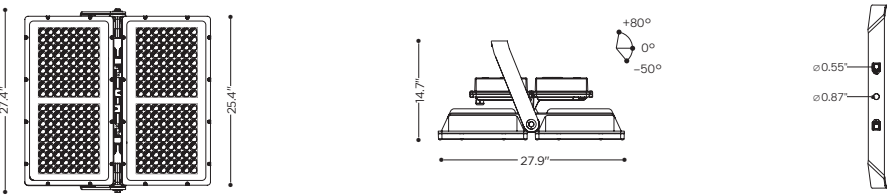
↓ θ = 3.55
 → θ = 1.18° / 1.29° / 1.61°***



R4 (two driver boxes)

89.29 lbs (incl. bracket 7.05 lbs)
 + 9.92 lbs driver (internal)
 + 4.41 lbs full-cut-off visor

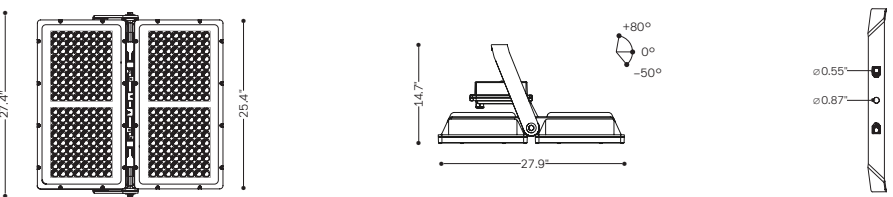
↓ θ = 4.84
 → θ = 1.40° / 1.72° / 3.34°***



R4 (one driver box)

81.57 lbs (incl. bracket 7.05 lbs)
 + 9.92 lbs driver (external)
 + 4.41 lbs full-cut-off visor

↓ θ = 4.84
 → θ = 1.29° / 1.61° / 3.01°***



Model	Luminous Flux [lm]	Max. Power [W]	Current Feed [mA]	LEDs
R2 (E-Series)	89,500	807	1,850	144
R4 (E-Series)	179,000	1,614	1,850	288

Models



R2 (Driver installed)



R4 (two drivers installed)



R2 (one external driver, with optional driver box)



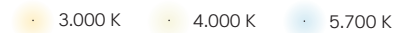
R4 (two external drivers, with optional driver boxes)

- Current feed: up to 1,850 mA, depending on ambient temperature
- Allowed ambient temperature range: -40 to +45 °C
- Lifetime: L80B10 > 100,000 h
- Product compatible with A-Series and E-Series
- Electronic operating device with DALI2 or Push-Dimm
- Constant lumen output (CLO) available upon request
- Smart Lighting: control modules for different communication standards available upon request
- Various light distributions for airports, harbours, logistics centers and sports facilities
- Lens made with UV-stabilised polycarbonate
- Cover in single-pane safety glass (ESG)
- Luminaire housing in die-cast aluminium
- Bracket made of hot-dip galvanised steel, stepless adjustment
- On request with a 360° swivelling bracket for floor, wall and ceiling mounting
- Finish: polyester powder coating, white aluminium (RAL 9006 / DB 701)

IP66 RoHS IK08 277VAC 50 / 60 Hz



Colour Temperatures



Standard CRI ≥ 70, CRI ≥ 80 upon request

Accessory



360° Swivel-mounted bracket



Driver box



Full-cut-off visor, for R2, Tilt 7°

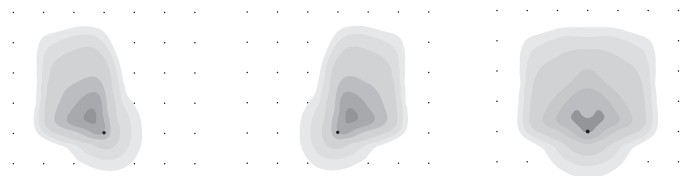


Full-cut-off visor for R4, Tilt 7°



Reduction of the back light through adequate shielding (RBL)

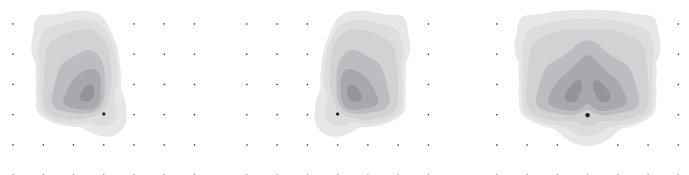
Light Distributions



EP09-L (Tilt 5°)
Asymmetric Extra Forward – Left

EP09-R (Tilt 5°)
Asymmetric Extra Forward – Right

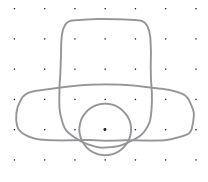
EP09-L/R (Tilt 5°)
Asymmetric Extra Forward – Left/Right



EP09-L (RBL*)
Asymmetric Extra Forward – Left

EP09-R (RBL*)
Asymmetric Extra Forward – Left

EP09-L/R (RBL*)
Asymmetric Extra Forward – Left/Right



Shape your own light
Combine any light distributions

* RBL = Reduced Backlight