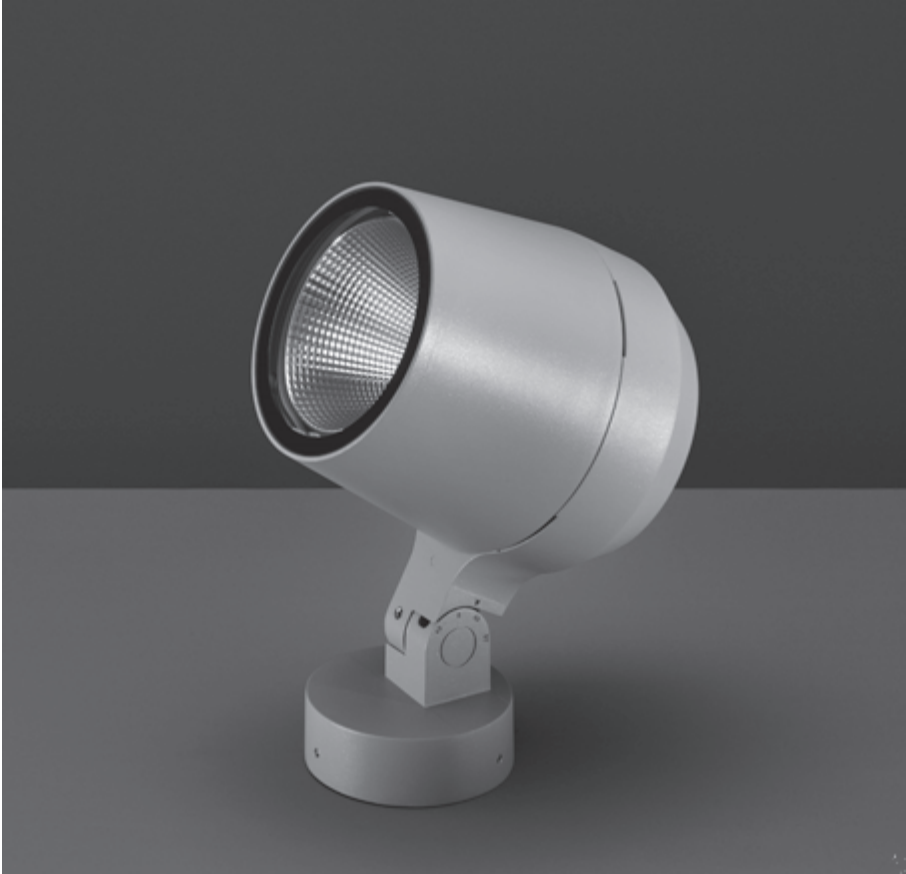


**Technical features**

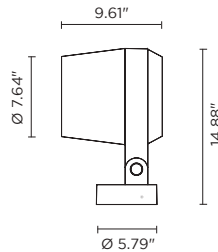


101407P

# RING MEGA COB





Designed by  
NAVA + AROSIO

Floodlight for outdoor installation on a façade/wall, with 355° swivel base and allowing horizontal adjustment of +90° / -40°. Phospho-chromatized and polyester powder coated die-cast copper-free aluminum base and head, tempered safety glass, molded silicone gaskets and o-rings, with screws in stainless steel. Swivel joint with graduated scale and mechanical aiming lock. Built-in LED driver, with 1 COB CREE “CXB 3590” LED. IP66 rating.



**Technical data**

Wattage	82W
IP Rating	IP66
IK Rating	IK10
Material	High corrosion resistance die-cast copper-free aluminum body
Coating	Polyester powder coating with phosphochromating pre-finish
Light source	1 x CREE “CXB 3590” LED
Screws	Stainless steel
Transformer	Electrical power supply built-in
Gasket	Silicone rubber
Glass	Tempered
Power cable	3.28' power cable included
Gross weight	17.6 lbs

light source	light beam options	lumen output (lm)	lumin. efficacy (lm/w)
<b>3000°K warm-white</b>			
cob led	 20°	10,100	123.17
cob led	 40°	10,020	122.20
<b>4000°K neutral-white</b>			
cob led	 20°	10,200	124.39
cob led	 40°	10,120	123.42

**Finish color options:**

-  Textured Grey RAL 9006
-  Anthracite Grey RAL 7016
-  Matte Black (on request)

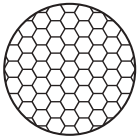


## OTHER VIEW



## OPTIONAL

AC087  
HONEYCOMB  
LOUVER



AC086  
ANTI-GLARE  
VISOR



AC103  
SPIKE

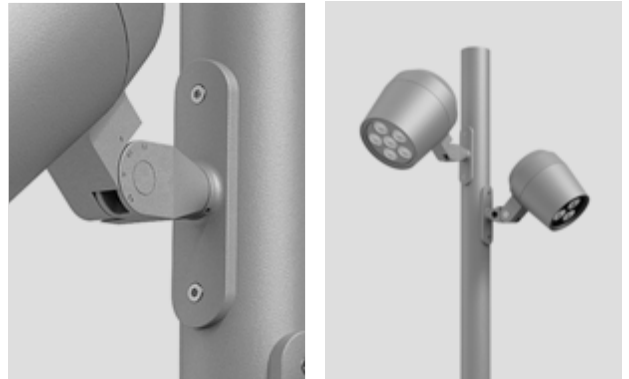


## OPTIONAL

LUMINAIRE SUITABLE FOR POLE MOUNTING  
IN SINGLE OR MULTIPLE COMBINATIONS

### AC085 - POLE PLATE

Pole plate for pole mounting of all Ring models, suitable to be used with poles diam. min 2.99" and diam. max 4.72". Can be positioned on various staggered levels or on a single level, with the same pole. Made in phospho-chromatized and polyester powder coated die-cast copper-free aluminum material, molded silicone gaskets and screws in stainless steel.



### AC089 - TREE-BRANCH BRACKET

Special bracket for Ring Mega pole mounting, suitable to be used with poles diam. min 2.99" and diam. max 4.72". Can be positioned on various staggered levels or on a single level, with the same pole. Made in phospho-chromatized and polyester powder coated die-cast copper-free aluminum material, molded silicone gaskets and screws in stainless steel.

