



Technical features



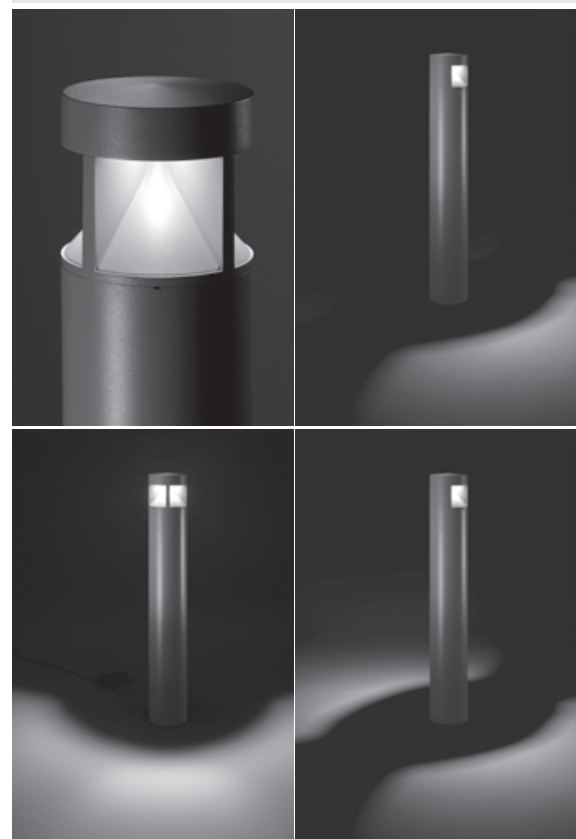
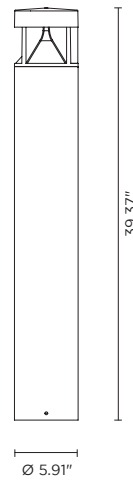
Technical data

IP Rating	IP66
IK Rating	IK10
Material	High corrosion resistance extruded copper-free aluminum body
Coating	Polyester powder coating with phosphochromating pre-finish
Screws	Stainless steel
Transformer	Electrical power supply 120VAC 50/60Hz built-in
Gasket	Silicone rubber
Glass	Tempered
Power cable:	3.28 feet included
Gross weight	17.64 lbs

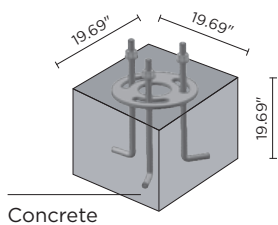
601709P-12P

SECTOR 1000

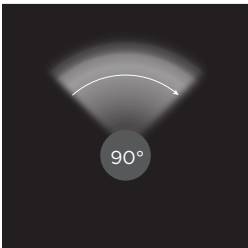
39.37" height bollard, round shape, for outdoor surface installation, from 1 to 4 light window, phospho-chromatized and polyester powder coated extruded copper-free aluminum body, opaline tempered glass, molded silicone gasket and stainless steel screws. Built-in LED driver 120VAC 50-60Hz, with NR. 1 x CREEXHP70 LED. IP66 rating.



AC053 - Base Plate



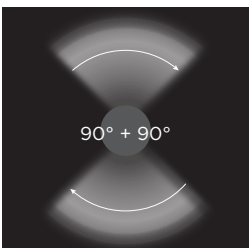
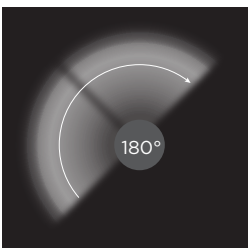
601709P	SECTOR 1000 01 - 6 WATT 120VAC 50-60 HZ		
light source*	light beam options	lumen output (lm)	lumin. efficacy (lm/w)
3000°K warm-white			
high power led	90°	533	88.83
4000°K neutral-white			
high power led	90°	550	91.66



Colors options

- Textured Grey RAL 9006
- Anthracite Grey RAL 7016
- Matte Black (on request)

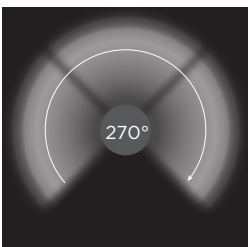
601710P	SECTOR 1000 02 - 12 WATT 120VAC 50-60 HZ		
light source*	light beam options	lumen output (lm)	lumin. efficacy (lm/w)
3000°K warm-white			
high power led	180° or 90° + 90°	1.067	88.92
4000°K neutral-white			
high power led	180° or 90° + 90°	1.100	91.66



Colors options

- Textured Grey RAL 9006
- Anthracite Grey RAL 7016
- Matte Black (on request)

601711P	SECTOR 1000 03 - 18 WATT 120VAC 50-60 HZ		
light source*	light beam options	lumen output (lm)	lumin. efficacy (lm/w)
3000°K warm-white			
high power led	270°	1.600	88.88
4000°K neutral-white			
high power led	270°	1.650	91.66



Colors options

- Textured Grey RAL 9006
- Anthracite Grey RAL 7016
- Matte Black (on request)

601712P	SECTOR 1000 04 - 24 WATT 120VAC 50-60 HZ		
light source*	light beam options	lumen output (lm)	lumin. efficacy (lm/w)
3000°K warm-white			
high power led	360°	2.134	88.91
4000°K neutral-white			
high power led	360°	2.200	91.66



Colors options

- Textured Grey RAL 9006
- Anthracite Grey RAL 7016
- Matte Black (on request)