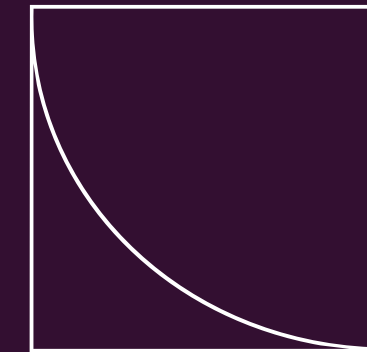
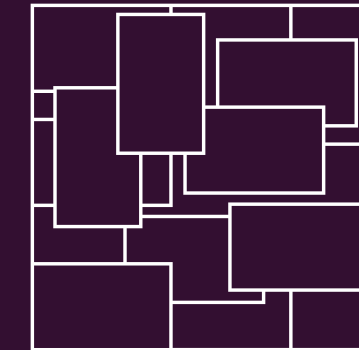
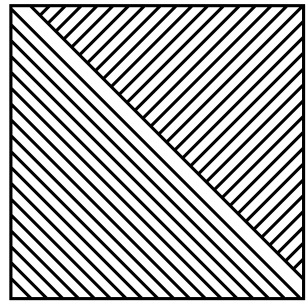


TILES

Num lighting modular tiles have a magnetic back designed to be flexible in creating a unique and custom layout. Once mounted, our modular panels can be removed from their backing and rotated 90, 180 or, 270 degrees, creating a new light-scape which is customized suited to the user's taste. The tile-based system is flexible in layout and is easily assembled.

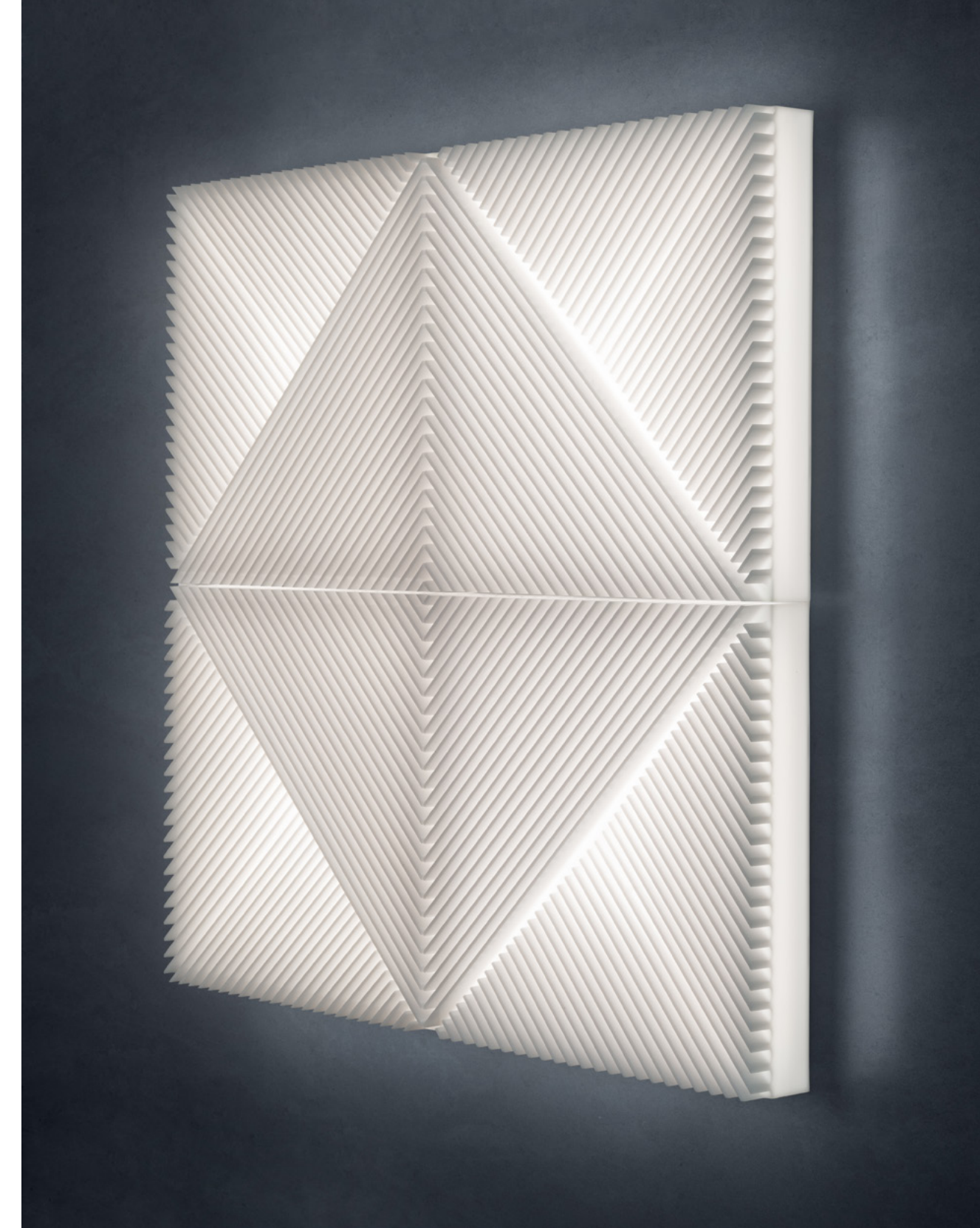




DECO TILE

Inspired by the geometry of the Art Deco style, the Deco tile showcases divergent diagonal lines. When viewed from different angles, the edges of the Deco tile become emboldened or hidden, giving the tile an entrancing appearance.





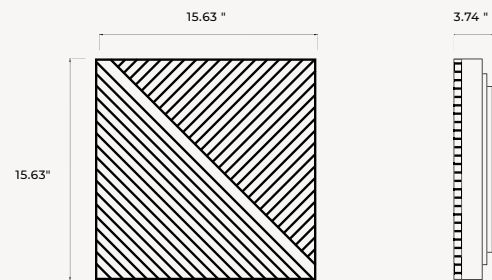
DECO

TILE | CEILING WALL LIGHT

120VAC | 20W

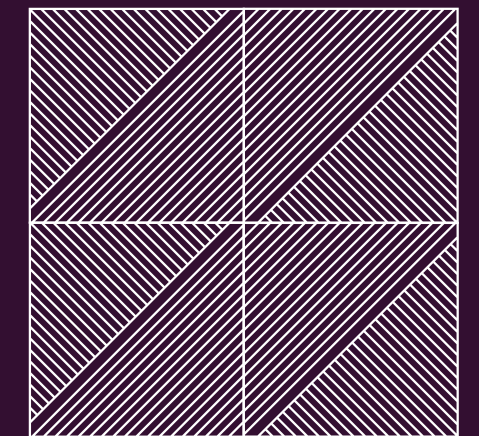
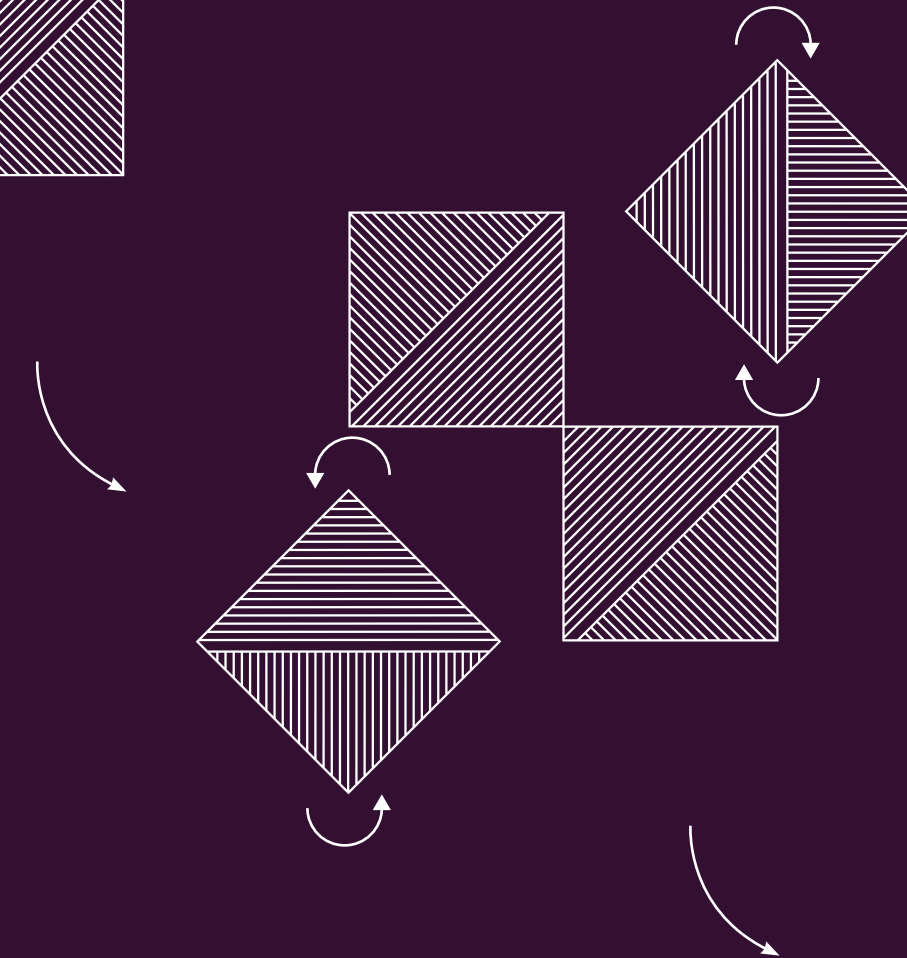
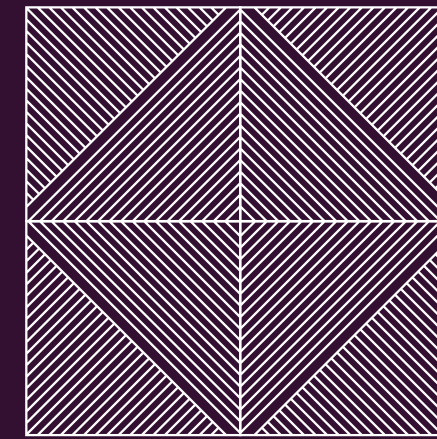


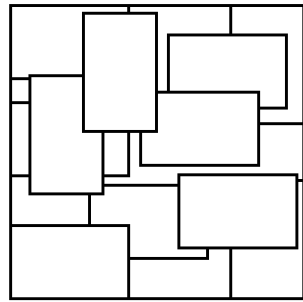
	finish	led			optics
■ N8200	black	CRI 90	3000K	600 lm	diffused
□ N8201	white	CRI 90	3000K	1200 lm	diffused
■ N8204	black	CRI 90	4000K	675 lm	diffused
□ N8205	white	CRI 90	4000K	1300 lm	diffused



Materials: Polycarbonate

MAGNETIC BACK DESIGNED
TO BE FLEXIBLE IN CREATING
A UNIQUE AND CUSTOM PATTERN





CUBOIDS TILE

The first design produced by Num Lighting, the Cuboid tile showcases rectangles that appear to be suspended in space when illuminated by its panel of LEDs. The Cuboid tile has a mesmerizing view due to its timeless combinations of geometric shapes.





11 NUM / designplan lighting, inc



Elemento showroom | Photography: Daniel Lailah

CUBOIDS

TILE | CEILING WALL LIGHT

120VAC | 20W

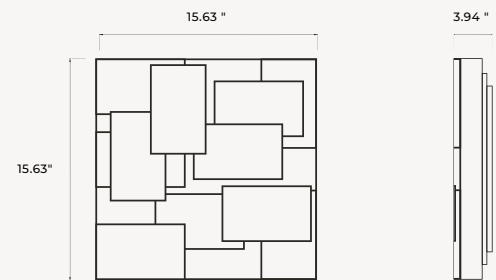


led

<input type="checkbox"/> N8206	CRI 90	3000K	2000 lm
<input type="checkbox"/> N8210	CRI 90	4000K	2200 lm

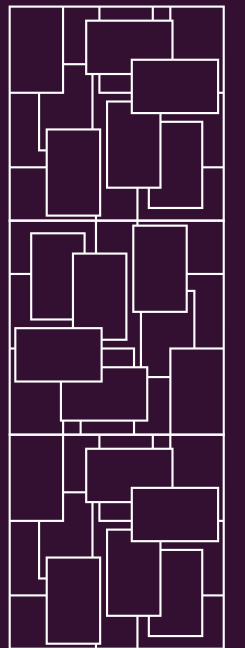
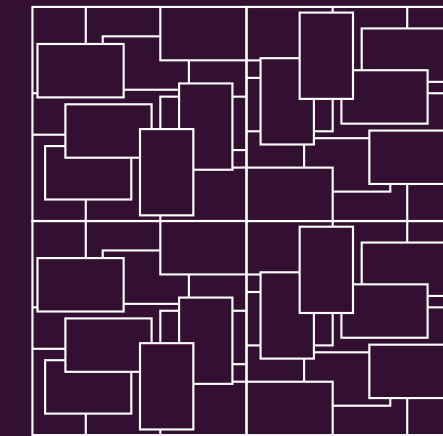
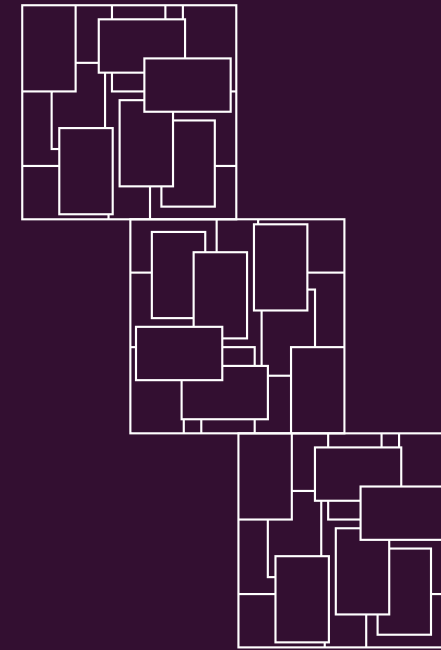
optics

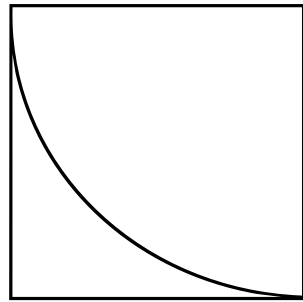
diffused
diffused



Materials: Polycarbonate

LAYOUT SUGGESTIONS

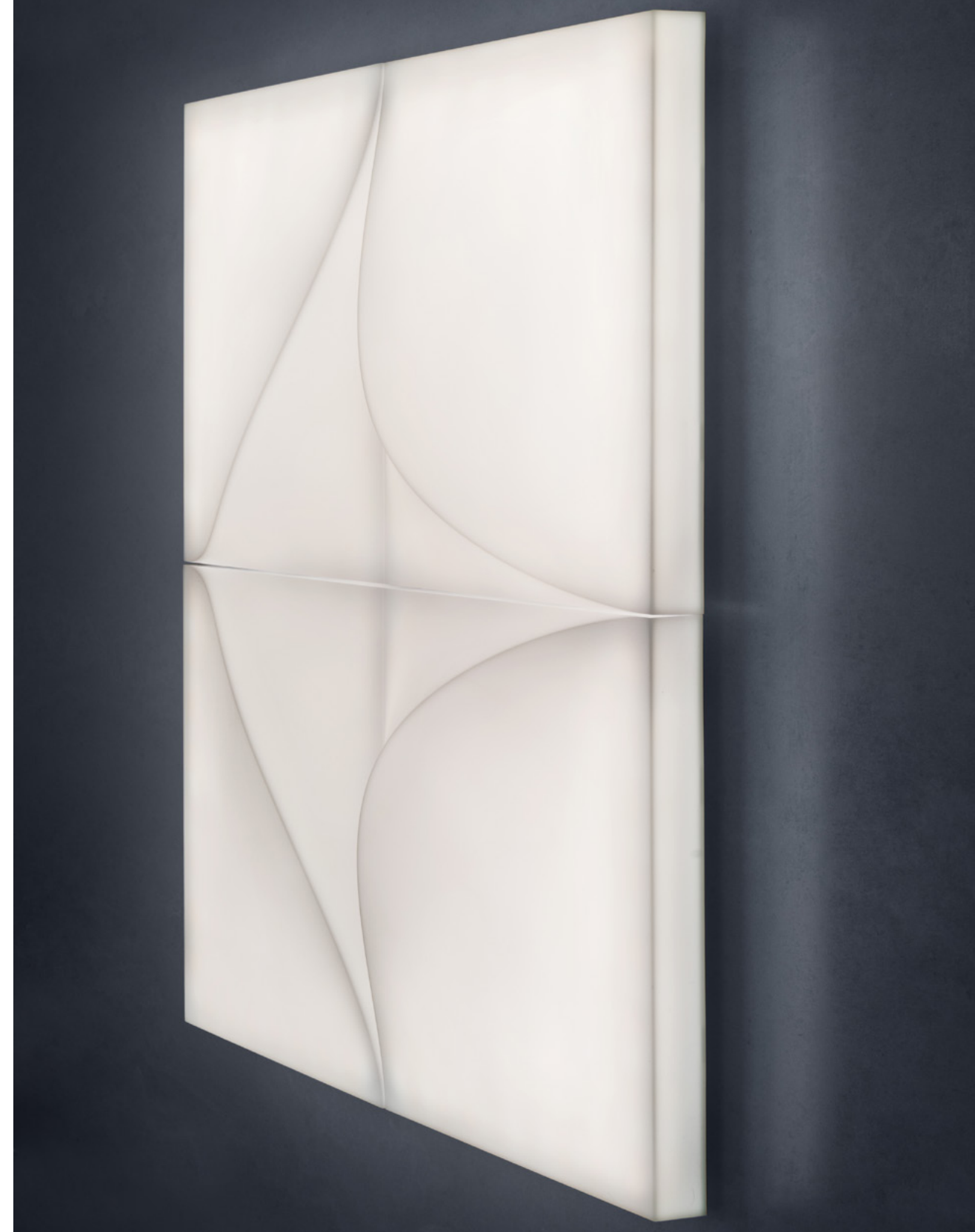
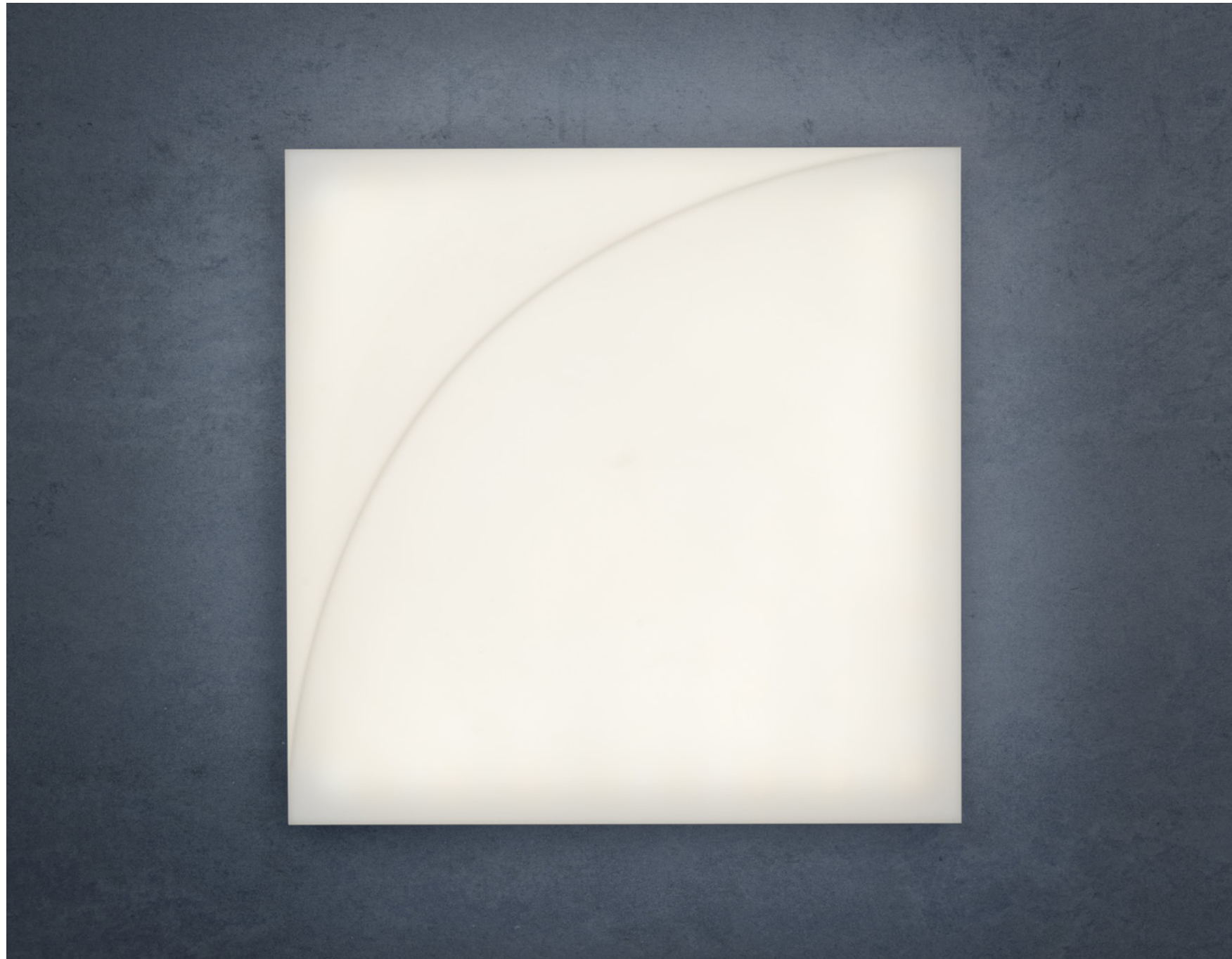




DUNE TILE

The soft 3-D curves of the Dune tile communicate an organic element which becomes dynamic when viewed from different angles. The smooth tone of the tile gives the room a tranquil feel when turned on or off.





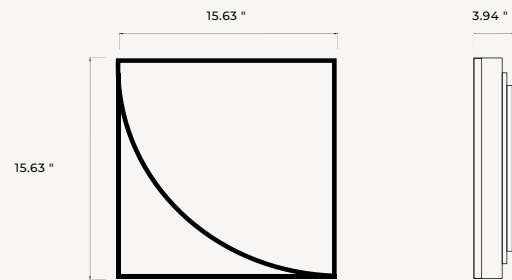
DUNE

TILE | CEILING WALL LIGHT

120VAC | 20W



	led			optics
<input type="checkbox"/> N8212	CRI 90	3000K	2400 lm	diffused
<input type="checkbox"/> N8216	CRI 90	4000K	2600 lm	diffused



Materials: Polycarbonate

COMPOSITION SUGGESTIONS

