

Technical features

IP66

IK10

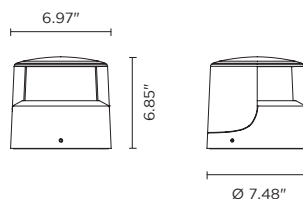
0-10V

NEW

602101P

TRON 180

Low height bollard, round shape, for outdoor surface installation, 180° downward light emission, phospho-chromatized and polyester powder coated die-cast aluminum body, ultra-resistant polycarbonate diffuser, molded silicone gasket and stainless steel screws. Built-in LED driver 120VAC 50-60Hz, with 1 x COB CREE "CXB 1520" LED. IP66 rating.





Technical data

Wattage	26W
IP Rating	IP66
IK Rating	IK10
Material	High corrosion resistance die-cast copper-free aluminum body
Coating	Polyester powder coating with phosphochromating pre-finish
Light source	NR. 1 x CREE CXB 1520 LED
Screws	Stainless steel
Transformer	Electrical power supply 120VAC 50/60Hz built-in
Gasket	Silicone rubber
Diffuser	Polycarbonate diffuser
Gross weight	8.82 lbs


AC053 - Base Plate



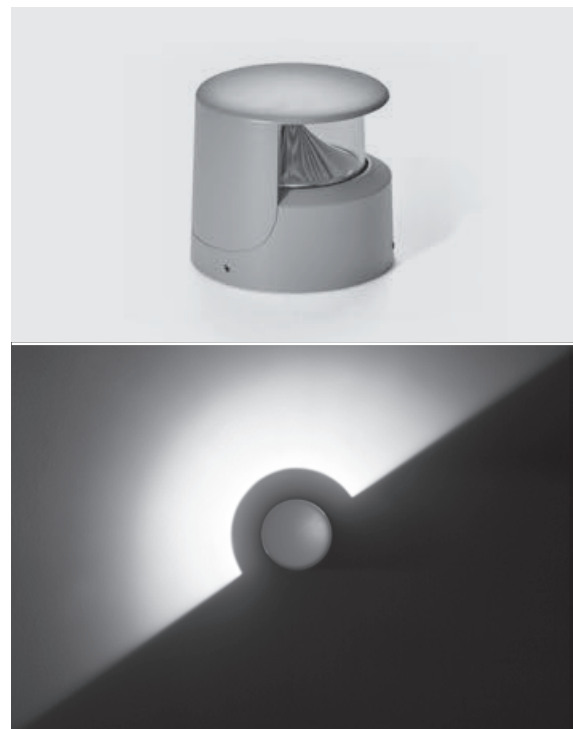
light source	light beam options	lumen output (lm)	lumin. efficacy (lm/w)
3000°K warm-white			
COB LED	 180°	1,100	42.30
4000°K neutral-white			
COB LED	 180°	1,150	44.23

Finish color options:

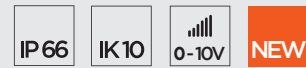
 Textured Gray RAL 9006

 Anthracite Gray RAL 7016

 Matte Black (on request)



Technical features



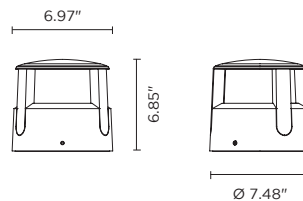
Technical data

Wattage	26W
IP Rating	IP66
IK Rating	IK10
Material	High corrosion resistance die-cast copper-free aluminum body
Coating	Polyester powder coating with phosphochromating pre-finish
Light source	NR. 1 x CREE CXB 1520 LED
Screws	Stainless steel
Transformer	Electrical power supply 120VAC 50/60Hz built-in
Gasket	Silicone rubber
Diffuser	Polycarbonate diffuser
Gross weight	8.82 lbs

602102P



TRON 360

Low height bollard, round shape, for outdoor surface installation, 360° downward light emission, phospho-chromatized and polyester powder coated die-cast aluminum body, ultra-resistant polycarbonate diffuser, molded silicone gasket and stainless steel screws. Built-in LED driver 120VAC 50-60Hz, with 1 x COB CREE "CXB 1520" LED. IP66 rating.



AC053 - Base Plate



light source	light beam options	lumen output (lm)	lumin. efficacy (lm/w)
3000°K warm-white			
COB LED	 360°	2,050	78.84
4000°K neutral-white			
COB LED	 360°	2,100	80.77

Finish color options:

