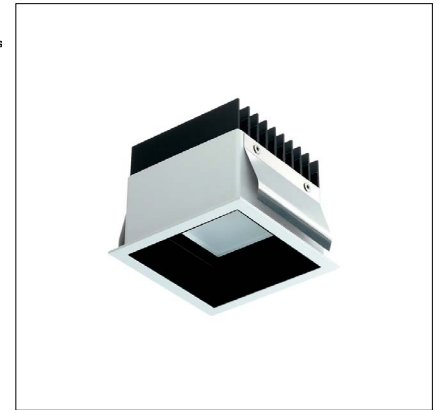


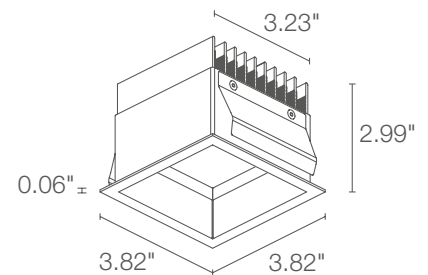
Turis is a family of recessed downlights perfect for general lighting. Featuring a simple, elegant square or round design, the Turis comes with diffuse optics that can be either flush or deep set.



## TECHNICAL DATA

<b>Wattage / Input</b>	11W, 15W (350mA)
<b>Power Supply</b>	Remote, not included. See page 2.
<b>Construction</b>	Body: Black Anodized Aluminum EN AW 6082 Trim: Steel Lens: Plexiglass Frosted on One Side
<b>CCT</b>	2700K, 3000K, 4000K
<b>CRI</b>	>90
<b>Delivered Lumens</b>	755 lm (3000K, 11W) 1117 lm (3000K, 15W)
<b>Efficacy</b>	68.6 lm/W (3000K, 11W) 74.5 lm/W (3000K, 15W)
<b>Optics</b>	Diffuse
<b>Finishes</b>	White, Black, Gray, Custom RAL
<b>Fixture Dimensions</b>	3.82" l x 3.82" w x 2.99" h
<b>Cut-out Size</b>	3.43" x 3.43"
<b>Fixture Weight</b>	1.57 lbs
<b>LED Source</b>	4 (11W), 6 (15W) Power LEDs
<b>Lumen Maintenance</b>	L80, B10 >50,000hrs (Ta 25°C)
<b>Color Consistency</b>	3-Step MacAdam
<b>Operating Temp.</b>	32°F to +113°F
<b>IP Rating</b>	IP40, IP44 Installed
<b>IK Rating</b>	-

Cut-Out Dimensions: 3.43" x 3.43"  
Fixture Dimensions



## ORDERING INFORMATION

Example: TU3211FDB. Accessories / Power Supplies ordered separately.

TU321			D	
Model No.	Wattage	CCT	Optics	Finish
TU321	1 - 11W 0 - 15W	F - 2700K 5 - 3000K 9 - 4000K	D - Diffuse	B - White N - Black G - Gray C - Custom RAL (consult factory for "C")

Job Name/Date:

Fixture Type Designation:

## SUGGESTED POWER SUPPLIES

350mA

Part Number	Description	Input/Output	# of Fixtures	
			11W	15W
<a href="#">PPLT00496</a>	Phase Dim (120V only)	120-277VAC to 350mA, 12W, Class 2	1-1	N/A
<a href="#">PPLT00465-P</a>	0-10V Dimming to 1.0%	120-277VAC to 350mA, 20W, Class 2	1-1	1-1
<a href="#">PPLT00263</a>	Leading / Trailing-Edge Dimming to 10% (120V only)	120-277VAC to 350mA, 32W, Class 2	1-1	1-1
<a href="#">PPLT00309-P</a>	0-10V Dimming to 0.1%	120-277VAC to 350mA, 50W, Class 2	1-2	1-1
<a href="#">PPLT00538-P</a>	0-10V Dimming to 0.1%	120-277VAC to 350mA, 100W, Class 2	1-8	1-4

### Suggested Lutron Compatible - 11W

Part Number	Option	Lutron SKU	Dim Range	Description	Input/Output	# of Fixtures
<a href="#">PPLT00271</a>	LTEA2W	LTEA	100%-1%	Hi-Lume™ 1% 2-Wire LED Driver (120V forward phase only)	120VAC to 350mA, 13W, Class 2	1-1
<a href="#">PPLT00516</a>	L3DAE / L3DA3W	L3DA	100%-1%	Hi-Lume™ 1% EcoSystem™ or 1% 3-Wire LED Driver	120-277VAC to 350mA, 13W, Class 2	1-1

### Suggested Lutron Compatible - 15W

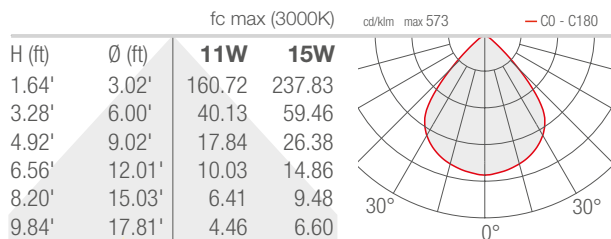
Part Number	Option	Lutron SKU	Dim Range	Description	Input/Output	# of Fixtures
<a href="#">PPLT00220</a>	LTEA2W	LTEA	100%-1%	Hi-Lume™ 1% 2-Wire LED Driver (120V forward phase only)	120VAC to 350mA, 19W, Class 2	1-1
<a href="#">PPLT00179</a>	L3DAE / L3DA3W	L3DA	100%-1%	Hi-Lume™ 1% EcoSystem™ or 1% 3-Wire LED Driver	120-277VAC to 350mA, 19W, Class 2	1-1

For other power supply options consult factory.

## PHOTOMETRIC DATA

Note all Photometry is 3000K

D - Diffuse



Job Name/Date:

Fixture Type Designation: