

Zhoom

TECHNICAL DATA

Description Zhoom
Design: Oberzaucher
Voltage: Constant Current
Max. 500mA
Power: 2W
Light source: LED



USER MANUAL

Installation and safety instructions

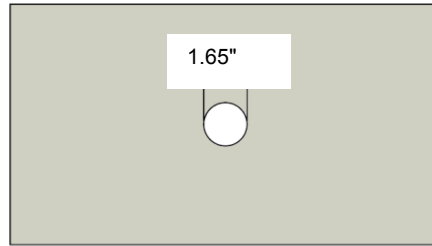
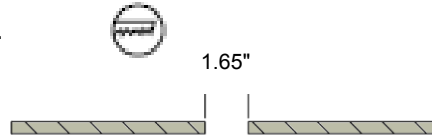
FAILURE TO FOLLOW THESE INSTRUCTIONS WILL VOID WARRANTY

RISK OF ELECTRICAL SHOCK. THIS EQUIPMENT IS TO BE INSTALLED BY A QUALIFIED ELECTRICIAN ONLY. MAKE CERTAIN ELECTRICAL SUPPLY CIRCUIT IS DE-ENERGIZED BEFORE BEGINNING INSTALLATION. CHECK FIXTURE LABEL FOR CORRECT VOLTAGE. READ ALL INSTRUCTIONS CAREFULLY.



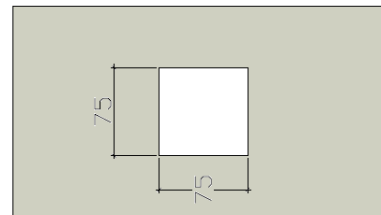
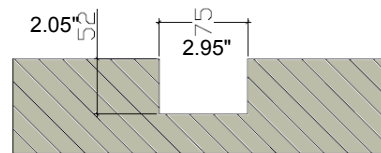
OPTION 1:

Sheetrock or board montage.



OPTION 2:

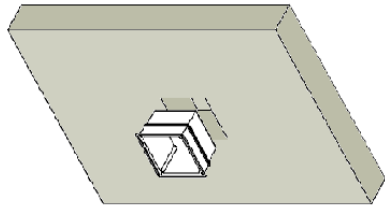
Brick.



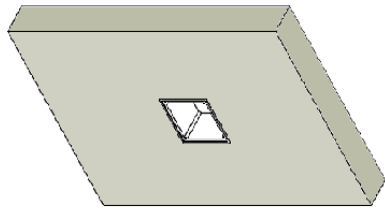
ATTENTION

remote transformer !
(see driver label for details)

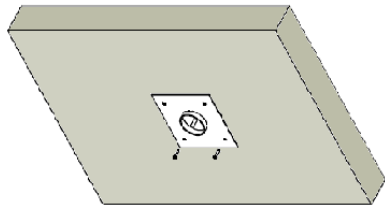
Cut-out for mounting set (Order flush box separatly / call factory for info) .



Step 1



Step 2



Step 3



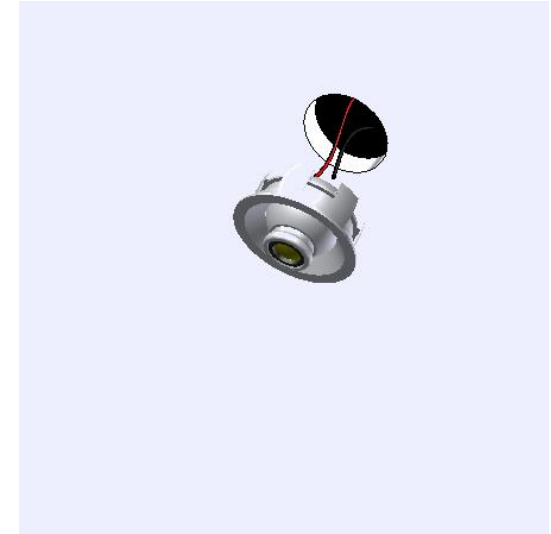
Step 4

Step 1 & 2: Insert the mounting set

Step 3: Screw the mounting frame on the mounting set.

Step 4: Plaster the wall.

OPTION 1:



Connect electrical power supply and insert the lamp.

OPTION 2:

