

BROADWAY BR150-W

Broadway BR are a series of versatile, IP66-rated, outdoor floodlights designed for landscape lighting. They are available in 3 different sizes, and offered in static white, tunable white, and RGBW and a variety of optics. BR150-W is the 150W static white version.

TECHNICAL DATA

Wattage	150W
Power Supply	Integral 120-277VAC
Dimming	0-10V Dimming, Bluetooth, DMX Control
Construction	Body: Aluminum Alloy Lens: PC + PMMA (Acrylic)
CCT	4000K (2200K, 3000K, 5000K optional)
BUG Rating	B4-U0-G0 (3.8°) B4-U1-G1 (60°)
Delivered Lumens	15000 lm (10500 lm with honeycomb film)
Efficacy	100 lm/W (70 lm/W with honeycomb film)
Optics	3.8°, 8°, 12°, 30°, 60°, 15x30°, 20x60°, 75°
Finishes	Silver
Fixture Dimensions	Ø17.72" x 17.79" x 6.30" (100W / 150W)
Fixture Weight	22.04 ± 0.66Lbs (100W / 150W)
Operating Temperature	-22°F to +122°F
LED Source	CREE-XPE2
Lumen Maintenance	48,000 hrs L80, B10 (Ta 25°C) 77,000 hrs L70, B10 (Ta 25°C)
IP Rating	IP66
Impact Resistance	IK08
Warranty	5 Years



Fixture Dimensions - See page 2.

ORDERING INFORMATION

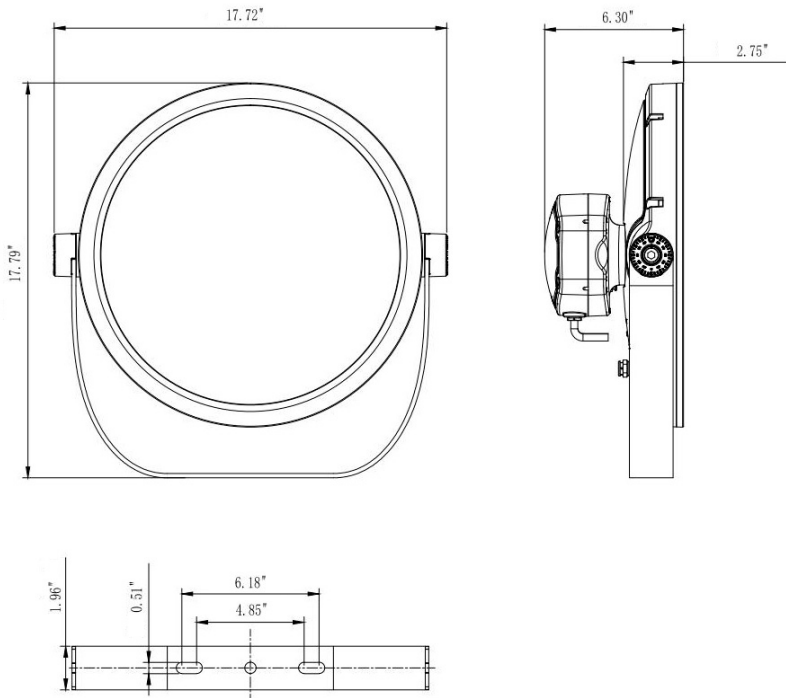
Example: BR150-W-4-S-F00114. Accessories sold separately - see page 2.

BR150-W	-		-		-		-	
Model No.	CCT	Finish	Optics	Options				
BR150-W	4 - 4000K (standard) 2 - 2200K 3 - 3000K 5 - 5000K	S - Silver C - Custom	F00110 - 3.8° F00118 - 8° F00111 - 12° F00113 - 30° F00114 - 60° F00115 - 15°x30° F00116 - 20°x60° F00117 - 75°					

Job Name/Date:

Fixture Type Designation:

100W / 150W



MOUNTING OPTIONS



BASE
MOUNTING



BRACKET
MOUNTING



EMBRACE HOOP
MOUNTING



GROUND
SPIKE
MOUNTING

ACCESSORIES



BC-F39-02
Visor
For 100W and
150W versions



CK-F39-01
Connector
For all
versions



MT-F39-02
Ground Spike
For 100W and
150W versions



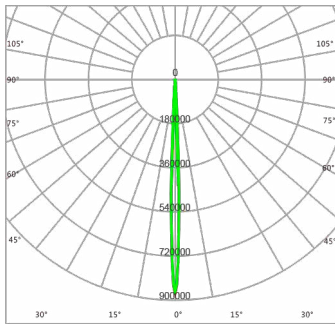
SL-F33-01
Clamp Bracket
For all
versions

Job Name/Date:

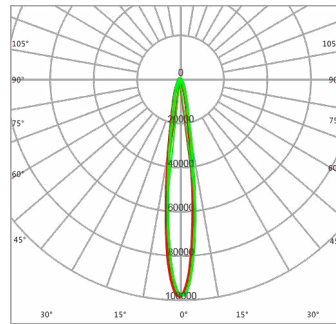
Fixture Type Designation:

PHOTOMETRIC DATA

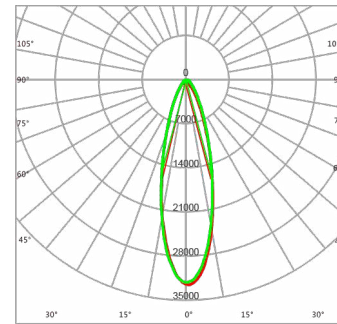
Note: Photometry is 4000K



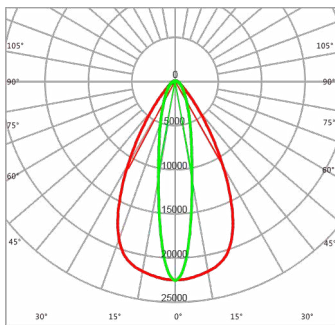
F00110



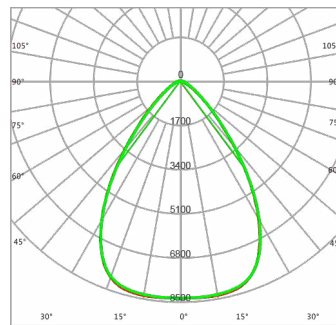
F00111



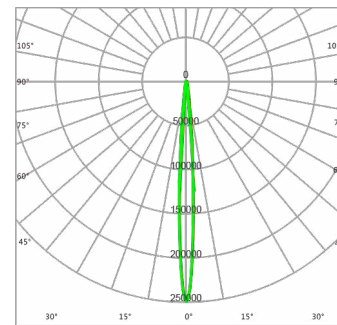
F00113



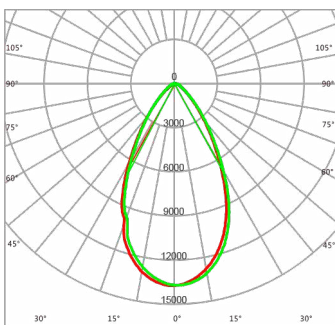
F00116



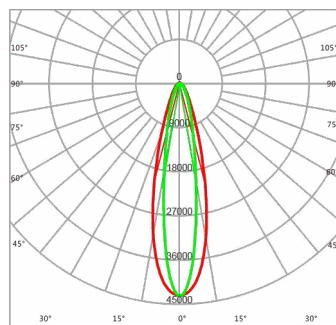
F00117



F00118



F00114



F00115

Job Name/Date:

Fixture Type Designation: