

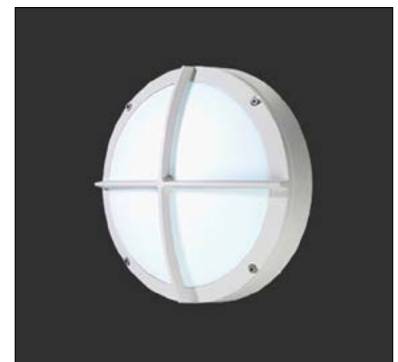
Cobalt is a circular, wall mounted, luminaire with a choice of four cover frame styles, suitable for outdoor installation to illuminate external pathways at schools, hospitals, retail, and other commercial environments. It is available in 3 wattages, 2 standard finishes and 4000K as standard. ADA compliant, ligature-resistant and emergency versions available.



Plain Cover - **All are ADA Compliant**
Fixture Dimensions - See page 2



Hood Cover



Grill Cover



Hood & Grill Cover

TECHNICAL DATA

Wattage	11W, 15W, 16W
Power Supply	Integral 120-277VAC (Non-Dimming)
Construction	Body/Cover Frame: High-Pressure Die-cast LM2 Aluminum Lens: High Efficiency Fire-retardant Satin Polycarbonate
CCT	4000K
CRI	>80
Delivered Lumens	1490 lm (11W - Plain) 2070 lm (16W - Plain) 1020 lm (15W - Hood)
Efficacy	135.5 lm/W (11W - Plain) 129.4 lm/W (16W - Plain) 68 lm/W (15W - Hood)
Optics	Diffuse
Finishes	Graphite polyester powder finish standard Silver or White finish on request
LED Source	LUX GUARD LED
Lumen Maintenance	100,000 hrs L80, B10
Fixture Dimensions	Ø13.4" x 4.5"
Fixture Weight	6.6 lbs (Plain or Hood) 7.1 lbs (Plain & Grill or Hood & Grill)
IP Rating	IP66
Impact Resistance	IK10

ORDERING INFORMATION

Example: CT19515.L.US. **Emergency versions available - use prefix ECT.**

	.	L	.		.	US
--	---	---	---	--	---	----

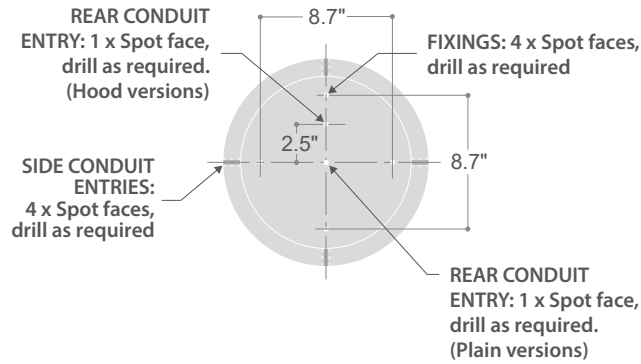
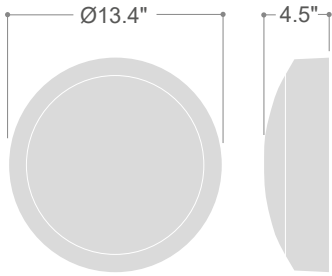
Model No.	Circuit Dimming	Finish Options	US
CT 19516 (11W - Plain)	L - Non-Dimming	SV3 - Silver	US
CT 19015 (15W - Hood)		W9 - White	
CT 19517 (16W - Plain)		Graphite - Standard (no code)	
CT 19518 (11W - Plain & Grill)			
CT 19016 (15W - Hood & Grill)			
CT 19519 (16W - Plain & Grill)			

Emergency Versions available - use prefix ECT

Job Name/Date:

Fixture Type Designation:

FIXTURE DIMENSIONS

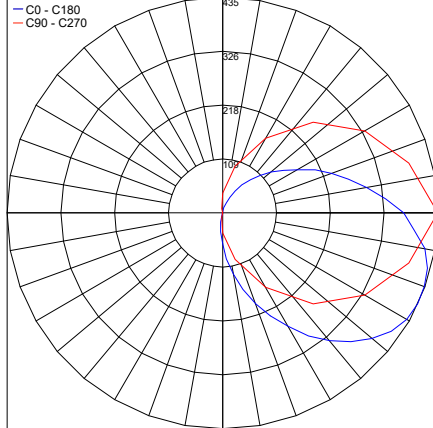


PHOTOMETRIC DATA

Note all Photometry is 4000K

15W-Plain

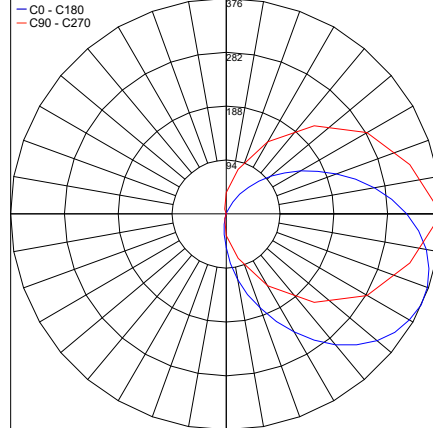
Maximum Candela = 435.3



PHOTOMETRIC FILENAME : CT19015 (15W - HOOD).IES

15W-HoodGrill

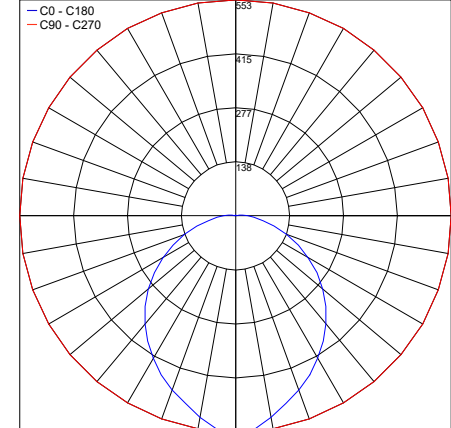
Maximum Candela = 375.5



PHOTOMETRIC FILENAME : CT19016 (15W - HOOD&GRILL).IES

11W-Plain

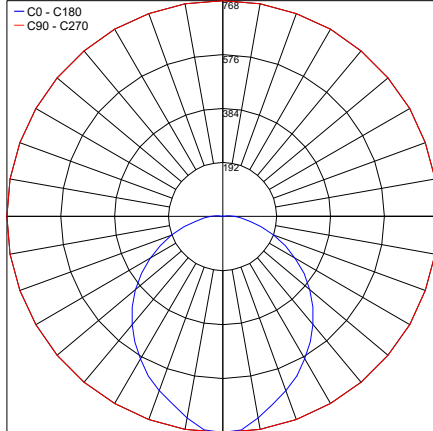
Maximum Candela = 553



PHOTOMETRIC FILENAME : CT19516 (11W - PLAIN).IES

16W-Plain

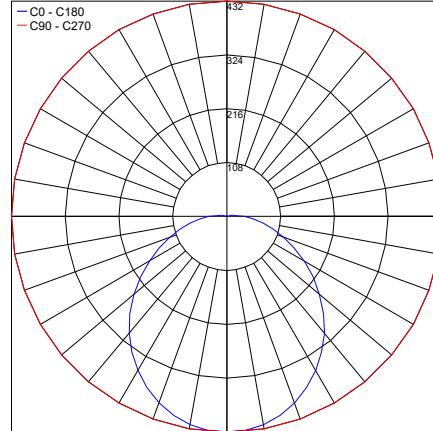
Maximum Candela = 768.2



PHOTOMETRIC FILENAME : CT19517 (16W - PLAIN).IES

11W-PlainGrill

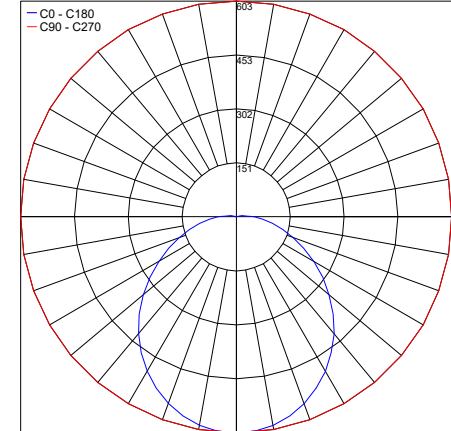
Maximum Candela = 432



PHOTOMETRIC FILENAME : CT19518 (11W - PLAIN & GRILL).IES

16W-PlainGrill

Maximum Candela = 603.4



PHOTOMETRIC FILENAME : CT19519 (16W - PLAIN & GRILL).IES

Job Name/Date:

Fixture Type Designation: