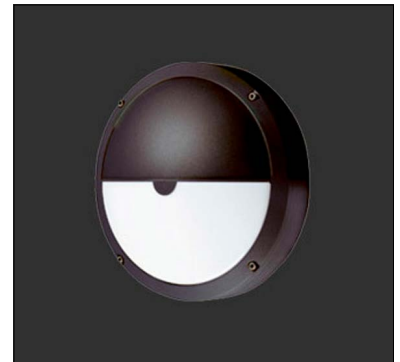


Cobalt is a circular, wall mounted, luminaire with a choice of four cover frame styles, suitable for outdoor installation to illuminate external pathways at schools, hospitals, retail, and other commercial environments. It is available in 3 wattages, 2 standard finishes and 4000K as standard. ADA compliant, ligature-resistant and emergency versions available.

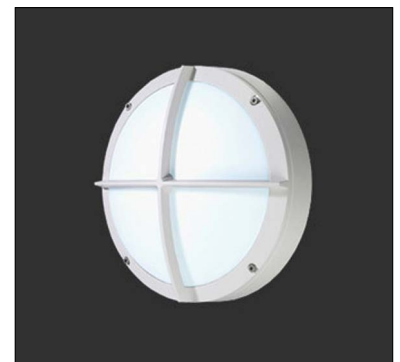


Plain Cover - **All are ADA Compliant**

Fixture Dimensions - See page 2



Hood Cover



Grill Cover



Hood & Grill Cover

TECHNICAL DATA

Wattage / Input	11W (500mA), 15W (400mA), 16W (700mA)
Power Supply	Remote, not included. See page 2.
Construction	Body/Cover: Die-cast LM2 Aluminum Lens: Fire-retardant Satin Polycarbonate
CCT	4000K
CRI	>80
BUG Rating	B1-U2-G1 (Plain) B0-U3-G2 (Hood / Grill) B1-U2-G1 (Plain / Grill)
Delivered Lumens	1490 lm (11W - Plain) 2070 lm (16W - Plain) 1020 lm (15W - Hood)
Efficacy	135.5 lm/W (11W - Plain) 129.4 lm/W (16W - Plain) 68 lm/W (15W - Hood)
Optics	Diffuse
Finishes	Graphite polyester powder finish standard Silver or White finish on request
LED Source	LUX GUARD LED
Lumen Maintenance	100,000 hrs L80, B10
Fixture Dimensions	Ø13.4" x 4.5"
Fixture Weight	6.6 lbs (Plain or Hood) 7.1 lbs (Plain & Grill or Hood & Grill)
IP Rating	IP66
Impact Resistance	IK10

ORDERING INFORMATION

Example: CT19515.L.US. **Emergency versions available - use prefix ECT.**

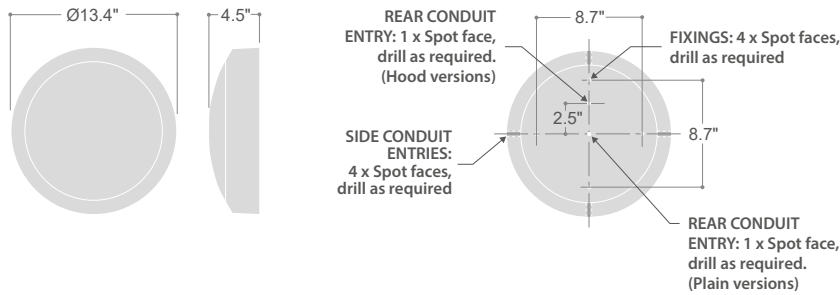
<input type="text"/>	<input type="text" value="L"/>	<input type="text"/>	<input type="text" value="US"/>
Model No.	Circuit	Finish Options	US
CT 19516 (11W - Plain)	L	SV3 - Silver	US
CT 19015 (15W - Hood)		W9 - White	
CT 19517 (16W - Plain)		Graphite - Standard (no code)	
CT 19518 (11W - Plain & Grill)			
CT 19016 (15W - Hood & Grill)			
CT 19519 (16W - Plain & Grill)			

Emergency Versions available - use prefix ECT

Job Name/Date:

Fixture Type Designation:

FIXTURE DIMENSIONS



SUGGESTED POWER SUPPLIES - 500mA

Part Number	Description	Input/Output	# of Fixtures - 11W
PPLT00465-P	0-10V Dimming to 1.0%	120-277VAC to 500mA, 20W, Class 2, DAMP	1-1
PPLT00527	Phase Dim (120V only)	120VAC to 500mA, 25W, Class 2, IP66	1-2
PPLT00262	Leading / Trailing Edge Dimming to 10% (120V only)	120-277VAC to 500mA, 32W, Class 2	1-1
PPLT00467-P	0-10V Dimming to 1.0%	120-277VAC to 500mA, 50W, Class 2, DAMP	1-2
PPLT00538-P	0-10V Dimming to 0.1%	120-277VAC to 500mA, 100W, Class 2	1-8

SUGGESTED POWER SUPPLIES - 400mA or 700mA

Part Number	Description	Input/Output	# of Fixtures	
			15W (400mA)	16W (700mA)
PPLT00465-P	0-10V Dimming to 1.0%	120-277VAC to 400mA or 700mA, 20W, Class 2, DAMP	1-1	1-1
PPLT00261	Leading / Trailing Edge Dimming to 10% (120V only)	120-277VAC to 700mA, 32W, Class 2	—	1-1
PPLT00467-P	0-10V Dimming to 1.0%	120-277VAC to 400mA or 700mA, 50W, Class 2, DAMP	1-1	1-2
PPLT00538-P	0-10V Dimming to 0.1%	120-277VAC to 400mA or 700mA, 100W, Class 2	1-4	1-4

Suggested Lutron Compatible - 500mA - 11W version only

Part Number	Option	Lutron SKU	Dim Range	Description	Input/Output	# of Fixtures
PPLT00195	L3DAE / L3DA3W	L3DA	100%-1%	Hi-Lume™ 1% EcoSystem™ or 1% 3-Wire LED Driver	120-277VAC to 500mA, 19W, Class 2	1-1
PPLT00676	PEQOE	PEQ0	100%-0.1%	Hi-Lume™ Premier 0.1% Dim EcoSystem™ LED Driver	120-277VAC to 500mA, 20W, Class 2	1-1
PPLT00180	L3DAE / L3DA3W	L3DA	100%-1%	Hi-Lume™ 1% EcoSystem™ or 1% 3-Wire LED Driver	120-277VAC to 500mA, 27W, Class 2	2-2

Suggested Lutron Compatible - 400mA or 700mA - 16W version only

Part Number	Option	Lutron SKU	Dim Range	Description	Input/Output	# of Fixtures
PPLT00635	PEQOE	PEQ0	100%-0.1%	Hi-Lume™ Premier 0.1% Dim EcoSystem™ LED Driver	120/277VAC to 400mA/700mA, 20W, Class 2	1-1
PPLT00673	PEQOE	PEQ0	100%-0.1%	Hi-Lume™ Premier 0.1% Dim EcoSystem™ LED Driver	120-277VAC to 400mA/700mA, 20W, Class 2	1-1
PPLT00517	L3DAE / L3DA3W	L3DA	100%-1%	Hi-Lume™ 1% EcoSystem™ or 1% 3-Wire LED Driver	120-277VAC to 400mA/700mA, 27W, Class 2	1-1
PPLT00181	L3DAE / L3DA3W	L3DA	100%-1%	Hi-Lume™ 1% EcoSystem™ or 1% 3-Wire LED Driver	120-277VAC to 400mA/700mA, 38W, Class 2	2-2

For other power supply options consult factory.

Job Name/Date:

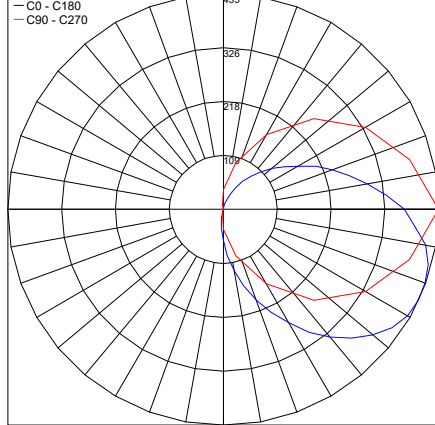
Fixture Type Designation:

PHOTOMETRIC DATA

Note all Photometry is 4000K

15W-Plain

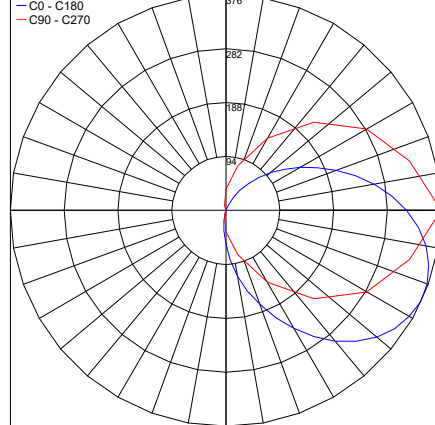
Maximum Candela = 435.3



PHOTOMETRIC FILENAME : CT19015 (15W - HOOD).IES

15W-HoodGrill

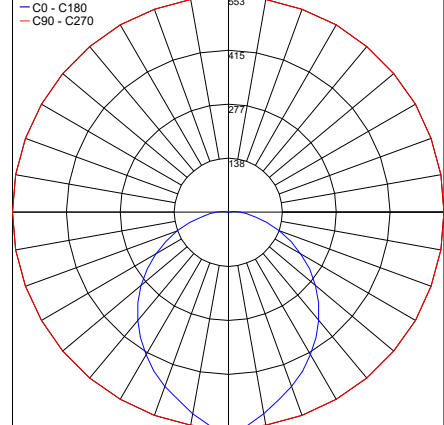
Maximum Candela = 375.5



PHOTOMETRIC FILENAME : CT19016 (15W - HOOD&GRILL).IES

11W-Plain

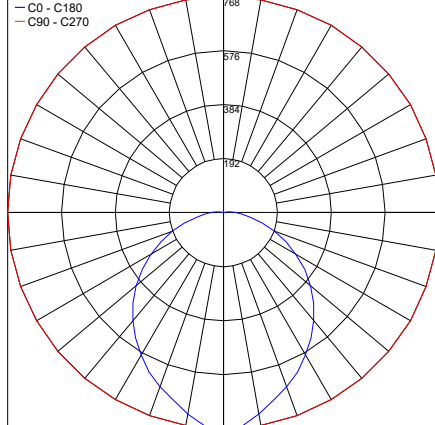
Maximum Candela = 553



PHOTOMETRIC FILENAME : CT19516 (11W - PLAIN).IES

16W-Plain

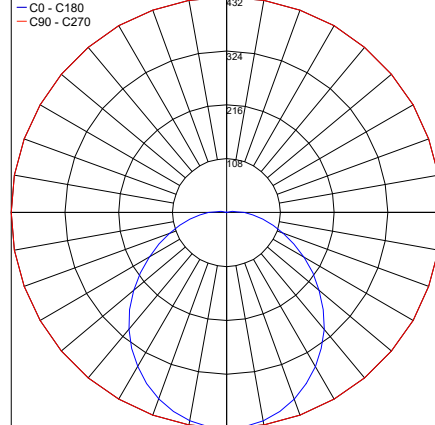
Maximum Candela = 768.2



PHOTOMETRIC FILENAME : CT19517 (16W - PLAIN).IES

11W-PlainGrill

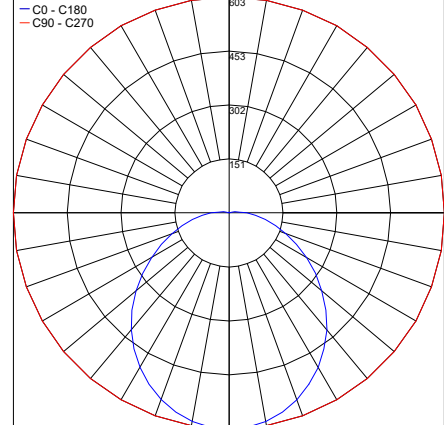
Maximum Candela = 432



PHOTOMETRIC FILENAME : CT19518 (11W - PLAIN & GRILL).IES

16W-PlainGrill

Maximum Candela = 603.4



PHOTOMETRIC FILENAME : CT19519 (16W - PLAIN & GRILL).IES

Job Name/Date:

Fixture Type Designation: