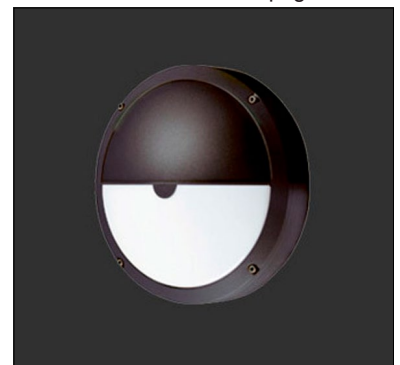


Cobalt is a circular, wall mounted, luminaire with a choice of four cover frame styles, suitable for outdoor installation to illuminate external pathways at schools, hospitals, retail, and other commercial environments. It is available in 3 wattages, 2 standard finishes and 4000K as standard. ADA compliant, ligature-resistant and emergency versions available.

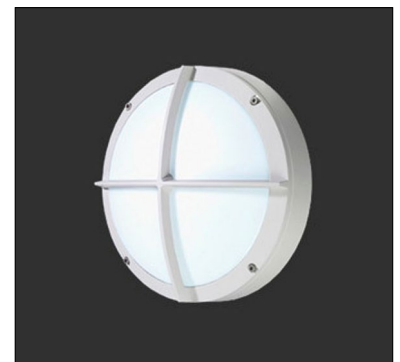


Plain Cover - **All are ADA Compliant**

Fixture Dimensions - See page 2



Hood Cover



Grill Cover



Hood & Grill Cover

## TECHNICAL DATA

<b>Wattage / Input</b>	11W, 15W, 16W
<b>Power Supply</b>	Integral 120-277VAC
<b>Construction</b>	Body/Cover: Die-cast LM2 Aluminum Lens: Fire-retardant Satin Polycarbonate
<b>CCT</b>	4000K
<b>CRI</b>	>80
<b>BUG Rating</b>	B1-U2-G1 (Plain) B0-U3-G2 (Hood / Grill) B1-U2-G1 (Plain / Grill)
<b>Delivered Lumens</b>	1490 lm (11W - Plain) 2070 lm (16W - Plain) 1020 lm (15W - Hood)
<b>Efficacy</b>	135.5 lm/W (11W - Plain) 129.4 lm/W (16W - Plain) 68 lm/W (15W - Hood)
<b>Optics</b>	Diffuse
<b>Finishes</b>	Graphite polyester powder finish standard Silver or White finish on request
<b>LED Source</b>	LUX GUARD LED
<b>Lumen Maintenance</b>	100,000 hrs L80, B10
<b>Fixture Dimensions</b>	Ø13.4" x 4.5"
<b>Fixture Weight</b>	6.6 lbs (Plain or Hood) 7.1 lbs (Plain & Grill or Hood & Grill)
<b>IP Rating</b>	IP66
<b>Impact Resistance</b>	IK10

## ORDERING INFORMATION

Example: CT19515.L.US. **Emergency versions available - use prefix ECT.**

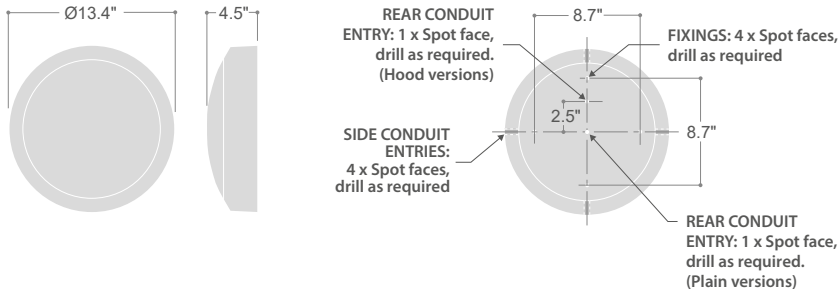
<input type="text"/>	<input type="text" value="L"/>	<input type="text"/>	<input type="text" value="US"/>
<b>Model No.</b>	<b>Circuit</b>	<b>Finish Options</b>	<b>US</b>
CT 19516 (11W - Plain)	L	SV3 - Silver	US
CT 19015 (15W - Hood)		W9 - White	
CT 19517 (16W - Plain)		Graphite - Standard (no code)	
CT 19518 (11W - Plain & Grill)			
CT 19016 (15W - Hood & Grill)			
CT 19519 (16W - Plain & Grill)			

**Emergency Versions available - use prefix ECT**

Job Name/Date:

Fixture Type Designation:

## FIXTURE DIMENSIONS

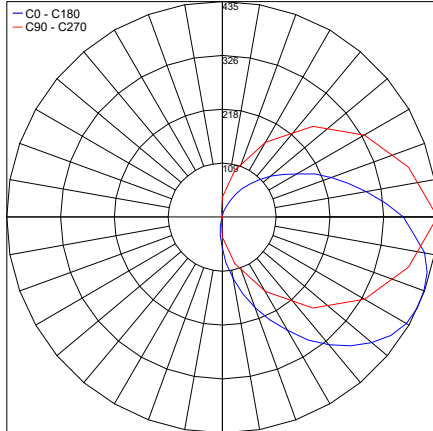


## PHOTOMETRIC DATA

Note all Photometry is 4000K

15W-Plain

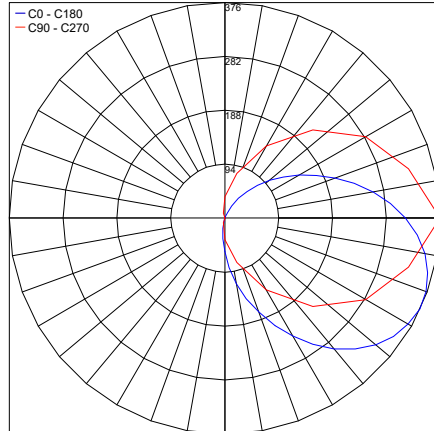
Maximum Candela = 435.3



PHOTOMETRIC FILENAME : CT19015 (15W - HOOD).IES

15W-HoodGrill

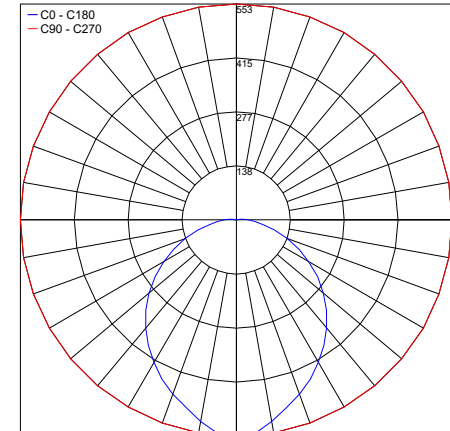
Maximum Candela = 375.5



PHOTOMETRIC FILENAME : CT19016 (15W - HOOD&GRILL).IES

11W-Plain

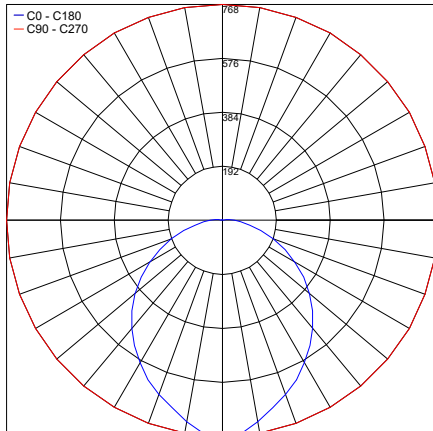
Maximum Candela = 553



PHOTOMETRIC FILENAME : CT19516 (11W - PLAIN).IES

16W-Plain

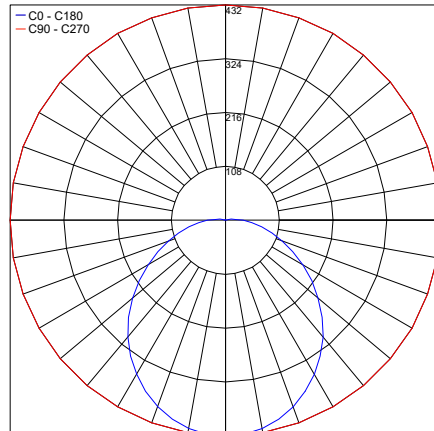
Maximum Candela = 768.2



PHOTOMETRIC FILENAME : CT19517 (16W - PLAIN).IES

11W-PlainGrill

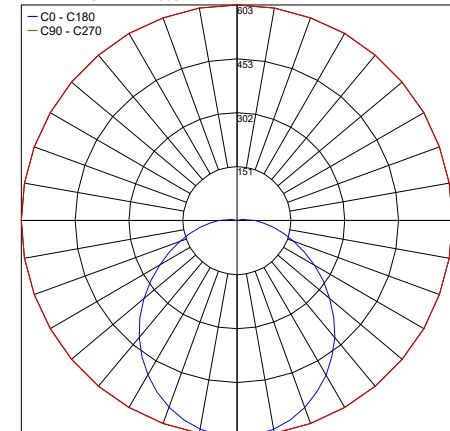
Maximum Candela = 432



PHOTOMETRIC FILENAME : CT19518 (11W - PLAIN & GRILL).IES

16W-PlainGrill

Maximum Candela = 603.4



PHOTOMETRIC FILENAME : CT19519 (16W - PLAIN & GRILL).IES

Job Name/Date:

Fixture Type Designation: