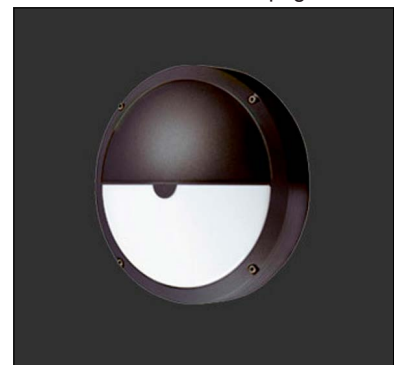


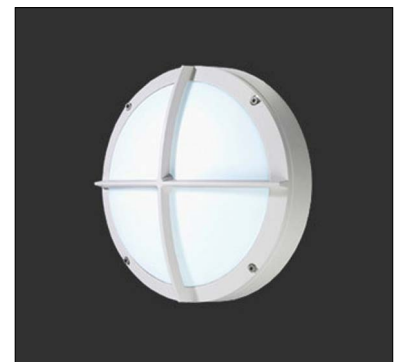
Cobalt is a circular, wall mounted, luminaire with a choice of four cover frame styles, suitable for outdoor installation to illuminate external pathways at schools, hospitals, retail, and other commercial environments. It is available in 3 wattages, 2 standard finishes and 4000K as standard. ADA compliant, ligature-resistant and emergency versions available.



Plain Cover - **All are ADA Compliant**  
Fixture Dimensions - See page 2



Hood Cover



Grill Cover



Hood & Grill Cover

## TECHNICAL DATA

|                           |  |
|---------------------------|--|
| <b>Wattage / Input</b>    | 11W, 15W, 16W  |
| <b>Power Supply</b>       | Integral 120-277VAC  |
| <b>Construction</b>       | Body/Cover: Die-cast LM2 Aluminum<br>Lens: Fire-retardant Satin Polycarbonate  |
| <b>CCT</b>                | 4000K  |
| <b>CRI</b>                | >80  |
| <b>BUG Rating</b>         | B1-U2-G1 (Plain)<br>B1-U2-G1 (Grill)<br>B0-U3-G2 (Hood & Grill)                |
| <b>Delivered Lumens</b>   | 1490 lm (11W - Plain)<br>2070 lm (16W - Plain)<br>1020 lm (15W - Hood)         |
| <b>Efficacy</b>           | 135.5 lm/W (11W - Plain)<br>129.4 lm/W (16W - Plain)<br>68 lm/W (15W - Hood)   |
| <b>Optics</b>             | Diffuse  |
| <b>Finishes</b>           | Graphite polyester powder finish standard<br>Silver or White finish on request |
| <b>LED Source</b>         | LUX GUARD LED  |
| <b>Lumen Maintenance</b>  | 100,000 hrs L80, B10   |
| <b>Fixture Dimensions</b> | Ø13.4" x 4.5"  |
| <b>Fixture Weight</b>     | 6.6 lbs (Plain or Hood)<br>7.1 lbs (Grill or Hood & Grill)                     |
| <b>IP Rating</b>          | IP66   |
| <b>Impact Resistance</b>  | IK10   |

## ORDERING INFORMATION

Example: CT19515.L.US. **Emergency versions available - use prefix ECT.**

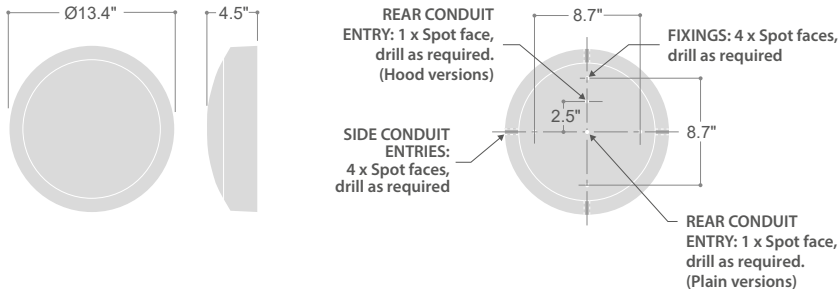
|                               |                                |                                  |                                 |
|-------------------------------|--------------------------------|----------------------------------|---------------------------------|
| <input type="text"/>          | <input type="text" value="L"/> | <input type="text"/>             | <input type="text" value="US"/> |
| <b>Model No.</b>              | <b>Circuit</b>                 | <b>Finish Options</b>            | <b>US</b>                       |
| CT 19015 (15W - Hood)         | L                              | SV3 - Silver                     | US                              |
| CT 19516 (11W - Plain)        |                                | W9 - White                       |                                 |
| CT 19517 (16W - Plain)        |                                | Graphite - Standard<br>(no code) |                                 |
| CT 19518 (11W - Grill)        |                                |                                  |                                 |
| CT 19519 (16W - Grill)        |                                |                                  |                                 |
| CT 19016 (15W - Hood & Grill) |                                |                                  |                                 |

**Emergency Versions available - use prefix ECT**

Job Name/Date:

Fixture Type Designation:

## FIXTURE DIMENSIONS

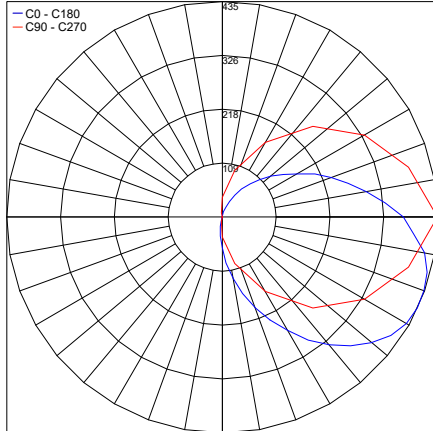


## PHOTOMETRIC DATA

Note all Photometry is 4000K

15W-Plain

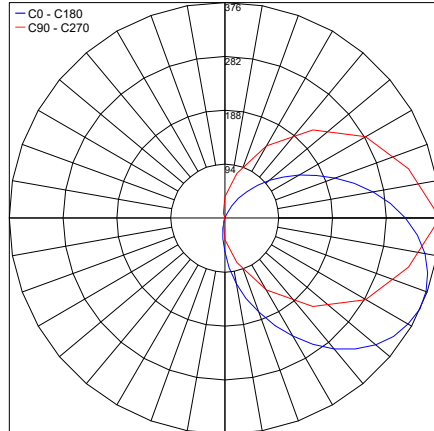
Maximum Candela = 435.3



PHOTOMETRIC FILENAME : CT19015 (15W - HOOD).IES

15W-HoodGrill

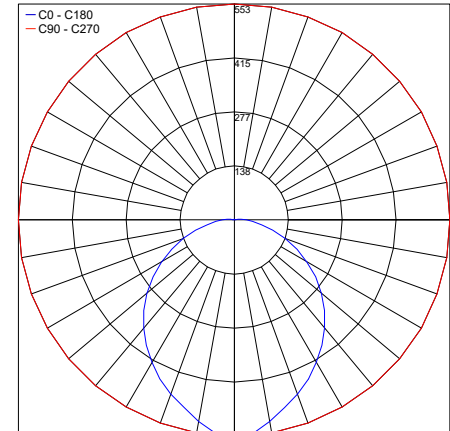
Maximum Candela = 375.5



PHOTOMETRIC FILENAME : CT19016 (15W - HOOD&GRILL).IES

11W-Plain

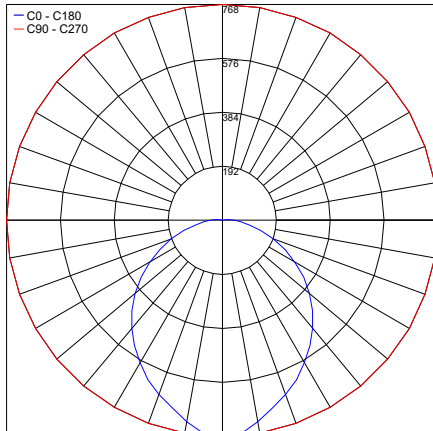
Maximum Candela = 553



PHOTOMETRIC FILENAME : CT19516 (11W - PLAIN).IES

16W-Plain

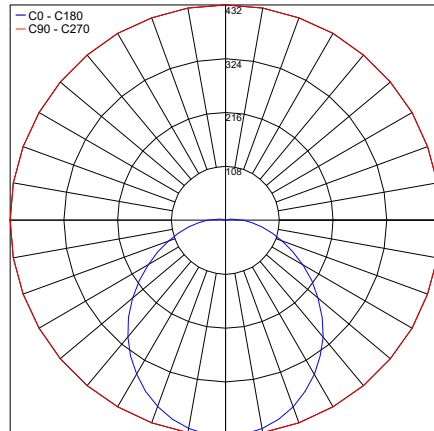
Maximum Candela = 768.2



PHOTOMETRIC FILENAME : CT19517 (16W - PLAIN).IES

11W-PlainGrill

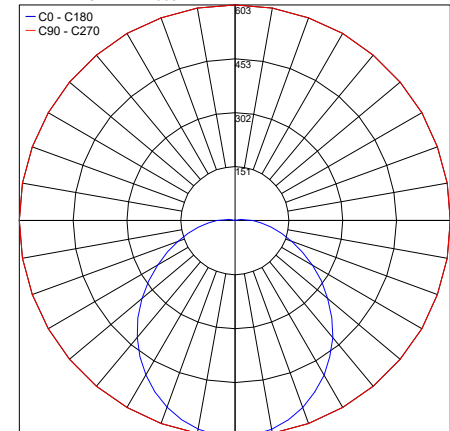
Maximum Candela = 432



PHOTOMETRIC FILENAME : CT19518 (11W - PLAIN&GRILL).IES

16W-PlainGrill

Maximum Candela = 603.4



PHOTOMETRIC FILENAME : CT19519 (16W - PLAIN&GRILL).IES

Job Name/Date:

Fixture Type Designation: