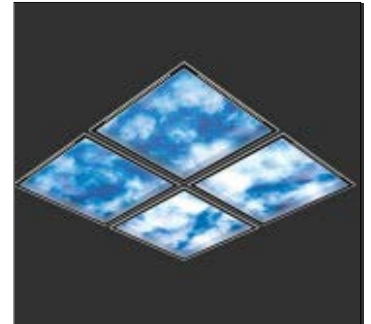




**INSTRUCTIONS PERTAINING TO RISK OF FIRE OR INJURY TO PERSONS. READ ALL INSTRUCTIONS. IMPORTANT SAFETY INSTRUCTIONS. SAVE THESE INSTRUCTIONS.**

**DANGER - RISK OF SHOCK - DISCONNECT POWER BEFORE INSTALLATION! Please read all instructions before installation.**

- Keep these instructions for future reference.
- Must be installed by a qualified electrician in accordance with national and local standards. Designplan is not responsible for fixtures installed without regard to these standards.
- Unauthorized alterations or tampering of product voids warranty.
- The main power connection must be in accordance with local electrical codes.
- Suitable for INDOOR applications.
- DO NOT INSTALL INSULATION WITHIN 3.0" (76 mm) OF ANY PART OF THE LUMINAIRE.

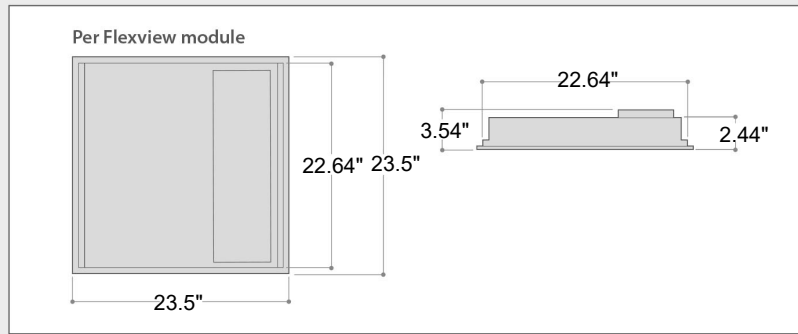


**IP20**

## Maintenance

Scheduled maintenance must be carried out once a year on all lighting devices, regardless of appliance class and type of use. It must include the following operations:

- Periodically clean fixtures to remove dirt from gratings and screw heads.
- Check tightness of screws on various parts of the device.
- Check that all cable glands and cables are intact and tight. Check that the glass or plastic lens is intact, and replace it if broken or damaged.
- The internal components such as the ballast, driver, washers and screws must not show clear signs of oxidation or rust. Clear traces of rust and oxidation will indicate the presence of water inside the device.
- In the case of damage, the components must be replaced by original components or spare parts.

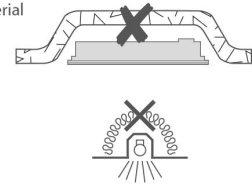


⚠ Non user replaceable light source. ⚠ Handle the frame only, DO NOT touch the panel or LEDs.

Do not stare at operating lamp. May be harmful to the eyes.



Do not cover luminaires with insulation material



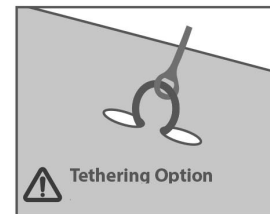
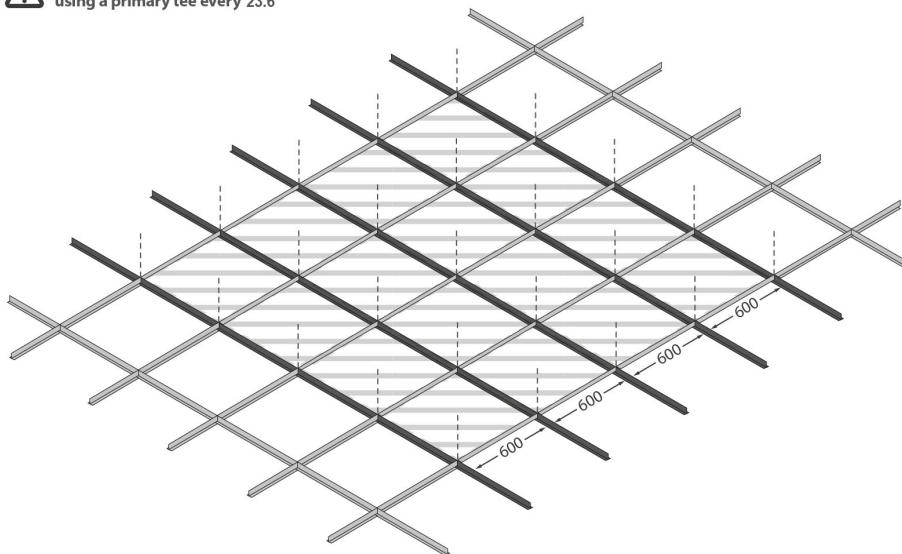
### CEILING SYSTEM



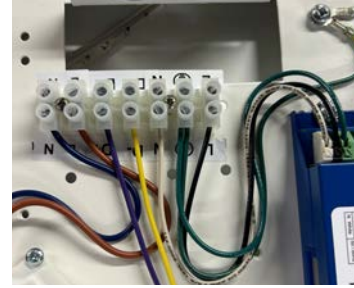
GB - Suspended Ceilings - It is highly recommended that lighting should be independently supported. Please refer to ceiling manufacturer for specific load limits and further guidance.



Thorlux Lighting recommends using a primary tee every 23.6"

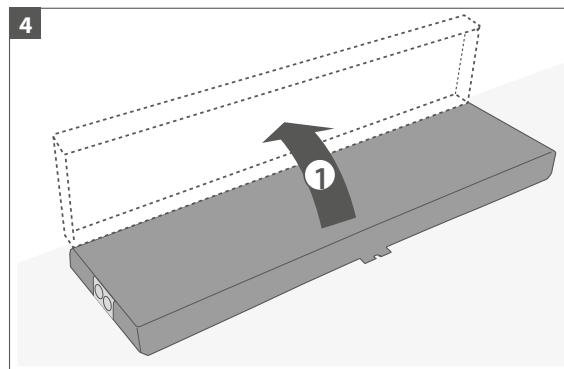
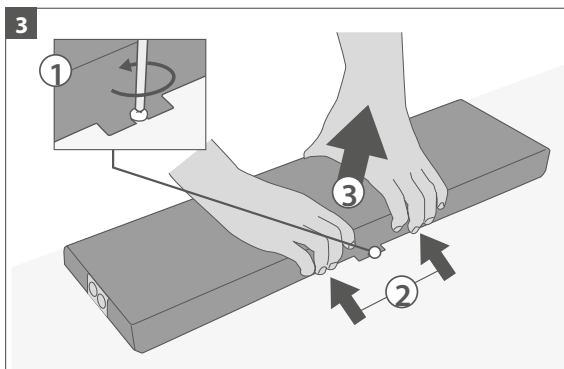
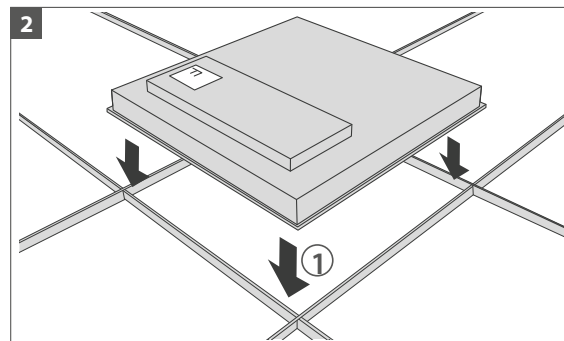
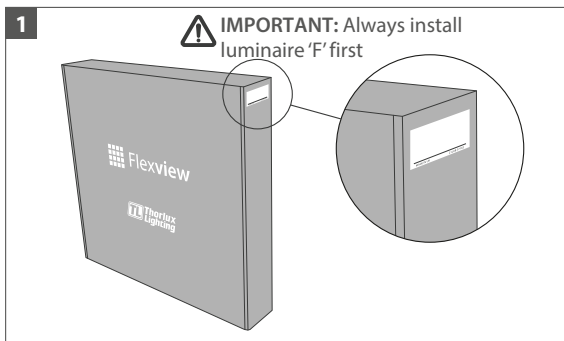


## INSTALLATION & WIRING SEQUENCE



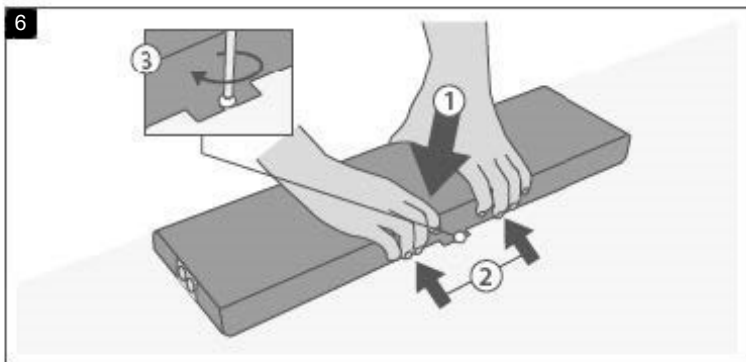
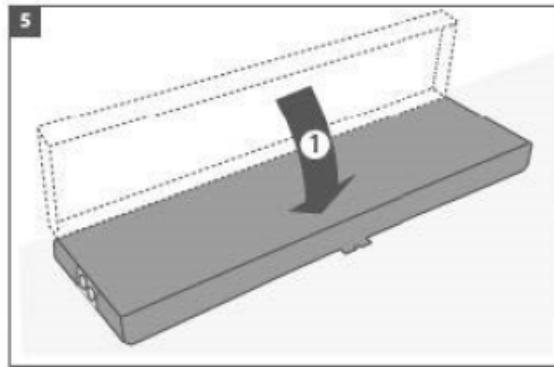
**i** NOTE: Ensure all gear boxes are in the bottom right hand corner as shown in the above arrangements

L- LINE  
N- NEUTRAL  
G- GROUND

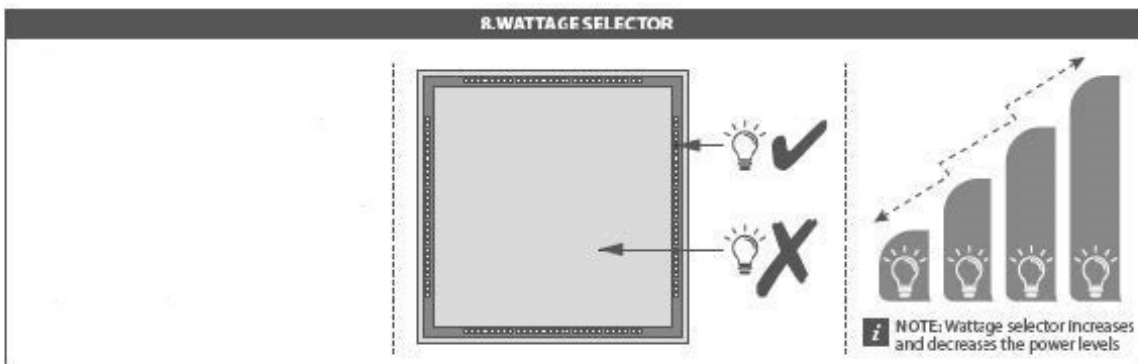


**DO NOT CONNECT POWER UNTIL INSTALLATION IS COMPLETE**

**CABLE GLANDS WHICH PROVIDE STRAIN RELIEF MUST BE USED**



**8. WATTAGE SELECTOR**



**NOTE:** Wattage selector increases and decreases the power levels

**9. CONNECT REMAINING LUMINAIRES (NOT REQUIRED FOR FLEXVIEW ONE)**