

# QUILATERO 1.0

Quilatero is a square, recessed family of driveover-rated uplights suitable for outdoor installation as architectural facade lighting. Quilatero comes in 4 sizes and power ranges, with both fixed and adjustable optics. Quilatero 1.0 is a 4" square with 3.5W, fixed optics, 2 standard finishes and no visible screws.

## TECHNICAL DATA

|                           |   |
|---------------------------|---|
| <b>Wattage</b>            | 3.5W  |
| <b>Power Supply</b>       | Remote 24VDC, not included. See page 2.   |
| <b>Construction</b>       | Body: Thermally Conductive Technopolymer<br>Trim: Stainless Steel AISI 316L<br>Lens: Tempered Extra-clear Glass |
| <b>CCT</b>                | 2200K, 2700K, 3000K, 4000K  |
| <b>CRI</b>                | 80, >90   |
| <b>BUG Rating</b>         | B0-U2-G0 (3000K, CRI90, 35° sharp)<br>B0-U3-G0 (3000K, CRI:80/90)   |
| <b>Delivered Lumens</b>   | 170 lm (3000K, CRI >90, 14°)<br>200 lm (3000K, CRI 80, 14°)   |
| <b>Efficacy</b>           | 48.6 lm/W (3000K, CRI >90, 14°)<br>57.1 lm/W (3000K, CRI 80, 14°)   |
| <b>Optics</b>             | 7°, 10°, 14°, 32°, Sharp 35°, 42°, 12°x45°,<br>Diffuse, Wall Washer   |
| <b>Finishes</b>           | Cor-ten, Stainless Steel<br>(4 Stage Marine Grade Finish)   |
| <b>Fixture Dimensions</b> | 3.94" x 3.94" x 4.37"   |
| <b>Fixture Weight</b>     | 1.21 lbs  |
| <b>LED Source</b>         | 1 Power LED   |
| <b>Lumen Maintenance</b>  | L90, B10 >60,000hrs (Ta 25°C)   |
| <b>Color Consistency</b>  | 2-Step MacAdam  |
| <b>Operating Temp.</b>    | -4°F to +113°F  |
| <b>IP Rating</b>          | IP68 72h, IP66, IP69  |
| <b>Impact Resistance</b>  | IK08  |
| <b>Driveover Capacity</b> | Up to 3307 lbs (kN 20)  |

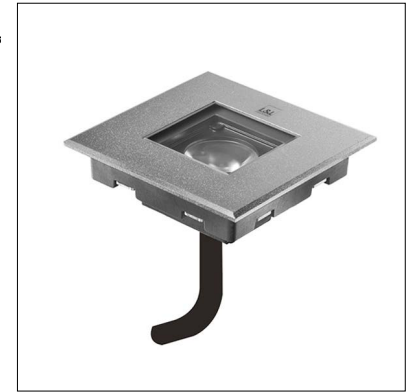
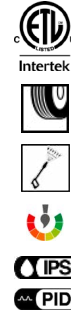
## ORDERING INFORMATION

Example: QL1110100190SI. Accessories ordered separately.

| QL101     |                     |  |  |  |   |
|-----------|---------------------|--|--|--|---|
| Model No. | CRI                 | Optics Accessories   | CCT  | Optics   | Finish  |
| QL101     | 00 - 80<br>01 - >90 | 000 - None<br>010 - Anti-glare Screen<br>001 - Honeycomb Louve<br><i>Honeycomb Louve is NOT compatible with sharp, diffuse and wall washer optics.</i><br><i>Anti-glare Screen NOT compatible with diffuse and wall washer optics.</i> | N0 - 2200K<br>F0 - 2700K<br>50 - 3000K<br>90 - 4000K | V - 7°<br>T - 10°<br>S - 14°<br>M - 32°<br>P - 35° sharp<br>L - 42°<br>W - 12°x45°<br>D - Diffuse<br>A - Wall Washer | T - Cor-ten<br>I - Stainless Steel<br>C - Custom RAL<br>(Consult factory for "C") |

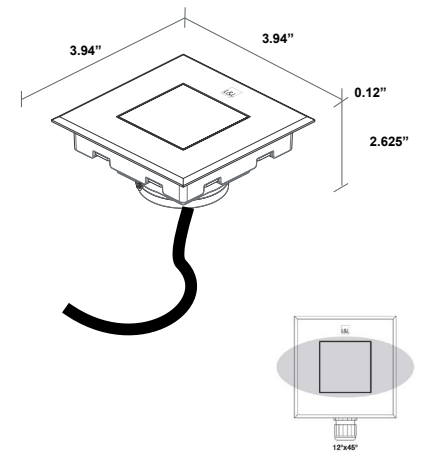
Job Name/Date:

Fixture Type Designation:



**NO VISIBLE SCREWS**

Fixture Dimensions



**OUTER CASING REQUIRED**  
See page 2 for part number

## SUGGESTED POWER SUPPLIES

24VDC

| Part Number               | Description   | Input/Output                       | # of Fixtures |
|---------------------------|---|------------------------------------|---------------|
| <a href="#">PPLT00128</a> | Non-Dim   | 120VAC to 24VDC, 6W, Class 2, IP65 | 1-1           |
| <a href="#">PPLT00155</a> | Non-Dim   | 120-277VAC to 24VDC, 30W, Class 2  | 1-6           |
| <a href="#">PPLT00543</a> | 0-10V Dimming to 15% (-40°C / -40°F cold weather start) | 120-277VAC to 24VDC, 100W, Class 2 | 3-22          |

## Suggested Lutron Compatible

| Part Number               | Option       | Lutron SKU | Dim Range | Description                                   | Input/Output                      | # of Fixtures |
|---------------------------|--------------|------------|-----------|---|-----------------------------------|---------------|
| <a href="#">PPLT00530</a> | L3DAE / L3D0 | L3DA/L3D0  | 100%-1%   | Hi-Lume™ 0.1% EcoSystem™ or 3-Wire LED Driver | 120-277VAC to 24VDC, 96W, Class 2 | 1-21          |

## DRIVERS IN NEMA ENCLOSURE

Remote 24VDC - ELV / TRIAC / 0-10V



PPLT00715

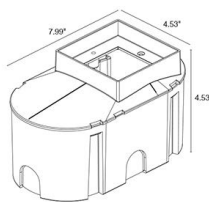
| Part Number               | Description                 | Input/Output                                | # of Fixtures |
|---------------------------|-----------------------------|---|---------------|
| <a href="#">PPLT00715</a> | ELV / TRIAC / 0-10V Dimming | 120-277VAC to 24VDC, 96W, Class 2, WET/DAMP | 1-21          |

For other power supply options consult factory.

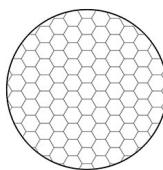
## ACCESSORIES - Installation



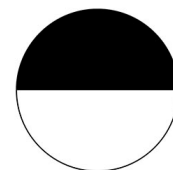
**WCA13**  
Outer Casing (**REQUIRED**)



## Optical



**Honeycomb Louve**  
Built into fixture  
*Not compatible with sharp, diffuse and wall washer optics.*



**Anti-Glare Screen**  
Half transparent and half serigraphed black  
*Not compatible with diffuse and wall washer optics*

## PHOTOMETRIC DATA

See IES Files

Job Name/Date:

Fixture Type Designation: