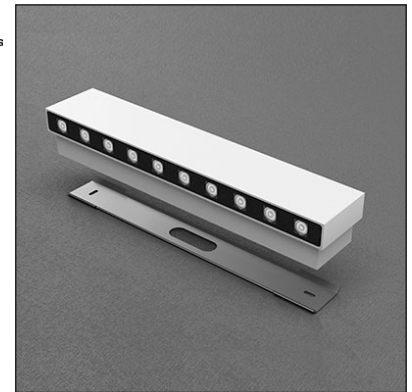


ELEMENT PRO 1 / 1-B



datasheet

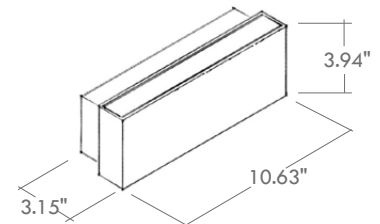
Element Pro is a linear, wall-mounted luminaire, made of aluminum and glass, with single or double emission version. It is available in 3 different lengths, 3 color temperatures and 4 optics options. Element Pro 1 (mono) and 1-B (bi) are 10.6" in length with 5 standard finishes.



TECHNICAL DATA

Wattage / Input	11W - Element Pro 1 Mono (24VDC) 2 x 11W - Element Pro 1-B Bi (24VDC)
Power Supply	Integral 120VAC
Dimming	0-10V Dimming Available
Construction	Body: Anticorodal Aluminum (Anodized), AISI 304 Stainless Steel Lens: Extra Clear, Screen-printed, Tempered Glass Cable Length: 1.64'
CCT	2700K, 3000K, 4000K
BUG Rating	B1-U4-G0
Delivered Lumens	925 lm (3000K - Mono - Element Pro 1) 1850 lm (3000K - Bi - Element Pro 1-B)
Efficacy	84.1 lm/W (3000K)
Optics	4 Standard, See Below
Finishes	5 Standard, See Below
Fixture Dimensions	10.63" l x 3.15" w x 3.94" h
Color Consistency	<3-Step MacAdam
IP Rating	IP66
Impact Resistance	IK09

Fixture Dimensions



ORDERING INFORMATION

Example: LM02.104235.US.03.FL.BP.

Model No.	Finish	Technology	Optic	CCT
LM02.104235.US - Element Pro 1 (Mono)	01 - White	AN - 0-10V	SP - 12°	BC - 2700K
LM02.104238.US - Element Pro 1-B (Bi)	02 - Black	00 - On/Off	MD - 25°	BP - 3000K
	03 - Gray		FL - 40°	BF - 4000K
	04 - Cor-ten		HE - Horizontal Elliptical	
	11 - Anthracite			

Job Name/Date:

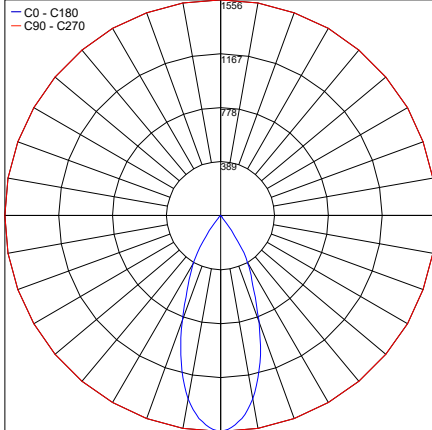
Fixture Type Designation:

PHOTOMETRIC DATA

Note: All photometric data is 3000K

Element Pro 1 40°

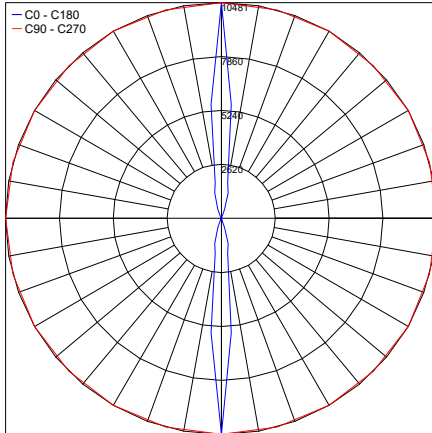
Maximum Candela = 1556



PHOTOMETRIC FILENAME : ELEMENT PRO 1 02.104238.XX.XXX.FL.XX.IES

Element Pro 1-B 12°

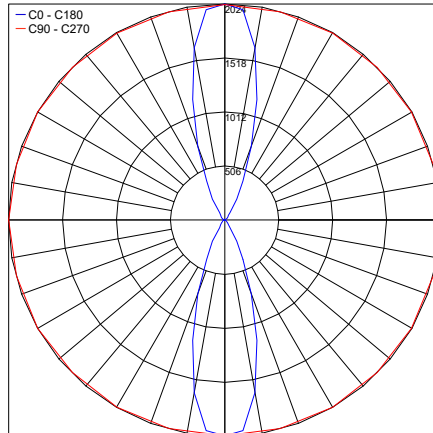
Maximum Candela = 10480.6



PHOTOMETRIC FILENAME : ELEMENT PRO 1-B 02.104238.XX.XXX.SP.XX.IES

Element Pro 1-B 25°

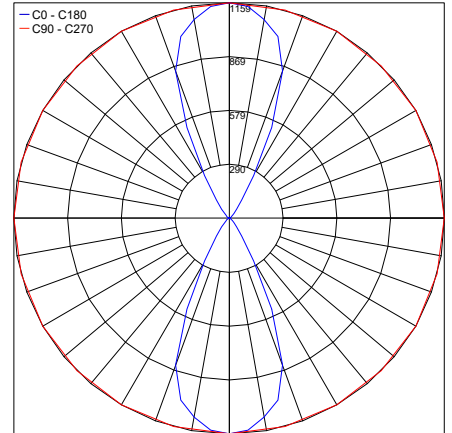
Maximum Candela = 2024.4



PHOTOMETRIC FILENAME : ELEMENT PRO 1-B 02.104238.XX.XXX.MD.XX.IES

Element Pro 1-B 40°

Maximum Candela = 1158.5



PHOTOMETRIC FILENAME : ELEMENT PRO 1-B 02.104238.XX.XXX.FL.XX.IES

Job Name/Date:

Fixture Type Designation: