



INSTRUCTIONS PERTAINING TO RISK OF FIRE OR INJURY TO PERSONS. READ ALL INSTRUCTIONS. IMPORTANT SAFETY INSTRUCTIONS. SAVE THESE INSTRUCTIONS.

DANGER - RISK OF SHOCK - DISCONNECT POWER BEFORE INSTALLATION! Please read all instructions before installation.

- Keep these instructions for future reference.
- Must be installed by a qualified electrician in accordance with national and local standards. Designplan is not responsible for fixtures installed without regard to these standards.
- Unauthorized alterations or tampering of product voids warranty.
- The main power connection must be in accordance with local electrical codes.
- Suitable for OUTDOOR applications.



IP65

ATTENTION: For Wall/Ceiling - It is the contractor's responsibility to caulk around all the edges between the fixture and the mounting surface to satisfy wet label requirements.

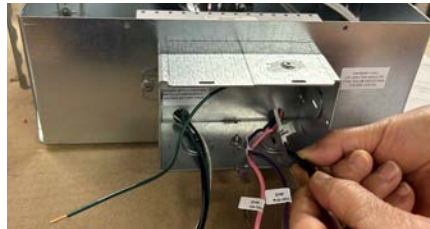
Maintenance

Scheduled maintenance must be carried out once a year on all lighting devices, regardless of appliance class and type of use. It must include the following operations:

- Periodically clean fixtures to remove dirt from gratings and screw heads.
- Check tightness of screws on various parts of the device.
- Check that all cable glands and cables are intact and tight. Check that the glass or plastic lens is intact, and replace it if broken or damaged.
- The internal components such as the ballast, driver, washers and screws must not show clear signs of oxidation or rust. Clear traces of rust and oxidation will indicate the presence of water inside the device.
- In the case of damage, the components must be replaced by original components or spare parts.
- Routinely check the emergency device is still functioning. Each Unit is equipped with a sensor illuminated green when operational and red when not operational. The button can be pressed to power the fixture solely by the battery.

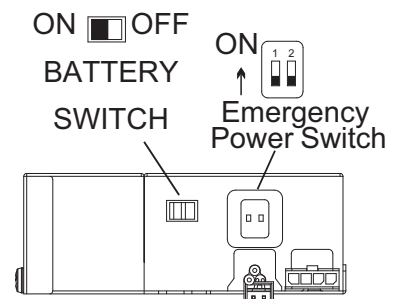
Fixture Installation

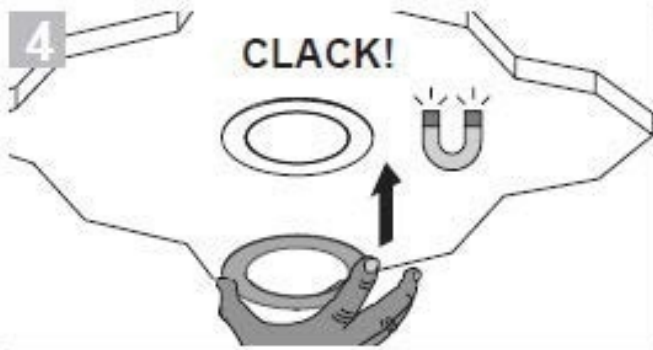
- The lighting fixture comes fully assembled.
- Remove the lens assembly. Carefully twist off and remove the optical cone, and loosen (do not remove!) the three screws securing the LED assembly to the housing. Remove the LED assembly and depress the spring tab holding the driver onto the housing and remove the driver/mounting plate.
- Mount fixture by utilizing the hanger bars on the sides of the body. It is the contractor's responsibility to supply proper mounting based on job condition. The fixture is suitable for a maximum 1 ½" ceiling thickness. An 8 ½" diameter cut out hole is required for the fixture to properly fit through the ceiling.
- Utilize the conduit entries on the sides of the J-box for wiring. Unplug the amp connector. Make supply lead connections in the back extension using the female amp connector. CONNECT GREEN WIRE TO "GROUND", CONNECT WHITE FIXTURE WIRE TO WHITE BUILDING WIRE. CONNECT INCOMING SWITCHED BLACK TO AC BLACK AND CONNECT UNSWITCHED BLACK TO EMERGENCY BLACK.
- CONNECT DIMMING WIRE(S) TO THE 2 POSITION AMP PLUG SUPPLIED. FOR 10V DIMMING APPLICATIONS THE RED IS THE POSITIVE (+) AND THE ORANGE IS NEGATIVE (-). IF DIMMING IS NOT REQUIRED SIMPLY CAP OFF ENDS. Plug amp connector back together.
- Plug amp connector back together, and secure the ballast tray inside the body.
- Replace the LED assembly back onto the three screws loosened in step 2. Twist into position and tighten the screws.
- Activate the battery by flipping the switch on the driver before reinstalling the lens assembly.
- Install the optical cone, driver tray, and replace the lens / trim assembly. Tighten the trim screws using the supplied wrench.
- Assure proper seal between frame and ceiling structure.



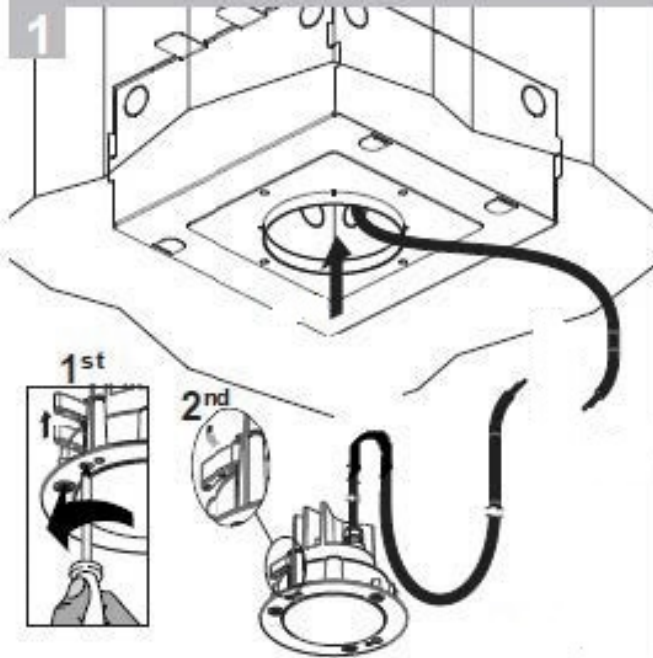
- 1-Emergency Power Switch: 5W or 10W(10W @ ON)
- 2-Self-Diagnostic: Effective @ ON

RIGHT SIDE VIEW





Installation with outer casing



Use a terminal block conforming to EN 60998-2-1 or EN 60998-2-2 with a 3-terminal type, with a nominal voltage of 400V, with a connection capacity of 1.00 to 2.00 mm².

