

Order
and
essential
lines.

beam

design by Landa R&D



beam

Beam is a force that moves the cosmos, a luminaire designed for wall installations with spot, wide and diffused 20 W optics. A fixture with a symmetrical light beam, ideal for outdoor use, purposely designed to provide walkways with adequate light.

Beam has a perfect mechanical structure, it features an external polyester powder coating finish, while the screws used for assembling the different materials are made of stainless steel to avoid damage and danger caused by galvanic corrosion. A product available with opal or transparent screen and different finishes for lighting solutions ideal for every construction need.



designplan® 



beam

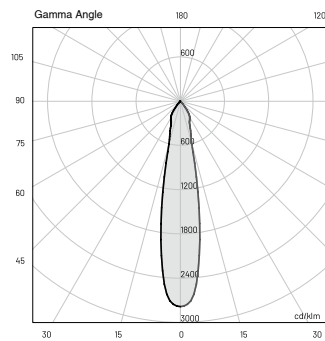
SPOT • WIDE FLOOD

20W

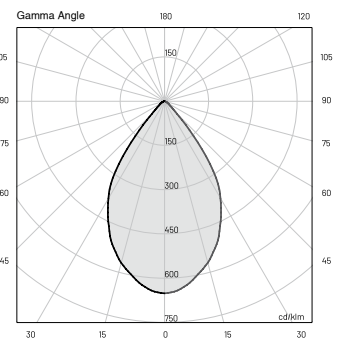


TECHNICAL SPECIFICATIONS

	SPOT	WIDE FLOOD
Source lamp	LED 20W	LED 20W
Total wattage	20W	20W
Voltage	120VAC, 50-60 Hz	120VAC, 50-60 Hz
Control	On/Off	On/Off
Light color	3000K • 4000K • other colors on request	3000K • 4000K • other colors on request
Delivered lumens	1240 lm (1925 lm*) @ 3000K	1240 lm (1925 lm*) @ 3000K
Source lumens	1304 lm (2050 lm) @ 4000K	1300 lm (2050 lm*) @ 4000K
Luminous efficacy	62 lm/W @ 3000K 65 lm/W @ 4000K	62 lm/W @ 3000K 65 lm/W @ 4000K
McADAM steps	3	3
Beam	20°	60°
CRI	> 90	> 90
Life time	L70 > 50.000 h Ta 40°C	L70 > 50.000 h Ta 40°C
IP rating	IP65	IP65
IK rating	IK08	IK08



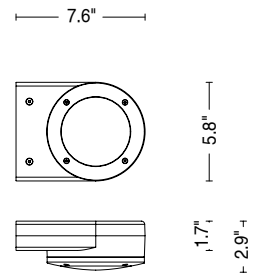
H (ft)	fc		Ø (ft)
	(3000K)	(4000K)	
3.28'	465.7	489.0	1.31'
6.56'	116.4	122.3	2.30'
9.84'	51.7	54.3	3.61'
13.12'	29.1	30.6	4.92'
16.40'	18.7	19.6	5.91'



H (ft)	fc		Ø (ft)
	(3000K)	(4000K)	
3.28'	108.9	114.3	4.27'
6.56'	27.2	28.6	8.53'
9.84'	12.1	12.7	13.12'
13.12'	6.8	7.2	17.39'
16.40'	4.4	4.6	21.65'

MATERIALS

Body	Die-cast aluminum EN47100
Diffuser	Extra clear polycarbonate
Finishing	Polyester powder paint



ORDER CODE

BE 70PAR	BBZ		
		Finishing	<ul style="list-style-type: none"> L Graphite ● M Light grey ● V Oxide ● U White ○
		Light color	<ul style="list-style-type: none"> N 4000K H 3000K
		Beam	<ul style="list-style-type: none"> S Spot W Wide flood
		Example	BE 70PAR S N BBZ L



AVAILABLE ACCESSORIES

Code	Description
0404M004	Single connection IP68

beam

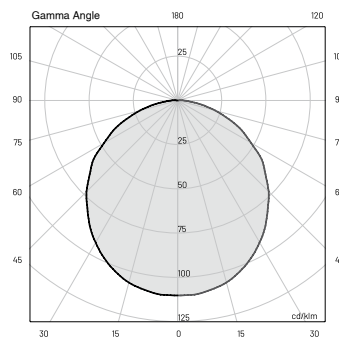
DIFFUSE

20W



TECHNICAL SPECIFICATIONS

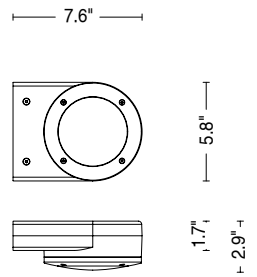
	DIFFUSE
Source lamp	LED 20W
Total wattage	20W
Voltage	120VAC, 50-60 Hz
Control	On/Off
Light color	3000K • 4000K • other colors on request
Delivered lumens	720 lm (1925 lm*) @ 3000K
Source lumens	770 lm (2050 lm) @ 4000K
Luminous efficacy	36 lm/W @ 3000K 38.5 lm/W @ 4000K
McADAM steps	3
Beam	Diffuse
CRI	> 90
Life time	L70 > 50.000 h Ta 40°C
IP rating	IP65
IK rating	IK08



E (FC)			
H (ft)	fc (3000K)	lux (4000 K)	Ø (ft)
3.28'	23.0	24.5	9.84'
6.56'	5.8	6.1	19.69'
9.84'	2.6	2.8	29.53'
13.12'	1.4	1.5	39.37'
16.40'	0.9	1.0	49.21'

MATERIALS

Body	Die-cast aluminum EN47100
Diffuser	Opal polycarbonate
Finishing	Polyester powder paint



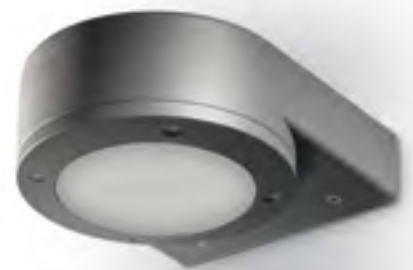
ORDER CODE

BE 71 PAR D _BDZ_

Finishing	L	Graphite	●
	M	Light grey	●
	V	Oxide	●
	U	White	○
Light colour	N	4000 K	
	H	3000 K	

Example

BE 71 PAR D N BDZ L



AVAILABLE ACCESSORIES

Code	Description
0404M004	Single connection IP68



