

Minimalism and 3D.

lako

design by Landa R&D

designplan[®] 

79 Trenton Avenue
Frenchtown, NJ 08825

www.designplan.com

Tel: (908) 996-7710
Fax: (908) 996-7042



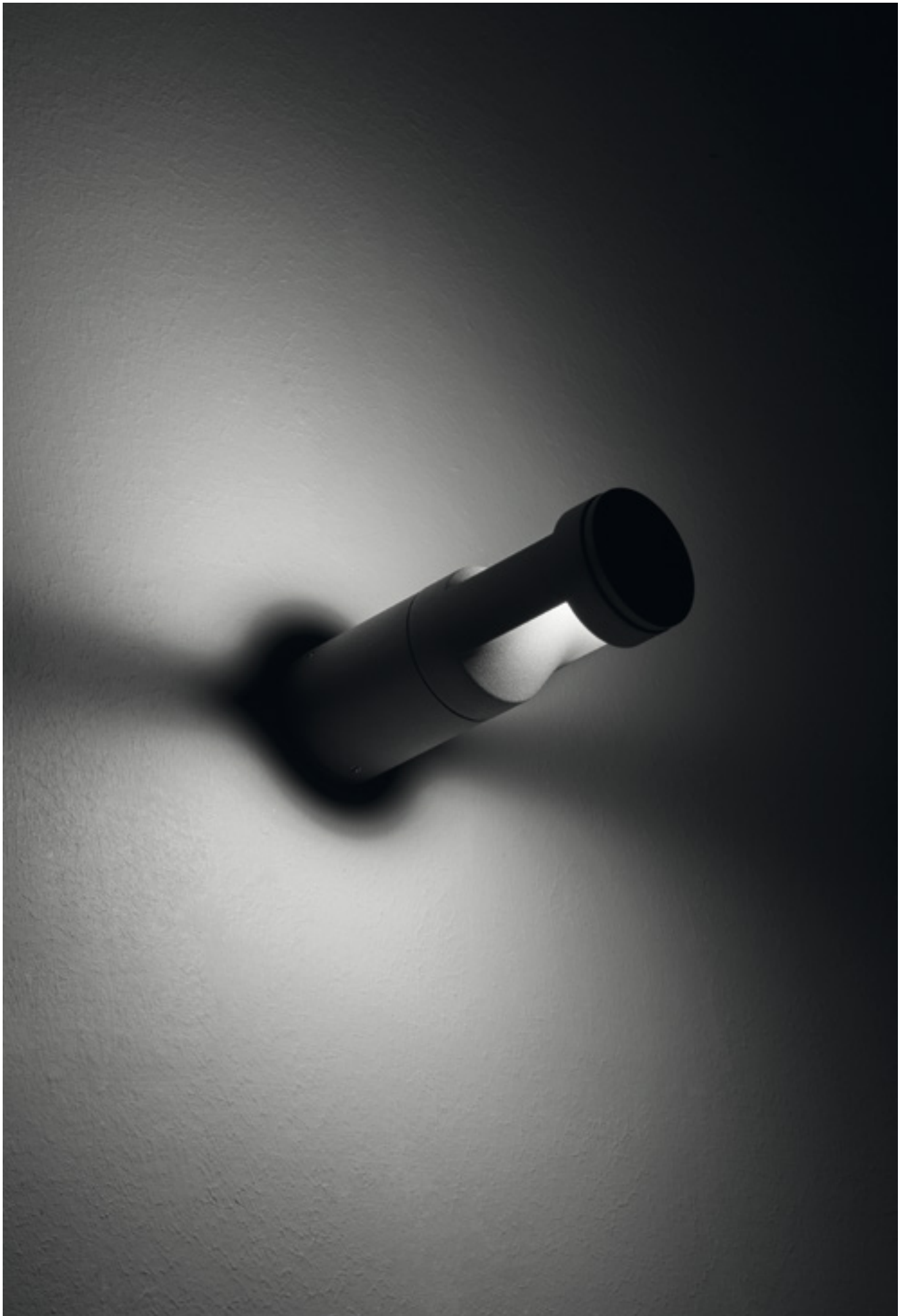
Lako

Lako provides asymmetrical light. A wall-mounted single or double emission luminaire, perfect for functional surface lighting.

The uniform light diffuse by the opal lens, a modern, functional and minimalist design, perfectly integrated into the design context thanks to the great adaptability of the graphite powder paint finish. Technological in its simplicity, minimal in its 3D: the Lako's cylindrical body, made of die-cast and extruded aluminum, is highly resistant to extreme outdoor conditions.

LAKO | BOLLARD also available





lako

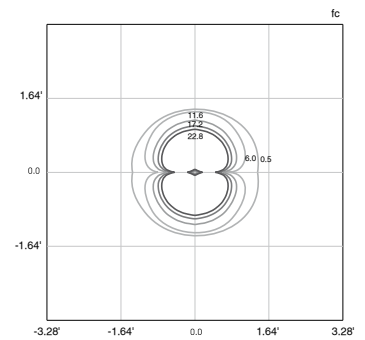
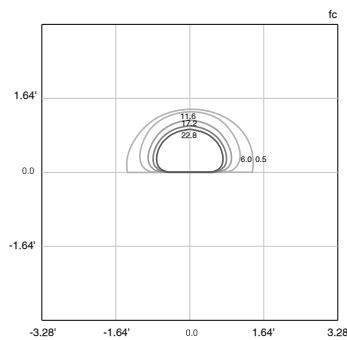
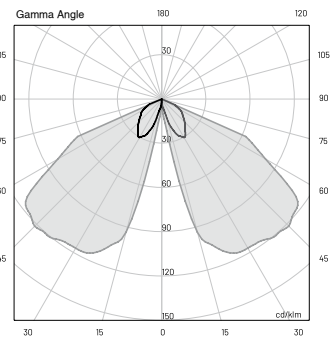
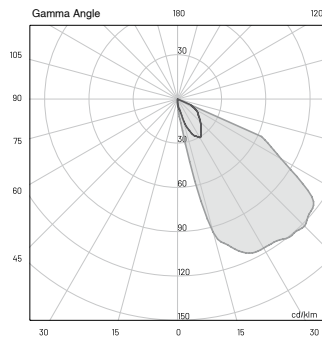
6W

ASYMMETRIC • DOUBLE ASYMMETRIC



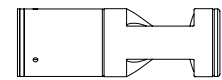
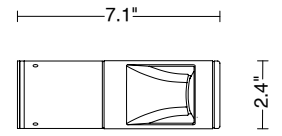
TECHNICAL SPECIFICATIONS

	ASYMMETRIC	DOUBLE ASYMMETRIC
Source lamp	LED 6W	LED 6W
Total wattage	6W	6W
Voltage	400mA, 50-60 Hz	400mA, 50-60 Hz
Control	On/Off	On/Off
Light colour	3000K	3000K
Luminous flux *Source flux	108 lm (600 lm*)	216 lm (600 lm*)
Luminous efficacy	18 lm/W	36 lm/W
McADAM steps	3	3
Beam	Asymmetric	Double Asymmetric
CRI	> 90	> 90
Life time	L70 > 50.000 h Ta 40°C	L70 > 50.000 h Ta 40°C
IP rating	IP65	IP65
IK rating	IK08	IK08



MATERIALS

<i>Body</i>	Die-cast aluminum EN47100 and extruded aluminum EN AW6060
<i>Diffuser</i>	Opal polycarbonate
<i>Finishing</i>	Polyester powder paint



ORDER CODE

LA 2 0 018 _ HB 10 _

<i>Finishing</i>	L Graphite ●
	V Oxide ●
<i>Beam</i>	A Asymmetric
	4 Double Asymmetric
<i>Example</i>	LA 2 0 018 A H B 1 0 L





