

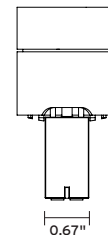
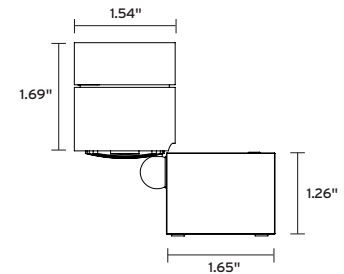
C2-C is an LED spotlight for installation on a magnetic track, suitable for showcase lighting in museum and retail settings. It is 180° rotatable, 90° swiveling, and available with a single or triple lens, 5 color temperatures and 3 standard finishes. C2-C is the only 24V track head and cannot be combined with other fixtures on the track. Dimming via the Casambi app.



TECHNICAL DATA

Wattage / Input	4.5W (single lens - 24VDC) 4.5W (triple lens - 24VDC)
Power Supply	Remote, not included. See page 2.
Dimming	External via Potentiometer (incl.) Individually controlled by Casambi App
Construction	Body: Anodized Aluminum
CCT	2700K, 3000K, 3500K, 4000K, 5700K
CRI	>90
Delivered Lumens	260 lm (single lens, 3000K, 25°) 310 lm (triple lens, 3000K, 25°)
Efficacy	58 lm/W (single lens, 3000K, 25°) 69 lm/W (triple lens, 3000K, 25°)
Optics	Single Lens: 14°, 25°, 60°, 40°+15° Triple Lens: 18°, 25°, 32°, 67°
Finishes	3 Standard, See Below
Fixture Dimensions	Ø1.54" x 3.46"
Lumen Maintenance	L80, B10 >50,000hrs
IP Rating	IP20

Fixture Dimensions



Single or Triple Lens Version

ORDERING INFORMATION

Example: C2-C-40-25-G. Accessories / Power Supplies ordered separately.

C2-C	-		-		-	
------	---	--	---	--	---	--

Model No.	CCT	Optics	Finish
C2-C	27 - 2700K	14 - 14° single lens	B - Anodized Black
	30 - 3000K	25 - 25° single lens	S - Silver
	35 - 3500K	60 - 60° single lens	G - Gold
	40 - 4000K	40 - 40°+15° single lens	C - Custom RAL (consult factory for "C")
	57 - 5700K	T8 - 18° triple lens	
		T5 - 25° triple lens	
		T2 - 32° triple lens	
		T7 - 67° triple lens	

Job Name/Date:

Fixture Type Designation:

ACCESSORIES



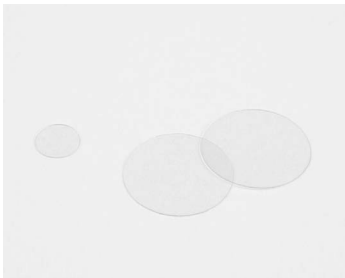
Honeycomb Grid



Anti-Glare Tube



Inclined Tube



Light Diffusion Foil



Barn Door

SUGGESTED POWER SUPPLIES

24VDC

Part Number	Description	Input/Output	# of Fixtures
PPLT00149	Non-Dim	120VAC to 24VDC, 10W, Class 2, IP65	1-1
PPLT00632	0-10V Dimming (Dim to Off)	120-277VAC to 24VDC, 12W, Class 2, DAMP	1-2
PPLT00680	ELV / TRIAC & 0-10V dimming (100 to 0%)	120-277VAC to 24VDC, 20W, Class 2, IP66	1-3
PPLT00157	Non-Dim	120VAC to 24VDC, 60W, Class 2	1-10
PPLT00627	ELV / TRIAC & 0-10V dimming (100 to 0%)	120-277VAC to 24VDC, 96W, Class 2, IP67	1-17
PPLT00543	0-10V Dimming to 15% (-40°C / -40°F cold weather start)	120-277VAC to 24VDC, 100W, Class 2	2-17

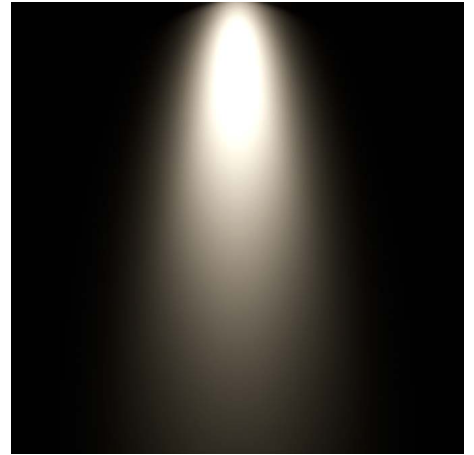
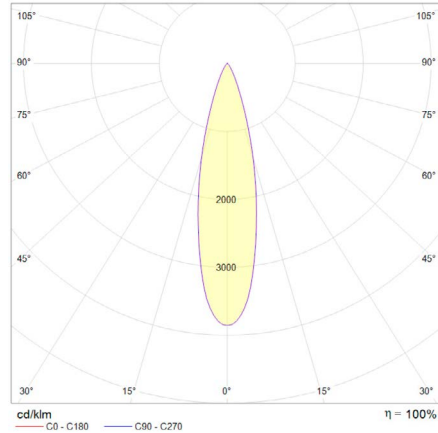
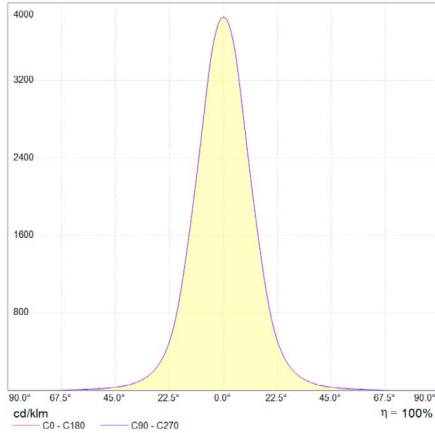
For other power supply options consult factory.

Job Name/Date:

Fixture Type Designation:

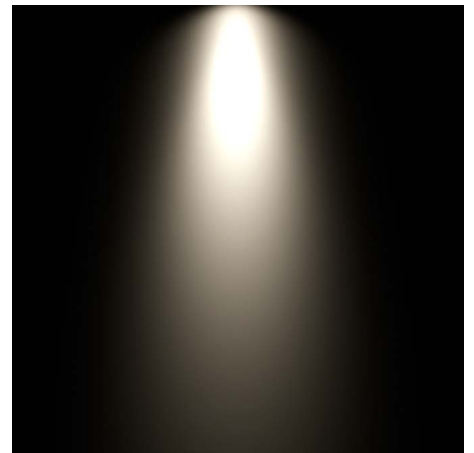
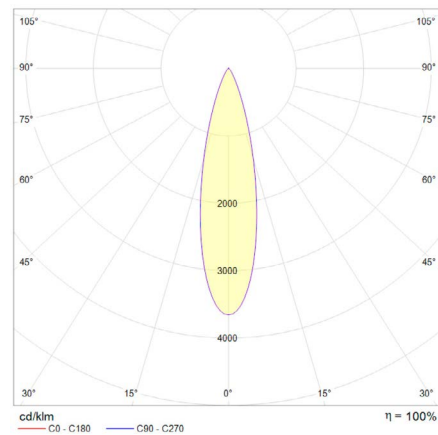
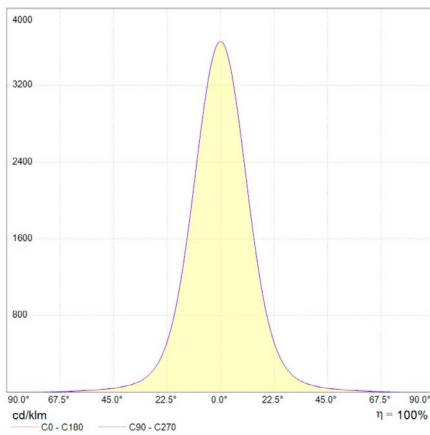
PHOTOMETRIC DATA - Single Lens

for light color 3000K | standard lens 25° | CRI typ. 97, R9 > 90, R12 > 90 | color variation ≤ 3 SDCM



PHOTOMETRIC DATA - Triple Lens

for light color 3000K | standard lens 25° | CRI typ. 97, R9 > 90, R12 > 90 | color variation ≤ 3 SDCM



Job Name/Date:

Fixture Type Designation: